



[Go to Product page](#)

Datasheet for ABIN7162885  
**anti-PCM1 antibody (AA 1-260)**

2 Images

Overview

Quantity:	100 µL
Target:	PCM1
Binding Specificity:	AA 1-260
Reactivity:	Human
Host:	Rabbit
Clonality:	Polyclonal
Conjugate:	This PCM1 antibody is un-conjugated
Application:	Immunohistochemistry (IHC), ELISA

Product Details

Immunogen:	Recombinant Human Pericentriolar material 1 protein (1-260AA)
Isotype:	IgG
Cross-Reactivity:	Human
Purification:	Antigen Affinity Purified

Target Details

Target:	PCM1
Alternative Name:	PCM1 ( <a href="#">PCM1 Products</a> )
Background:	Background: Required for centrosome assembly and function. Essential for the correct localization of several centrosomal proteins including CEP250, CETN3, PCNT and NEK2.

## Target Details

---

Required to anchor microtubules to the centrosome. Involved in the biogenesis of cilia.

Aliases: hPCM-1 antibody, PCM-1 antibody, pcm1 antibody, PCM1\_HUMAN antibody, Pericentriolar material 1 antibody, Pericentriolar material 1 protein antibody, PTC4 antibody

UniProt: [Q15154](#)

Pathways: [Stem Cell Maintenance](#), [M Phase](#), [Maintenance of Protein Location](#)

## Application Details

---

Application Notes: Recommended dilution: IHC:1:20-1:200,

Restrictions: For Research Use only

## Handling

---

Format: Liquid

Buffer: PBS with 0.02 % sodium azide, 50 % glycerol, pH 7.3.

Preservative: Sodium azide

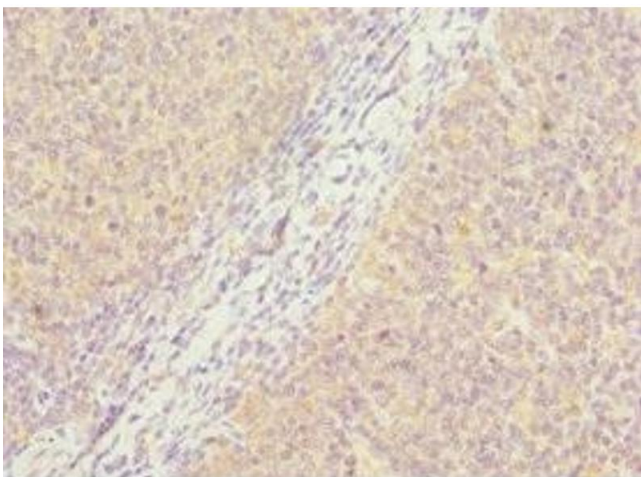
Precaution of Use: This product contains Sodium azide: a POISONOUS AND HAZARDOUS SUBSTANCE which should be handled by trained staff only.

Storage: -20 °C,-80 °C

Storage Comment: Upon receipt, store at -20°C or -80°C. Avoid repeated freeze.

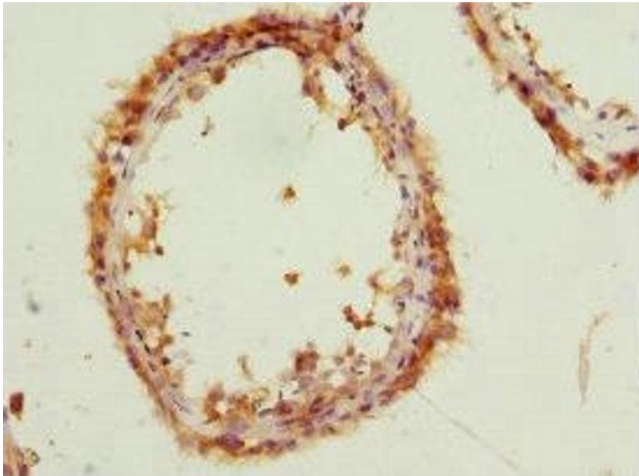
## Images

---



### Immunohistochemistry

**Image 1.** Immunohistochemistry of paraffin-embedded human tonsil tissue using ABIN7162885 at dilution of 1:100



### Immunohistochemistry

**Image 2.** Immunohistochemistry of paraffin-embedded human testis tissue using ABIN7162885 at dilution of 1:100