



[Go to Product page](#)

Datasheet for ABIN7162891
anti-PLIN3 antibody (AA 192-324)

3 Images

Overview

Quantity:	100 µg
Target:	PLIN3
Binding Specificity:	AA 192-324
Reactivity:	Human
Host:	Rabbit
Clonality:	Polyclonal
Conjugate:	This PLIN3 antibody is un-conjugated
Application:	Western Blotting (WB), ELISA, Immunohistochemistry (IHC), Immunofluorescence (IF)

Product Details

Immunogen:	Recombinant Human Perilipin-3 protein (192-324AA)
Isotype:	IgG
Cross-Reactivity:	Human
Purification:	>95%, Protein G purified

Target Details

Target:	PLIN3
Alternative Name:	PLIN3 (PLIN3 Products)
Background:	Background: Required for the transport of mannose 6-phosphate receptors (MPR) from endosomes to the trans-Golgi network.

Target Details

Aliases: 47 kDa mannose 6-phosphate receptor-binding protein antibody, 47 kDa MPR binding protein antibody, 47 kDa MPR-binding protein antibody, Cargo selection protein TIP47 antibody, M6PRBP 1 antibody, M6PRBP1 antibody, Mannose 6 phosphate receptor binding protein 1 antibody, Mannose-6-phosphate receptor-binding protein 1 antibody, MGC11117 antibody, MGC2012 antibody, MPR binding protein 47 kDa antibody, Perilipin 3 antibody, Perilipin-3 antibody, Perilipin3 antibody, Placental protein 17 antibody, PLIN3 antibody, PLIN3_HUMAN antibody, pp17 antibody, Tail interacting protein 47 kD antibody, TIP47 antibody

UniProt: [O60664](#)

Application Details

Application Notes: Recommended dilution: WB:1:2000-1:10000, IHC:1:20-1:200, IF:1:50-1:200,

Restrictions: For Research Use only

Handling

Format: Liquid

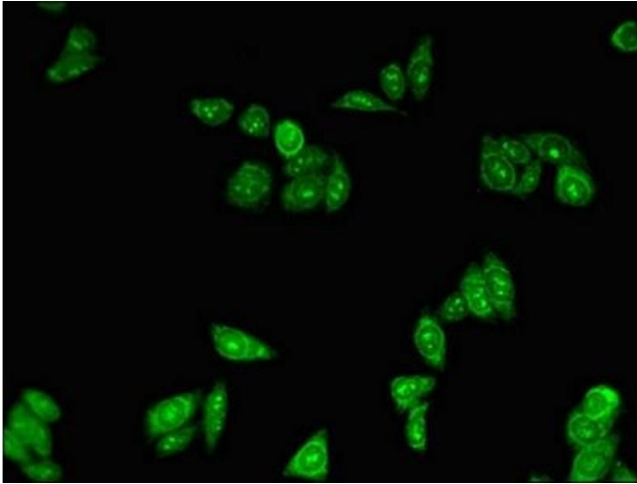
Buffer: Preservative: 0.03 % Proclin 300
Constituents: 50 % Glycerol, 0.01M PBS, PH 7.4

Preservative: ProClin

Precaution of Use: This product contains ProClin: a POISONOUS AND HAZARDOUS SUBSTANCE which should be handled by trained staff only.

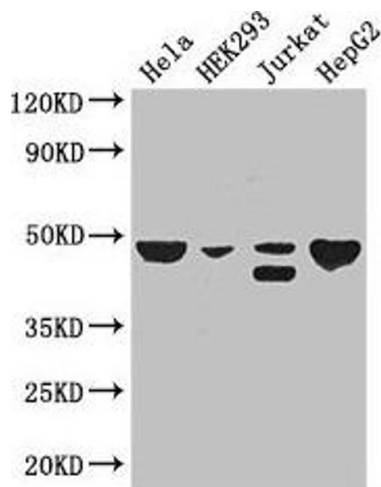
Storage: -20 °C,-80 °C

Storage Comment: Upon receipt, store at -20°C or -80°C. Avoid repeated freeze.



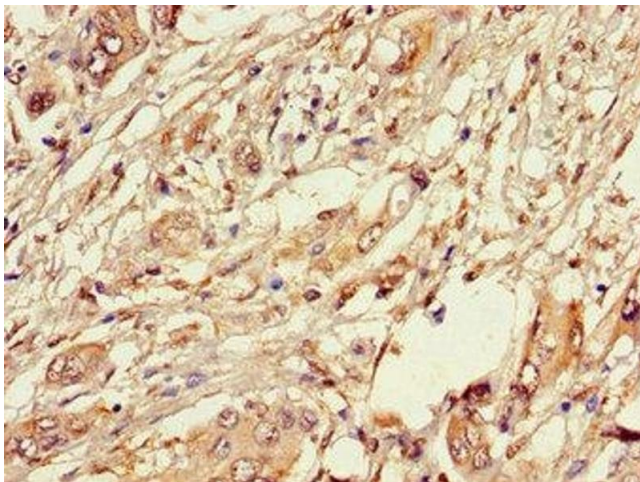
Immunofluorescence

Image 1. Immunofluorescent analysis of HepG2 cells using ABIN7162891 at dilution of 1:100 and Alexa Fluor 488-conjugated AffiniPure Goat Anti-Rabbit IgG(H+L)



Western Blotting

Image 2. Western Blot Positive WB detected in: Hela whole cell lysate, HEK293 whole cell lysate, Jurkat whole cell lysate, HepG2 whole cell lysate All lanes: PLIN3 antibody at 3 µg/mL Secondary Goat polyclonal to rabbit IgG at 1/50000 dilution Predicted band size: 48, 29, 47, 46 kDa Observed band size: 48, 46 kDa



Immunohistochemistry

Image 3. Immunohistochemistry of paraffin-embedded human pancreatic cancer using ABIN7162891 at dilution of 1:100