



[Go to Product page](#)

Datasheet for ABIN7162928

anti-Peripherin antibody (AA 1-260)

2 Images

Overview

Quantity:	100 µL
Target:	Peripherin (PRPH)
Binding Specificity:	AA 1-260
Reactivity:	Human
Host:	Rabbit
Clonality:	Polyclonal
Conjugate:	This Peripherin antibody is un-conjugated
Application:	Immunohistochemistry (IHC), ELISA

Product Details

Immunogen:	Recombinant Human Peripherin protein (1-260AA)
Isotype:	IgG
Cross-Reactivity:	Human
Purification:	Antigen Affinity Purified

Target Details

Target:	Peripherin (PRPH)
Alternative Name:	PRPH (PRPH Products)
Background:	Background: Class-III neuronal intermediate filament protein. Aliases: NEF 4 antibody, NEF4 antibody, Neurofilament 4 (57kD) antibody, Neurofilament 4

Target Details

antibody, Perf antibody, PERI_HUMAN antibody, Peripherin antibody, PRPH 1 antibody, prph antibody, PRPH1 antibody

UniProt: [P41219](#)

Application Details

Application Notes: Recommended dilution: IHC:1:20-1:200,

Restrictions: For Research Use only

Handling

Format: Liquid

Buffer: PBS with 0.02 % sodium azide, 50 % glycerol, pH 7.3.

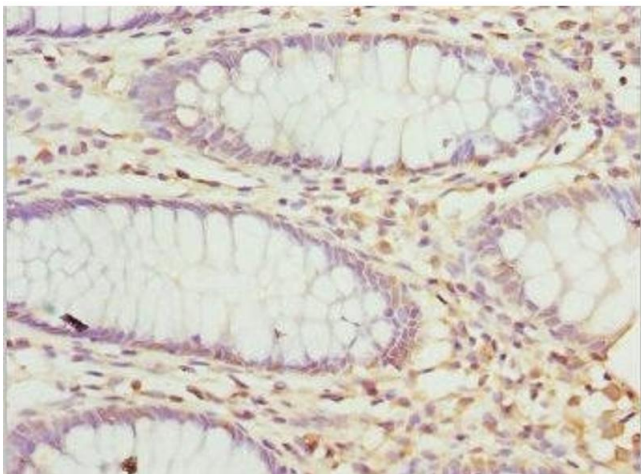
Preservative: Sodium azide

Precaution of Use: This product contains Sodium azide: a POISONOUS AND HAZARDOUS SUBSTANCE which should be handled by trained staff only.

Storage: -20 °C,-80 °C

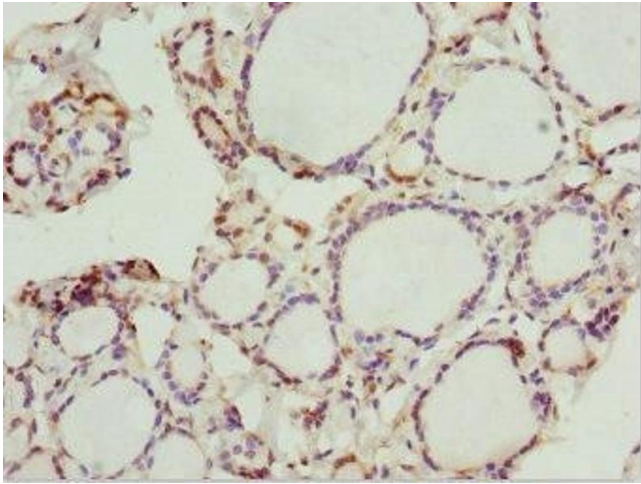
Storage Comment: Upon receipt, store at -20°C or -80°C. Avoid repeated freeze.

Images



Immunohistochemistry

Image 1. Immunohistochemistry of paraffin-embedded human colon cancer using ABIN7162928 at dilution of 1:100



Immunohistochemistry

Image 2. Immunohistochemistry of paraffin-embedded human thyroid tissue using ABIN7162928 at dilution of 1:100