

Datasheet for ABIN7163017  
**anti-ETHE1 antibody (AA 8-254)**[Go to Product page](#)

## 2 Images

## Overview

Quantity:	100 µg
Target:	ETHE1
Binding Specificity:	AA 8-254
Reactivity:	Human
Host:	Rabbit
Clonality:	Polyclonal
Conjugate:	This ETHE1 antibody is un-conjugated
Application:	Western Blotting (WB), ELISA, Immunohistochemistry (IHC)

## Product Details

Immunogen:	Recombinant Human Persulfide dioxygenase ETHE1, mitochondrial protein (8-254AA)
Isotype:	IgG
Cross-Reactivity:	Human, Mouse
Purification:	>95%, Protein G purified

## Target Details

Target:	ETHE1
Alternative Name:	ETHE1 ( <a href="#">ETHE1 Products</a> )
Background:	Background: Sulfur dioxygenase that plays an essential role in hydrogen sulfide catabolism in the mitochondrial matrix. Hydrogen sulfide (H <sub>2</sub> S) is first oxidized by SQRDL, giving rise to

## Target Details

cysteine persulfide residues. ETHE1 consumes molecular oxygen to catalyze the oxidation of the persulfide, once it has been transferred to a thiophilic acceptor, such as glutathione (R-SSH). Plays an important role in metabolic homeostasis in mitochondria by metabolizing hydrogen sulfide and preventing the accumulation of supraphysiological H<sub>2</sub>S levels that have toxic effects, due to the inhibition of cytochrome c oxidase. First described as a protein that can shuttle between the nucleus and the cytoplasm and suppress p53-induced apoptosis by sequestering the transcription factor RELA/NFKB3 in the cytoplasm and preventing its accumulation in the nucleus (PubMed:12398897).

Aliases: Ethe1 antibody, ETHE1 protein, mitochondrial precursor antibody, ETHE1\_HUMAN antibody, ethylmalonic encephalopathy 1 antibody, Ethylmalonic encephalopathy protein 1 antibody, hepatoma subtracted clone one antibody, Hepatoma subtracted clone one protein antibody, HSCO antibody, mitochondrial antibody, Protein ETHE1 antibody, Protein ETHE1 mitochondrial antibody, YF13H12 antibody

UniProt: [O95571](#)

## Application Details

Application Notes: Recommended dilution: WB:1:500-1:2000, IHC:1:20-1:200,

Restrictions: For Research Use only

## Handling

Format: Liquid

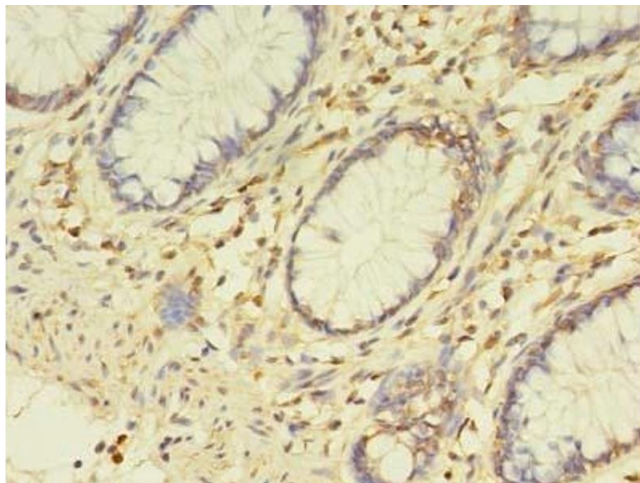
Buffer: Preservative: 0.03 % Proclin 300  
Constituents: 50 % Glycerol, 0.01M PBS, PH 7.4

Preservative: ProClin

Precaution of Use: This product contains ProClin: a POISONOUS AND HAZARDOUS SUBSTANCE which should be handled by trained staff only.

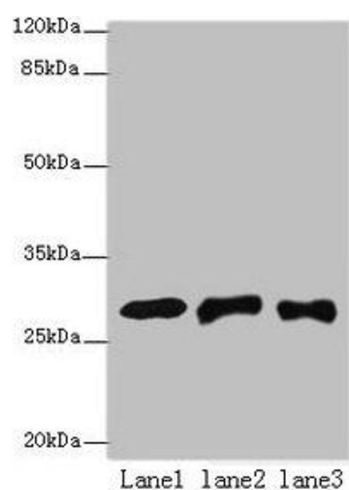
Storage: -20 °C,-80 °C

Storage Comment: Upon receipt, store at -20°C or -80°C. Avoid repeated freeze.



#### Immunohistochemistry

**Image 1.** Immunohistochemistry of paraffin-embedded human colon cancer using ABIN7163017 at dilution of 1:100



#### Western Blotting

**Image 2.** Western blot All lanes: ETHE1 antibody at 8 µg/mL  
 Lane 1: Mouse liver tissue Lane 2: HepG2 whole cell lysate  
 Lane 3: Hela whole cell lysate Secondary Goat polyclonal to rabbit IgG at 1/10000 dilution Predicted band size: 28 kDa  
 Observed band size: 28 kDa