

Datasheet for ABIN7163038  
**anti-BFSP2 antibody (AA 11-110)**[Go to Product page](#)

## 3 Images

## Overview

Quantity:	100 µg
Target:	BFSP2
Binding Specificity:	AA 11-110
Reactivity:	Human
Host:	Rabbit
Clonality:	Polyclonal
Conjugate:	This BFSP2 antibody is un-conjugated
Application:	Western Blotting (WB), Immunohistochemistry (IHC), ELISA, Immunofluorescence (IF)

## Product Details

Immunogen:	Recombinant Human Phakinin protein (11-110AA)
Isotype:	IgG
Cross-Reactivity:	Human
Purification:	>95%, Protein G purified

## Target Details

Target:	BFSP2
Alternative Name:	BFSP2 ( <a href="#">BFSP2 Products</a> )
Background:	Background: Involved in stabilization of lens fiber cell cytoskeleton. Aliases: BFSP2Phakinin antibody, 49 kDa cytoskeletal protein antibody, Beaded filament

## Target Details

structural protein 2 antibody, Lens fiber cell beaded filament protein CP 47 antibody, CP47 antibody, Lens fiber cell beaded filament protein CP 49 antibody, CP49 antibody, Lens intermediate filament-like light antibody, LIFL-L antibody

UniProt: [Q13515](#)

## Application Details

Application Notes: Recommended dilution: WB:1:500-1:5000, IHC:1:200-1:500, IF:1:50-1:200,

Restrictions: For Research Use only

## Handling

Format: Liquid

Buffer: Preservative: 0.03 % Proclin 300  
Constituents: 50 % Glycerol, 0.01M PBS, pH 7.4

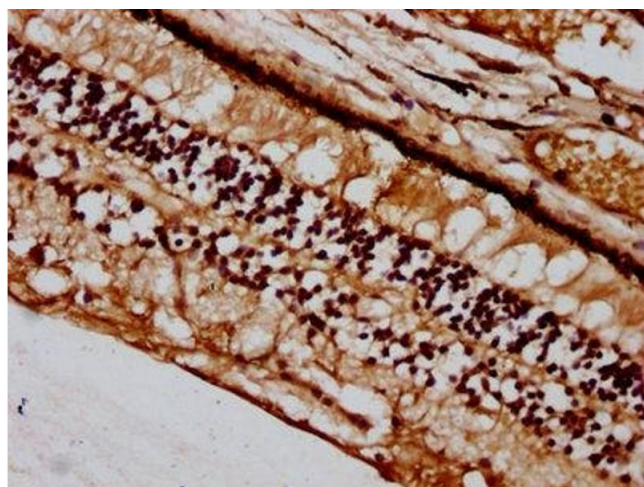
Preservative: ProClin

Precaution of Use: This product contains ProClin: a POISONOUS AND HAZARDOUS SUBSTANCE which should be handled by trained staff only.

Storage: -20 °C,-80 °C

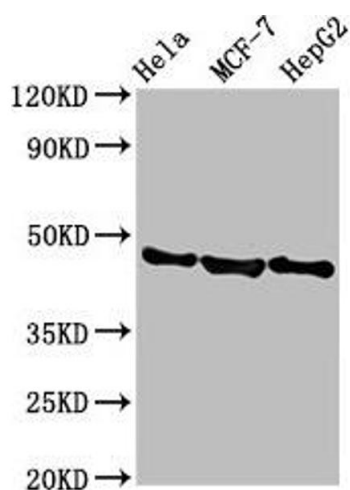
Storage Comment: Upon receipt, store at -20°C or -80°C. Avoid repeated freeze.

## Images



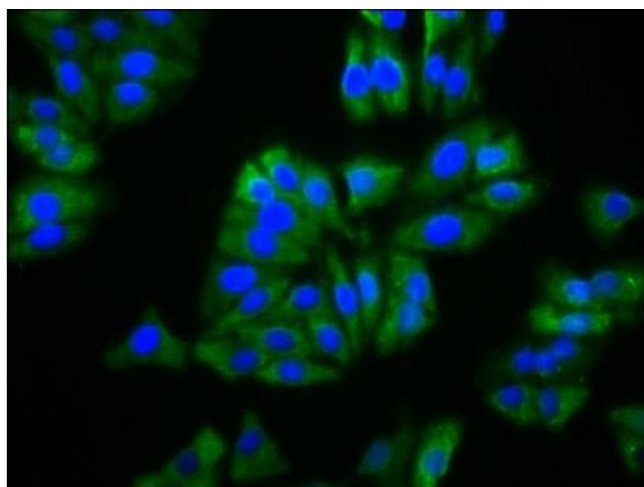
### Immunohistochemistry

**Image 1.** IHC image of ABIN7163038 diluted at 1:400 and staining in paraffin-embedded human eye tissue performed on a Leica Bond™ system. After dewaxing and hydration, antigen retrieval was mediated by high pressure in a citrate buffer (pH 6.0). Section was blocked with 10% normal goat serum 30min at RT. Then primary antibody (1% BSA) was incubated at 4°C overnight. The primary is detected by a biotinylated secondary antibody and visualized using an HRP conjugated SP system.



### Western Blotting

**Image 2.** Western Blot Positive WB detected in: HeLa whole cell lysate, MCF-7 whole cell lysate, HepG2 whole cell lysate. All lanes: BFSP2 antibody at 3.8 µg/mL. Secondary Goat polyclonal to rabbit IgG at 1/50000 dilution. Predicted band size: 46 kDa. Observed band size: 46 kDa.



### Immunofluorescence

**Image 3.** Immunofluorescence staining of HepG2 cells with ABIN7163038 at 1:133, counter-stained with DAPI. The cells were fixed in 4% formaldehyde, permeabilized using 0.2% Triton X-100 and blocked in 10% normal Goat Serum. The cells were then incubated with the antibody overnight at 4°C. The secondary antibody was Alexa Fluor 488-conjugated AffiniPure Goat Anti-Rabbit IgG(H+L).