

Datasheet for ABIN7163052  
**anti-PHF21A antibody (AA 312-487)**[Go to Product page](#)

## 4 Images

## Overview

Quantity:	100 µg
Target:	PHF21A
Binding Specificity:	AA 312-487
Reactivity:	Human
Host:	Rabbit
Clonality:	Polyclonal
Conjugate:	This PHF21A antibody is un-conjugated
Application:	Western Blotting (WB), ELISA, Immunohistochemistry (IHC), Immunofluorescence (IF)

## Product Details

Immunogen:	Recombinant Human PHD finger protein 21A protein (312-487AA)
Isotype:	IgG
Cross-Reactivity:	Human, Mouse
Purification:	>95%, Protein G purified

## Target Details

Target:	PHF21A
Alternative Name:	PHF21A ( <a href="#">PHF21A Products</a> )
Background:	Background: Component of the BHC complex, a corepressor complex that represses transcription of neuron-specific genes in non-neuronal cells. The BHC complex is recruited at

## Target Details

RE1/NRSE sites by REST and acts by deacetylating and demethylating specific sites on histones, thereby acting as a chromatin modifier. In the BHC complex, it may act as a scaffold. Inhibits KDM1A-mediated demethylation of 'Lys-4' of histone H3 in vitro, suggesting a role in demethylation regulation.

Aliases: BHC80a antibody, BM-006 antibody, BRAF35-HDAC complex protein BHC80 antibody, BRAF35/HDAC2 complex (80 kDa) antibody, KIAA1696 antibody, PF21A\_HUMAN antibody, PHD finger protein 21A antibody, PHF21A antibody

UniProt: [Q96BD5](#)

Pathways: [Feeding Behaviour](#)

## Application Details

Application Notes: Recommended dilution: WB:1:500-1:5000, IHC:1:20-1:200, IF:1:50-1:200,

Restrictions: For Research Use only

## Handling

Format: Liquid

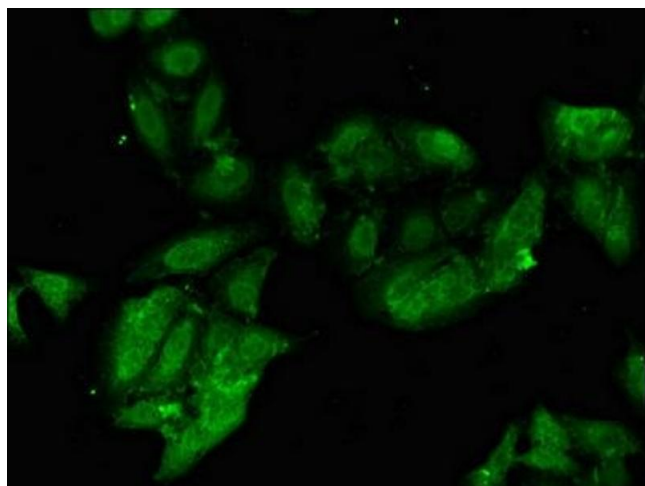
Buffer: Preservative: 0.03 % Proclin 300  
Constituents: 50 % Glycerol, 0.01M PBS, pH 7.4

Preservative: ProClin

Precaution of Use: This product contains ProClin: a POISONOUS AND HAZARDOUS SUBSTANCE which should be handled by trained staff only.

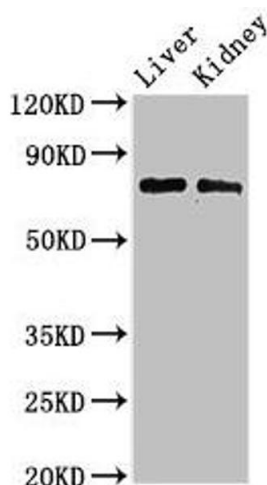
Storage: -20 °C,-80 °C

Storage Comment: Upon receipt, store at -20°C or -80°C. Avoid repeated freeze.



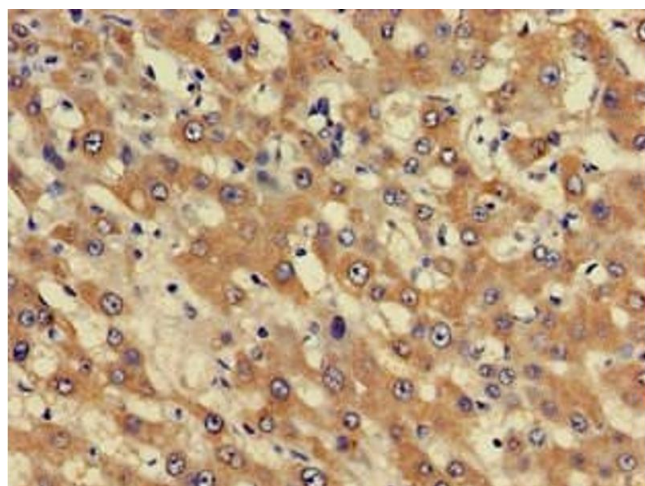
#### Immunofluorescence

**Image 1.** Immunofluorescent analysis of HeLa cells using ABIN7163052 at dilution of 1:100 and Alexa Fluor 488-conjugated AffiniPure Goat Anti-Rabbit IgG(H+L)



#### Western Blotting

**Image 2.** Western Blot Positive WB detected in: Mouse liver tissue, Mouse kidney tissue All lanes: PHF21A antibody at 3 µg/mL Secondary Goat polyclonal to rabbit IgG at 1/50000 dilution Predicted band size: 75, 71 kDa Observed band size: 75 kDa



#### Immunohistochemistry

**Image 3.** Immunohistochemistry of paraffin-embedded human liver cancer using ABIN7163052 at dilution of 1:100

Please check the [product details page](#) for more images. Overall 4 images are available for ABIN7163052.