

Datasheet for ABIN7163056
anti-PHF6 antibody (AA 2-312)

4 Images

[Go to Product page](#)

Overview

Quantity:	100 µg
Target:	PHF6
Binding Specificity:	AA 2-312
Reactivity:	Human
Host:	Rabbit
Clonality:	Polyclonal
Conjugate:	This PHF6 antibody is un-conjugated
Application:	Western Blotting (WB), ELISA, Immunohistochemistry (IHC), Immunoprecipitation (IP), Immunofluorescence (IF)

Product Details

Immunogen:	Recombinant Human PHD finger protein 6 protein (2-312AA)
Isotype:	IgG
Cross-Reactivity:	Human
Purification:	>95%, Protein G purified

Target Details

Target:	PHF6
Alternative Name:	PHF6 (PHF6 Products)
Background:	Background: Transcriptional regulator that associates with ribosomal RNA promoters and

Target Details

suppresses ribosomal RNA (rRNA) transcription.

Aliases: AC004383.6 antibody, BFLS antibody, BORJ antibody, CENP 31 antibody, Centromere protein 31 antibody, MGC14797 antibody, OTTHUMP00000024063 antibody, PHD finger protein 6 antibody, PHD like zinc finger protein antibody, PHD-like zinc finger protein antibody, Phf6 antibody, PHF6_HUMAN antibody

UniProt: [Q8IWS0](#)

Application Details

Application Notes: Recommended dilution: WB:1:500-1:5000, IHC:1:20-1:200, IF:1:50-1:500, IP:1:200-1:2000,

Restrictions: For Research Use only

Handling

Format: Liquid

Buffer: Preservative: 0.03 % Proclin 300
Constituents: 50 % Glycerol, 0.01M PBS, PH 7.4

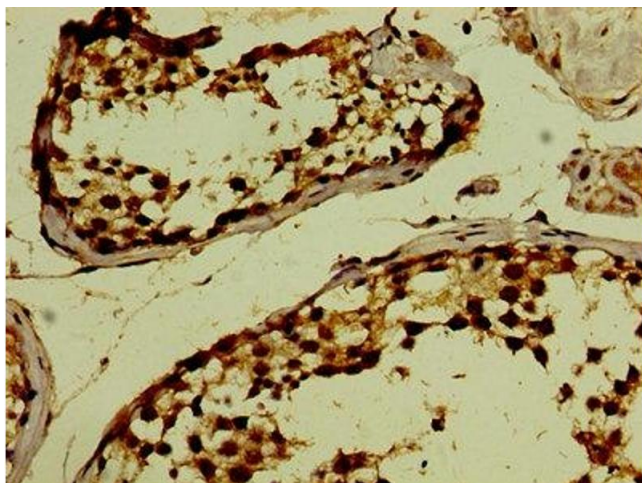
Preservative: ProClin

Precaution of Use: This product contains ProClin: a POISONOUS AND HAZARDOUS SUBSTANCE which should be handled by trained staff only.

Storage: -20 °C,-80 °C

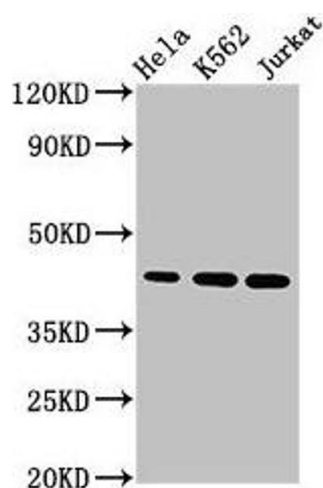
Storage Comment: Upon receipt, store at -20°C or -80°C. Avoid repeated freeze.

Images



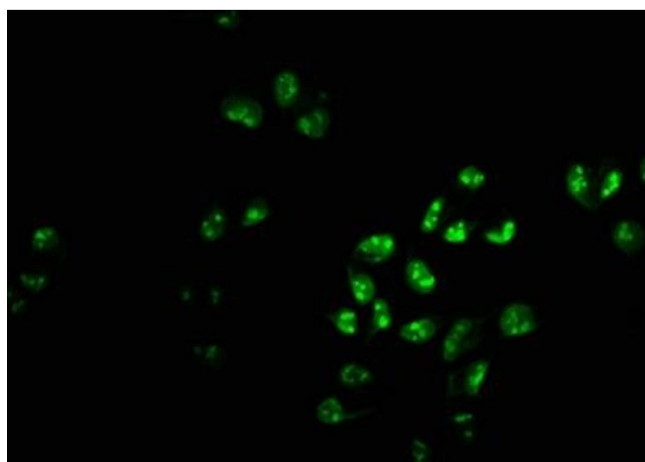
Immunohistochemistry

Image 1. Immunohistochemistry of paraffin-embedded human testis tissue using ABIN7163056 at dilution of 1:100



Western Blotting

Image 2. Western Blot Positive WB detected in: HeLa whole cell lysate, K562 whole cell lysate, Jurkat whole cell lysate
All lanes: PHF6 antibody at 2.8 µg/mL Secondary Goat polyclonal to rabbit IgG at 1/50000 dilution Predicted band size: 42, 36, 38 kDa Observed band size: 42 kDa



Immunofluorescence

Image 3. Immunofluorescence staining of HeLa cells with ABIN7163056 at 1:233, counter-stained with DAPI. The cells were fixed in 4% formaldehyde, permeabilized using 0.2% Triton X-100 and blocked in 10% normal Goat Serum. The cells were then incubated with the antibody overnight at 4°C. The secondary antibody was Alexa Fluor 488-conjugated AffiniPure Goat Anti-Rabbit IgG(H+L).

Please check the [product details page](#) for more images. Overall 4 images are available for ABIN7163056.