

Datasheet for ABIN7163068
anti-PBLD1 antibody (AA 11-288)

2 Images

[Go to Product page](#)

Overview

Quantity:	100 µg
Target:	PBLD1
Binding Specificity:	AA 11-288
Reactivity:	Human
Host:	Rabbit
Clonality:	Polyclonal
Conjugate:	This PBLD1 antibody is un-conjugated
Application:	Western Blotting (WB), ELISA, Immunohistochemistry (IHC)

Product Details

Immunogen:	Recombinant Human Phenazine biosynthesis-like domain-containing protein (11-288AA)
Isotype:	IgG
Cross-Reactivity:	Human, Mouse
Purification:	>95%, Protein G purified

Target Details

Target:	PBLD1
Alternative Name:	PBLD (PBLD1 Products)
Background:	Background: cytoplasm, extracellular exosome, maintenance of gastrointestinal epithelium, negative regulation of epithelial cell migration, negative regulation of epithelial cell proliferation,

Target Details

negative regulation of epithelial to mesenchymal transition, negative regulation of pathway-restricted SMAD protein phosphorylation, negative regulation of SMAD protein import into nucleus, negative regulation of transforming growth factor beta receptor signaling pathway
Aliases: FLJ14767 antibody, FLJ35507 antibody, MAWBP antibody, MAWD binding protein antibody, MAWD-binding protein antibody, MAWDBP antibody, OTTHUMP00000019698 antibody, OTTHUMP00000082489 antibody, PBLD antibody, PBLD_HUMAN antibody, Phenazine biosynthesis like domain containing protein antibody, Phenazine biosynthesis like protein domain containing antibody, Phenazine biosynthesis-like domain-containing protein antibody, Unknown protein 32 from 2D page of liver tissue antibody, Unknown protein 32 from 2D-page of liver tissue antibody

UniProt: [P30039](#)

Application Details

Application Notes: Recommended dilution: WB:1:500-1:2000, IHC:1:20-1:200,

Restrictions: For Research Use only

Handling

Format: Liquid

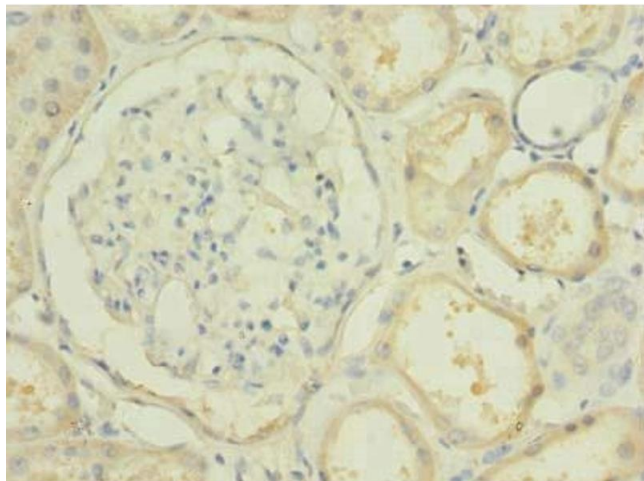
Buffer: Preservative: 0.03 % Proclin 300
Constituents: 50 % Glycerol, 0.01M PBS, PH 7.4

Preservative: ProClin

Precaution of Use: This product contains ProClin: a POISONOUS AND HAZARDOUS SUBSTANCE which should be handled by trained staff only.

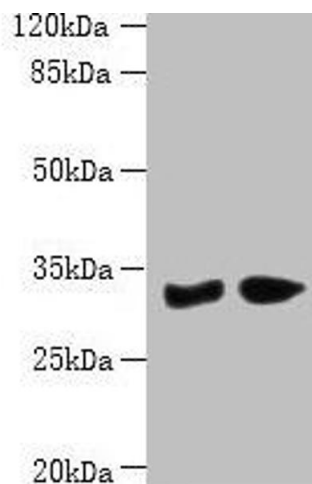
Storage: -20 °C, -80 °C

Storage Comment: Upon receipt, store at -20°C or -80°C. Avoid repeated freeze.



Immunohistochemistry

Image 1. Immunohistochemistry of paraffin-embedded human kidney tissue using ABIN7163068 at dilution of 1:100



Western Blotting

Image 2. Western blot All lanes: PBLD antibody at 6 µg/mL
Lane 1: Mouse liver tissue Lane 2: Mouse kidney tissue
Secondary Goat polyclonal to rabbit IgG at 1/10000 dilution
Predicted band size: 32 kDa Observed band size: 32 kDa