

Datasheet for ABIN7163100  
**anti-PHACTR1 antibody (AA 263-387)**[Go to Product page](#)

## 4 Images

## Overview

Quantity:	100 µg
Target:	PHACTR1
Binding Specificity:	AA 263-387
Reactivity:	Human
Host:	Rabbit
Clonality:	Polyclonal
Conjugate:	This PHACTR1 antibody is un-conjugated
Application:	Western Blotting (WB), ELISA, Immunohistochemistry (IHC), Immunofluorescence (IF)

## Product Details

Immunogen:	Recombinant Human Phosphatase and actin regulator 1 protein (263-387AA)
Isotype:	IgG
Cross-Reactivity:	Human, Mouse, Rat
Purification:	>95%, Protein G purified

## Target Details

Target:	PHACTR1
Alternative Name:	PHACTR1 ( <a href="#">PHACTR1 Products</a> )
Background:	Background: Binds actin monomers (G actin) and plays a role in the reorganization of the actin cytoskeleton and in formation of actin stress fibers. Plays a role in cell motility. Plays a role in

## Target Details

the formation of tubules by endothelial cells. Regulates PPP1CA activity. Required for normal cell survival.

Aliases: PHACTR1 antibody, KIAA1733 antibody, RPEL1 antibody, Phosphatase and actin regulator 1 antibody

UniProt: [Q9C0D0](#)

## Application Details

Application Notes: Recommended dilution: WB:1:500-1:5000, IHC:1:200-1:500, IF:1:50-1:200,

Restrictions: For Research Use only

## Handling

Format: Liquid

Buffer: Preservative: 0.03 % Proclin 300  
Constituents: 50 % Glycerol, 0.01M PBS, pH 7.4

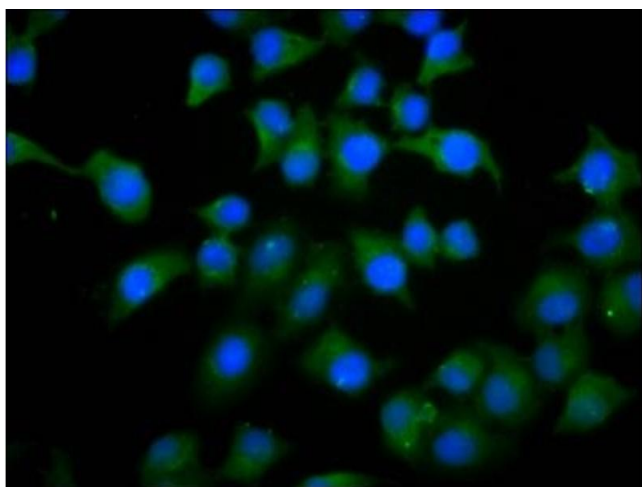
Preservative: ProClin

Precaution of Use: This product contains ProClin: a POISONOUS AND HAZARDOUS SUBSTANCE which should be handled by trained staff only.

Storage: -20 °C,-80 °C

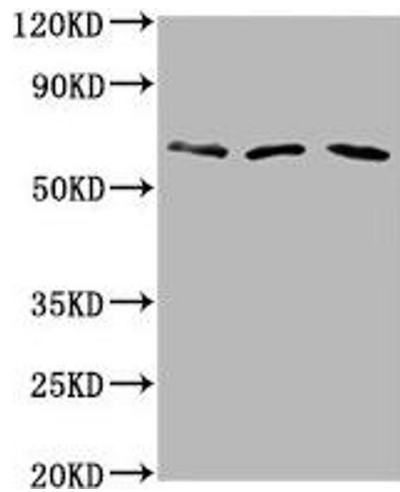
Storage Comment: Upon receipt, store at -20°C or -80°C. Avoid repeated freeze.

## Images



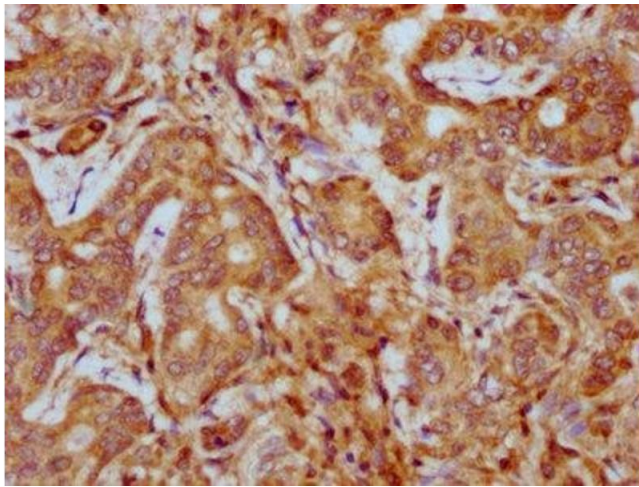
### Immunofluorescence

**Image 1.** Immunofluorescence staining of A549 cells with ABIN7163100 at 1:133, counter-stained with DAPI. The cells were fixed in 4% formaldehyde, permeabilized using 0.2% Triton X-100 and blocked in 10% normal Goat Serum. The cells were then incubated with the antibody overnight at 4°C. The secondary antibody was Alexa Fluor 488-conjugated AffiniPure Goat Anti-Rabbit IgG(H+L).



#### Western Blotting

**Image 2.** Western Blot Positive WB detected in: Hela whole cell lysate, Rat brain tissue, Mouse brain tissue All lanes: PHACTR1 antibody at 6 µg/mL Secondary Goat polyclonal to rabbit IgG at 1/50000 dilution Predicted band size: 67, 55 kDa Observed band size: 67 kDa



#### Immunohistochemistry

**Image 3.** IHC image of ABIN7163100 diluted at 1:400 and staining in paraffin-embedded human liver cancer performed on a Leica Bond™ system. After dewaxing and hydration, antigen retrieval was mediated by high pressure in a citrate buffer (pH 6.0). Section was blocked with 10% normal goat serum 30min at RT. Then primary antibody (1% BSA) was incubated at 4°C overnight. The primary is detected by a biotinylated secondary antibody and visualized using an HRP conjugated SP system.

Please check the [product details page](#) for more images. Overall 4 images are available for ABIN7163100.