

Datasheet for ABIN7163135

**anti-Sphingomyelin Synthase 2 antibody (AA 1-79)****3** Images[Go to Product page](#)

## Overview

Quantity:	100 µg
Target:	Sphingomyelin Synthase 2 (SGMS2)
Binding Specificity:	AA 1-79
Reactivity:	Human
Host:	Rabbit
Clonality:	Polyclonal
Conjugate:	This Sphingomyelin Synthase 2 antibody is un-conjugated
Application:	Western Blotting (WB), ELISA, Immunohistochemistry (IHC), Immunofluorescence (IF)

## Product Details

Immunogen:	Recombinant Human Phosphatidylcholine:ceramide cholinephosphotransferase 2 protein (1-79AA)
Isotype:	IgG
Cross-Reactivity:	Human, Rat
Purification:	>95%, Protein G purified

## Target Details

Target:	Sphingomyelin Synthase 2 (SGMS2)
Alternative Name:	SGMS2 ( <a href="#">SGMS2 Products</a> )
Background:	Background: Sphingomyelin synthases synthesize the sphingolipid, sphingomyelin, through

## Target Details

transfer of the phosphatidyl head group, phosphatidylcholine, on to the primary hydroxyl of ceramide. The reaction is bidirectional depending on the respective levels of the sphingolipid and ceramide. Plasma membrane SMS2 can also convert phosphatidylethanolamine (PE) to ceramide phosphatidylethanolamine (CPE). Major form in liver. Required for cell growth in certain cell types. Regulator of cell surface levels of ceramide, an important mediator of signal transduction and apoptosis. Regulation of sphingomyelin (SM) levels at the cell surface affects insulin sensitivity.

Aliases: MGC26963 antibody, Phosphatidylcholine:ceramide cholinephosphotransferase 2 antibody, SGMS 2 antibody, Sgms2 antibody, SM synthase antibody, SMS 2 antibody, SMS2 antibody, SMS2\_HUMAN antibody, Sphingomyelin synthase 2 antibody

UniProt: [Q8NHU3](#)

## Application Details

Application Notes: Recommended dilution: WB:1:500-1:5000, IHC:1:500-1:1000, IF:1:200-1:500,

Restrictions: For Research Use only

## Handling

Format: Liquid

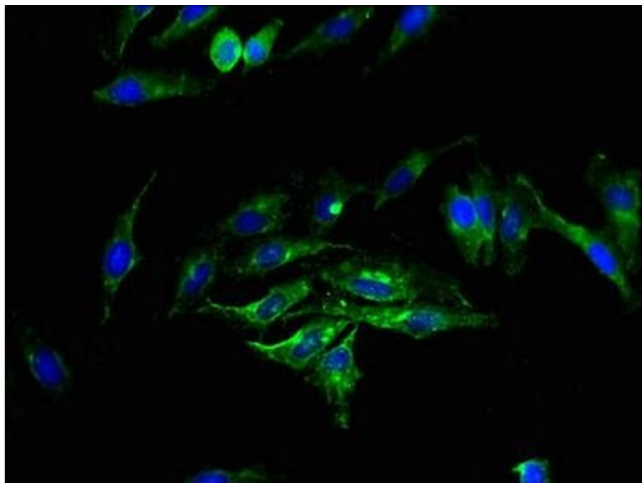
Buffer: Preservative: 0.03 % Proclin 300  
Constituents: 50 % Glycerol, 0.01M PBS, PH 7.4

Preservative: ProClin

Precaution of Use: This product contains ProClin: a POISONOUS AND HAZARDOUS SUBSTANCE which should be handled by trained staff only.

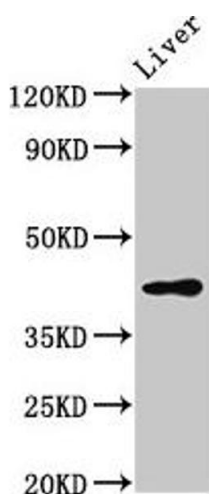
Storage: -20 °C, -80 °C

Storage Comment: Upon receipt, store at -20°C or -80°C. Avoid repeated freeze.



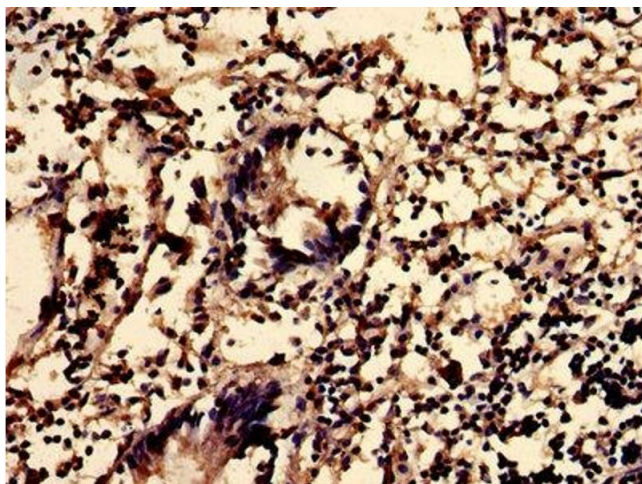
#### Immunofluorescence

**Image 1.** Immunofluorescence staining of HeLa cells with ABIN7163135 at 1:200, counter-stained with DAPI. The cells were fixed in 4% formaldehyde, permeabilized using 0.2% Triton X-100 and blocked in 10% normal Goat Serum. The cells were then incubated with the antibody overnight at 4°C. The secondary antibody was Alexa Fluor 488-conjugated AffiniPure Goat Anti-Rabbit IgG(H+L).



#### Western Blotting

**Image 2.** Western Blot Positive WB detected in: Rat liver tissue All lanes: SGMS2 antibody at 3 µg/mL Secondary Goat polyclonal to rabbit IgG at 1/50000 dilution Predicted band size: 43 kDa Observed band size: 43 kDa



#### Immunohistochemistry

**Image 3.** IHC image of ABIN7163135 diluted at 1:600 and staining in paraffin-embedded human appendix tissue performed on a Leica Bond™ system. After dewaxing and hydration, antigen retrieval was mediated by high pressure in a citrate buffer (pH 6.0). Section was blocked with 10% normal goat serum 30min at RT. Then primary antibody (1% BSA) was incubated at 4°C overnight. The primary is detected by a biotinylated secondary antibody and visualized using an HRP conjugated SP system.