



[Go to Product page](#)

Datasheet for ABIN7163173
anti-TPTE2 antibody (AA 167-411)

1 Image

Overview

Quantity:	100 µg
Target:	TPTE2
Binding Specificity:	AA 167-411
Reactivity:	Human
Host:	Rabbit
Clonality:	Polyclonal
Conjugate:	This TPTE2 antibody is un-conjugated
Application:	ELISA, Immunohistochemistry (IHC)

Product Details

Immunogen:	Recombinant Human Phosphatidylinositol 3,4,5-trisphosphate 3-phosphatase TPTE2 protein (167-411AA)
Isotype:	IgG
Cross-Reactivity:	Human
Purification:	>95%, Protein G purified

Target Details

Target:	TPTE2
Alternative Name:	TPTE2 (TPTE2 Products)
Background:	Background: Golgi membrane, phosphatidylinositol biosynthetic process, phospholipid

Target Details

metabolic process, small molecule metabolic process

Aliases: TPTE2 antibody, TPIP antibody, Phosphatidylinositol 3,4,5-trisphosphate 3-phosphatase TPTE2 antibody, EC 3.1.3.67 antibody, Lipid phosphatase TPIP antibody, TPTE and PTEN homologous inositol lipid phosphatase antibody

UniProt: [Q6XPS3](#)

Pathways: [Inositol Metabolic Process](#)

Application Details

Application Notes: Recommended dilution: IHC:1:20-1:200,

Restrictions: For Research Use only

Handling

Format: Liquid

Buffer: Preservative: 0.03 % Proclin 300
Constituents: 50 % Glycerol, 0.01M PBS, PH 7.4

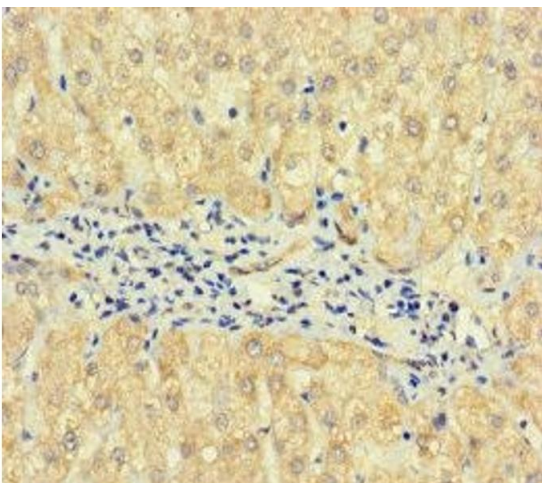
Preservative: ProClin

Precaution of Use: This product contains ProClin: a POISONOUS AND HAZARDOUS SUBSTANCE which should be handled by trained staff only.

Storage: -20 °C,-80 °C

Storage Comment: Upon receipt, store at -20°C or -80°C. Avoid repeated freeze.

Images



Immunohistochemistry

Image 1. Immunohistochemistry of paraffin-embedded human liver cancer using ABIN7163173 at dilution of 1:100