

Datasheet for ABIN7163234  
**anti-PIGW antibody (AA 392-448)**[Go to Product page](#)

## 1 Image

## Overview

Quantity:	100 µg
Target:	PIGW
Binding Specificity:	AA 392-448
Reactivity:	Human
Host:	Rabbit
Clonality:	Polyclonal
Conjugate:	This PIGW antibody is un-conjugated
Application:	Western Blotting (WB), ELISA

## Product Details

Immunogen:	Recombinant Human Phosphatidylinositol-glycan biosynthesis class W protein (392-448AA)
Isotype:	IgG
Cross-Reactivity:	Human, Rat
Purification:	>95%, Protein G purified

## Target Details

Target:	PIGW
Alternative Name:	PIGW ( <a href="#">PIGW Products</a> )
Background:	Background: Required for the transport of GPI-anchored proteins to the plasma membrane (PubMed:24367057). Probable acetyltransferase, which acetylates the inositol ring of

## Target Details

phosphatidylinositol during biosynthesis of GPI-anchor. Acetylation during GPI-anchor biosynthesis is not essential for the subsequent mannosylation and is usually removed soon after the attachment of GPIs to proteins (By similarity).

Aliases: PIGW antibody, Phosphatidylinositol-glycan biosynthesis class W protein antibody, PIG-W antibody, EC 2.3.-.- antibody

UniProt: [Q7Z7B1](#)

Pathways: [Inositol Metabolic Process](#)

## Application Details

Application Notes: Recommended dilution: WB:1:500-1:5000,

Restrictions: For Research Use only

## Handling

Format: Liquid

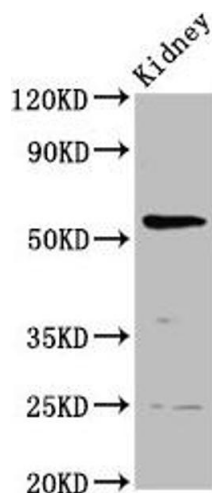
Buffer: Preservative: 0.03 % Proclin 300  
Constituents: 50 % Glycerol, 0.01M PBS, pH 7.4

Preservative: ProClin

Precaution of Use: This product contains ProClin: a POISONOUS AND HAZARDOUS SUBSTANCE which should be handled by trained staff only.

Storage: -20 °C,-80 °C

Storage Comment: Upon receipt, store at -20°C or -80°C. Avoid repeated freeze.



Western Blotting

**Image 1.** Western Blot Positive WB detected in: Rat kidney tissue All lanes: PIGW antibody at 3.7 µg/mL Secondary Goat polyclonal to rabbit IgG at 1/50000 dilution Predicted band size: 57 kDa Observed band size: 57 kDa