

Datasheet for ABIN7163242
anti-GPLD1 antibody (AA 310-565)[Go to Product page](#)

2 Images

Overview

Quantity:	100 µL
Target:	GPLD1
Binding Specificity:	AA 310-565
Reactivity:	Human
Host:	Rabbit
Clonality:	Polyclonal
Conjugate:	This GPLD1 antibody is un-conjugated
Application:	Western Blotting (WB), ELISA, Immunohistochemistry (IHC)

Product Details

Immunogen:	Recombinant Human Phosphatidylinositol-glycan-specific phospholipase D protein (310-565AA)
Isotype:	IgG
Cross-Reactivity:	Human
Purification:	>95%, Protein G purified

Target Details

Target:	GPLD1
Alternative Name:	GPLD1 (GPLD1 Products)
Background:	Background: This protein hydrolyzes the inositol phosphate linkage in proteins anchored by

Target Details

phosphatidylinositol glycans (GPI-anchor) thus releasing these proteins from the membrane.

Aliases: Glycoprotein phospholipase D antibody, Glycosyl-phosphatidylinositol-specific phospholipase D antibody, GPI-PLD antibody, GPI-specific phospholipase D antibody, GPIPLD antibody, GPIPLDM antibody, GPLD1 antibody, MGC22590 antibody, PHLD_HUMAN antibody, Phosphatidylinositol glycan specific phospholipase D antibody, Phosphatidylinositol-glycan-specific phospholipase D antibody, PI-G PLD antibody, PIGPLD antibody, PIGPLD1 antibody

UniProt: [P80108](#)

Pathways: [Inositol Metabolic Process](#), [Regulation of Carbohydrate Metabolic Process](#)

Application Details

Application Notes: Recommended dilution: WB:1:1000-1:5000, IHC:1:20-1:200,

Restrictions: For Research Use only

Handling

Format: Liquid

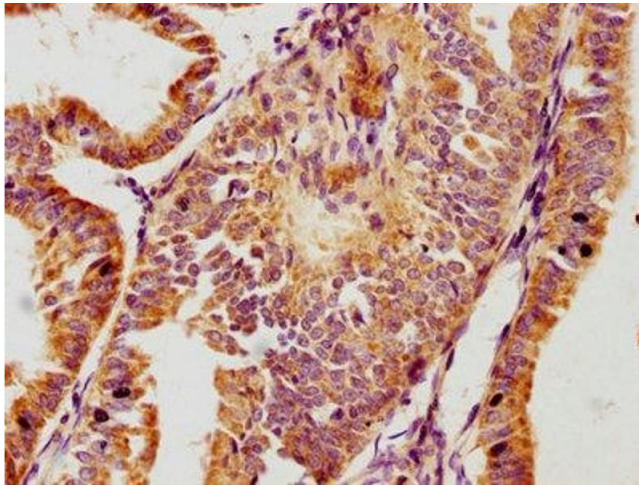
Buffer: Preservative: 0.03 % Proclin 300
Constituents: 50 % Glycerol, 0.01M PBS, pH 7.4

Preservative: ProClin

Precaution of Use: This product contains ProClin: a POISONOUS AND HAZARDOUS SUBSTANCE which should be handled by trained staff only.

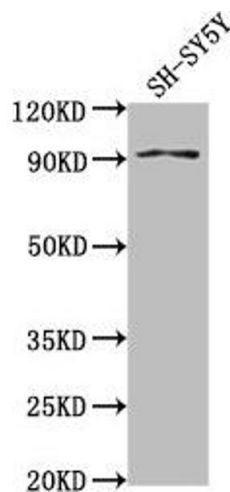
Storage: -20 °C, -80 °C

Storage Comment: Upon receipt, store at -20°C or -80°C. Avoid repeated freeze.



Immunohistochemistry

Image 1. IHC image of ABIN7163242 diluted at 1:100 and staining in paraffin-embedded human endometrial cancer performed on a Leica Bond™ system. After dewaxing and hydration, antigen retrieval was mediated by high pressure in a citrate buffer (pH 6.0). Section was blocked with 10 % normal goat serum 30 min at RT. Then primary antibody (1 % BSA) was incubated at 4 °C overnight. The primary is detected by a biotinylated secondary antibody and visualized using an HRP conjugated SP system.



Western Blotting

Image 2. Western Blot Positive WB detected in: SH-SY5Y whole cell lysate All lanes: GPLD1 antibody at 1:2000 Secondary Goat polyclonal to rabbit IgG at 1/50000 dilution Predicted band size: 93, 20 kDa Observed band size: 93 kDa