



[Go to Product page](#)

Datasheet for ABIN7163258
anti-PCK1 antibody (AA 1-622)

2 Images

Overview

Quantity:	100 µg
Target:	PCK1
Binding Specificity:	AA 1-622
Reactivity:	Human
Host:	Rabbit
Clonality:	Polyclonal
Conjugate:	This PCK1 antibody is un-conjugated
Application:	ELISA, Immunohistochemistry (IHC), Immunofluorescence (IF)

Product Details

Immunogen:	Recombinant Human Phosphoenolpyruvate carboxykinase, cytosolic [GTP] protein (1-622AA)
Isotype:	IgG
Cross-Reactivity:	Human
Purification:	>95%, Protein G purified

Target Details

Target:	PCK1
Alternative Name:	PCK1 (PCK1 Products)
Background:	Background: Catalyzes the conversion of oxaloacetate (OAA) to phosphoenolpyruvate (PEP), the rate-limiting step in the metabolic pathway that produces glucose from lactate and other

Target Details

precursors derived from the citric acid cycle.

Aliases: cytosolic [GTP] antibody, GTP antibody, PCK1 antibody, PCKGC_HUMAN antibody, PEP carboxykinase antibody, PEPCK-C antibody, PEPCK1 antibody, PEPCKC antibody, Phosphoenolpyruvate carboxykinase 1 (soluble) antibody, Phosphoenolpyruvate carboxykinase 1 antibody, Phosphoenolpyruvate carboxykinase antibody, Phosphoenolpyruvate carboxykinase, cytosolic [GTP] antibody, Phosphoenolpyruvate carboxykinase, cytosolic antibody, Phosphoenolpyruvate carboxylase antibody, Phosphopyruvate carboxylase antibody

UniProt: [P35558](#)

Pathways: [Positive Regulation of Peptide Hormone Secretion](#), [Carbohydrate Homeostasis](#)

Application Details

Application Notes: Recommended dilution: IHC:1:20-1:200, IF:1:50-1:200,

Restrictions: For Research Use only

Handling

Format: Liquid

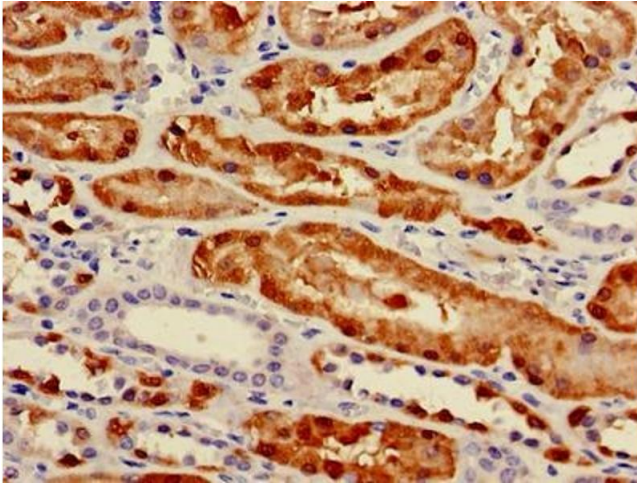
Buffer: Preservative: 0.03 % Proclin 300
Constituents: 50 % Glycerol, 0.01M PBS, PH 7.4

Preservative: ProClin

Precaution of Use: This product contains ProClin: a POISONOUS AND HAZARDOUS SUBSTANCE which should be handled by trained staff only.

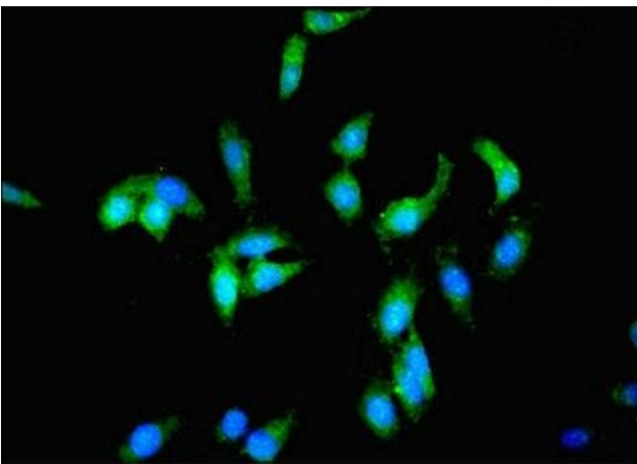
Storage: -20 °C,-80 °C

Storage Comment: Upon receipt, store at -20°C or -80°C. Avoid repeated freeze.



Immunohistochemistry

Image 1. Immunohistochemistry of paraffin-embedded human kidney tissue using ABIN7163258 at dilution of 1:100



Immunofluorescence

Image 2. Immunofluorescent analysis of HeLa cells using ABIN7163258 at dilution of 1:100 and Alexa Fluor 488-conjugated AffiniPure Goat Anti-Rabbit IgG(H+L)