

Datasheet for ABIN7163325  
**anti-ABHD3 antibody (AA 52-309)**[Go to Product page](#)

## 2 Images

## Overview

Quantity:	100 µg
Target:	ABHD3
Binding Specificity:	AA 52-309
Reactivity:	Human
Host:	Rabbit
Clonality:	Polyclonal
Conjugate:	This ABHD3 antibody is un-conjugated
Application:	ELISA, Immunohistochemistry (IHC), Immunofluorescence (IF)

## Product Details

Immunogen:	Recombinant Human Phospholipase ABHD3 protein (52-309AA)
Isotype:	IgG
Cross-Reactivity:	Human
Purification:	>95%, Protein G purified

## Target Details

Target:	ABHD3
Alternative Name:	ABHD3 ( <a href="#">ABHD3 Products</a> )
Background:	Background: Phospholipase that may play a role in phospholipids remodeling. May selectively cleave myristate (C14)-containing phosphatidylcholines through its predominant phospholipase

## Target Details

1 activity, cleaving preferentially acyl groups in sn1 position. In parallel, may have a minor phospholipase 2 activity acting on acyl groups in position sn2. In addition to (C14)-containing phosphatidylcholines, may also act on other medium-chain-containing and oxidatively truncated phospholipids.

Aliases: ABHD3Phospholipase ABHD3 antibody, EC 3.1.1.32 antibody, EC 3.1.1.4 antibody, Abhydrolase domain-containing protein 3 antibody

UniProt: [Q8WU67](#)

## Application Details

Application Notes: Recommended dilution: IHC:1:20-1:200, IF:1:50-1:200,

Restrictions: For Research Use only

## Handling

Format: Liquid

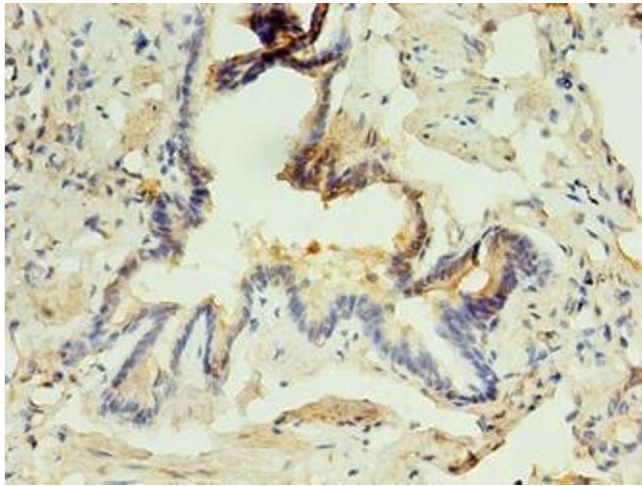
Buffer: Preservative: 0.03 % Proclin 300  
Constituents: 50 % Glycerol, 0.01M PBS, PH 7.4

Preservative: ProClin

Precaution of Use: This product contains ProClin: a POISONOUS AND HAZARDOUS SUBSTANCE which should be handled by trained staff only.

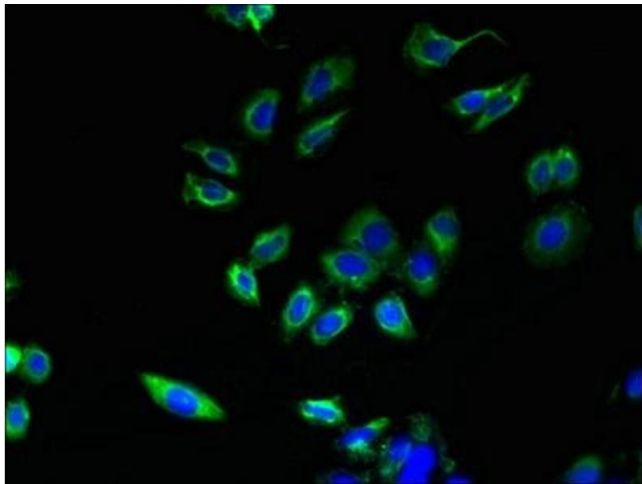
Storage: -20 °C,-80 °C

Storage Comment: Upon receipt, store at -20°C or -80°C. Avoid repeated freeze.



#### Immunohistochemistry

**Image 1.** Immunohistochemistry of paraffin-embedded human lung tissue using ABIN7163325 at dilution of 1:100



#### Immunofluorescence

**Image 2.** Immunofluorescent analysis of HepG2 cells using ABIN7163325 at dilution of 1:100 and Alexa Fluor 488-conjugated AffiniPure Goat Anti-Rabbit IgG(H+L)