



[Go to Product page](#)

Datasheet for ABIN7163329

## anti-PLD1 antibody (AA 485-627)

### 1 Image

#### Overview

Quantity:	100 µg
Target:	PLD1
Binding Specificity:	AA 485-627
Reactivity:	Human
Host:	Rabbit
Clonality:	Polyclonal
Conjugate:	This PLD1 antibody is un-conjugated
Application:	ELISA, Immunofluorescence (IF)

#### Product Details

Immunogen:	Recombinant Human Phospholipase D1 protein (485-627AA)
Isotype:	IgG
Cross-Reactivity:	Human
Purification:	>95%, Protein G purified

#### Target Details

Target:	PLD1
Alternative Name:	PLD1 ( <a href="#">PLD1 Products</a> )
Background:	Background: Implicated as a critical step in numerous cellular pathways, including signal transduction, membrane trafficking, and the regulation of mitosis. May be involved in the

## Target Details

regulation of perinuclear intravesicular membrane traffic (By similarity).

Aliases: Choline phosphatase 1 antibody, hPLD1 antibody, Phosphatidylcholine-hydrolyzing phospholipase D1 antibody, Phospholipase D1 antibody, PLD 1 antibody, PLD1 antibody, PLD1\_HUMAN antibody

UniProt: [Q13393](#)

## Application Details

Application Notes: Recommended dilution: IF:1:50-1:200,

Restrictions: For Research Use only

## Handling

Format: Liquid

Buffer: Preservative: 0.03 % Proclin 300  
Constituents: 50 % Glycerol, 0.01M PBS, pH 7.4

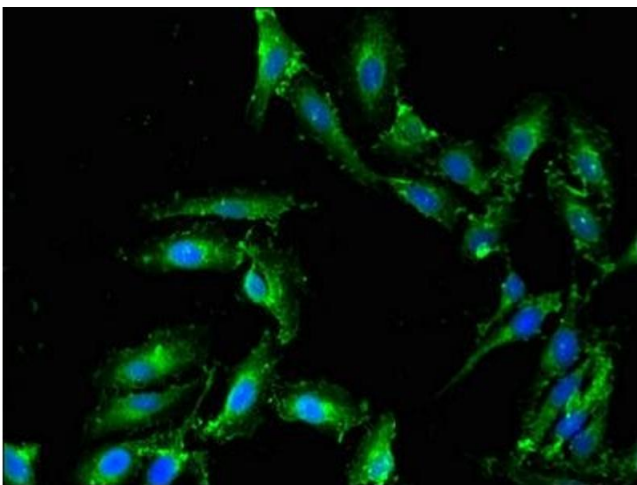
Preservative: ProClin

Precaution of Use: This product contains ProClin: a POISONOUS AND HAZARDOUS SUBSTANCE which should be handled by trained staff only.

Storage: -20 °C,-80 °C

Storage Comment: Upon receipt, store at -20°C or -80°C. Avoid repeated freeze.

## Images



### Immunofluorescence

**Image 1.** Immunofluorescent analysis of HeLa cells using ABIN7163329 at dilution of 1:100 and Alexa Fluor 488-conjugated AffiniPure Goat Anti-Rabbit IgG(H+L)