



[Go to Product page](#)

Datasheet for ABIN7163337  
**anti-PLD3 antibody (AA 70-176)**

2 Images

Overview

Quantity:	100 µg
Target:	PLD3
Binding Specificity:	AA 70-176
Reactivity:	Human
Host:	Rabbit
Clonality:	Polyclonal
Conjugate:	This PLD3 antibody is un-conjugated
Application:	ELISA, Immunohistochemistry (IHC), Immunofluorescence (IF)

Product Details

Immunogen:	Recombinant Human Phospholipase D3 protein (70-176AA)
Isotype:	IgG
Cross-Reactivity:	Human
Purification:	>95%, Protein G purified

Target Details

Target:	PLD3
Alternative Name:	PLD3 ( <a href="#">PLD3 Products</a> )
Background:	Background: May be involved in APP processing. Aliases: Choline phosphatase 3 antibody, HindIII K4L homolog antibody, HU K4 antibody, Hu-K4

## Target Details

antibody, HUK4 antibody, Phosphatidylcholine hydrolyzing phospholipase D3 antibody, Phosphatidylcholine-hydrolyzing phospholipase D3 antibody, Phospholipase D family, member 3 antibody, Phospholipase D3 antibody, PLD 3 antibody, PLD3 antibody, PLD3\_HUMAN antibody

UniProt: [Q8IV08](#)

Pathways: [SARS-CoV-2 Protein Interactome](#)

## Application Details

Application Notes: Recommended dilution: IHC:1:20-1:200, IF:1:50-1:200,

Restrictions: For Research Use only

## Handling

Format: Liquid

Buffer: Preservative: 0.03 % Proclin 300  
Constituents: 50 % Glycerol, 0.01M PBS, pH 7.4

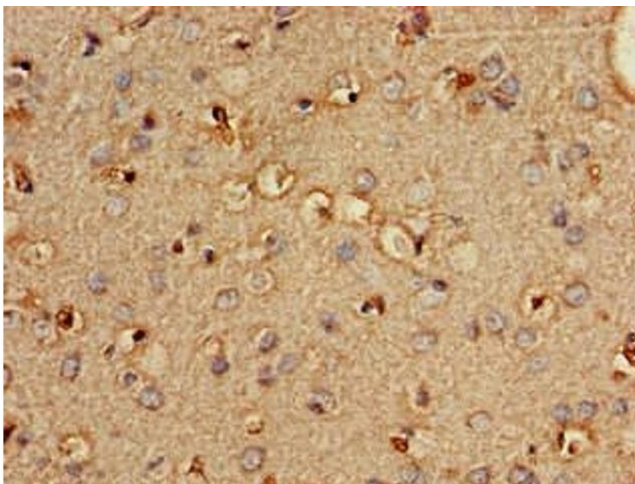
Preservative: ProClin

Precaution of Use: This product contains ProClin: a POISONOUS AND HAZARDOUS SUBSTANCE which should be handled by trained staff only.

Storage: -20 °C,-80 °C

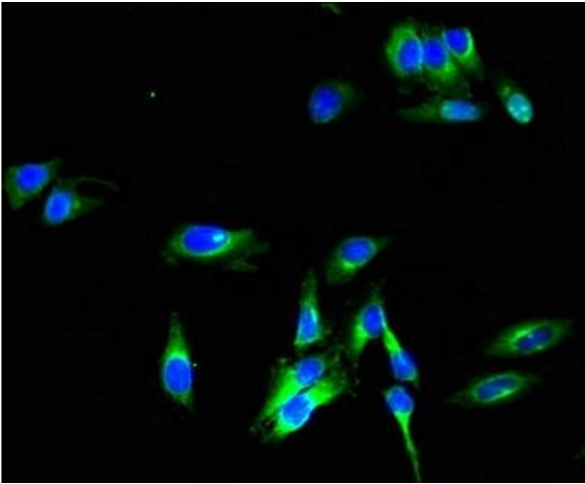
Storage Comment: Upon receipt, store at -20°C or -80°C. Avoid repeated freeze.

## Images



### Immunohistochemistry

**Image 1.** Immunohistochemistry of paraffin-embedded human brain tissue using ABIN7163337 at dilution of 1:100



### Immunofluorescence

**Image 2.** Immunofluorescent analysis of HeLa cells using ABIN7163337 at dilution of 1:100 and Alexa Fluor 488-conjugated AffiniPure Goat Anti-Rabbit IgG(H+L)