

Datasheet for ABIN7163361  
**anti-PLSCR1 antibody (AA 1-318)**[Go to Product page](#)

## 2 Images

## Overview

Quantity:	100 µL
Target:	PLSCR1
Binding Specificity:	AA 1-318
Reactivity:	Human
Host:	Rabbit
Clonality:	Polyclonal
Conjugate:	This PLSCR1 antibody is un-conjugated
Application:	Western Blotting (WB), Immunohistochemistry (IHC), ELISA

## Product Details

Immunogen:	Recombinant Human Phospholipid scramblase 1 protein (1-318AA)
Isotype:	IgG
Cross-Reactivity:	Human
Purification:	Antigen Affinity Purified

## Target Details

Target:	PLSCR1
Alternative Name:	PLSCR1 ( <a href="#">PLSCR1 Products</a> )
Background:	Background: May mediate accelerated ATP-independent bidirectional transbilayer migration of phospholipids upon binding calcium ions that results in a loss of phospholipid asymmetry in

## Target Details

the plasma membrane. May play a central role in the initiation of fibrin clot formation, in the activation of mast cells and in the recognition of apoptotic and injured cells by the reticuloendothelial system.

Aliases: Ca(2+) dependent phospholipid scramblase 1 antibody, Ca(2+)-dependent phospholipid scramblase 1 antibody, Erythrocyte phospholipid scramblase antibody, MM1 cell-derived transplantability-associated gene 1b, mouse, homolog of antibody, MmTRA1a antibody, MmTRA1b antibody, Nor1 antibody, Phospholipid scramblase 1 antibody, PL scramblase 1 antibody, PLS1\_HUMAN antibody, PLSCR 1 antibody, Plscr1 antibody, Scramblase1 antibody, Tra1 antibody, Tra1a antibody, Tra1b antibody, Transplantability-associated protein 1 antibody, Tras1 antibody, Tras2 antibody

UniProt: [O15162](#)

Pathways: [Cellular Response to Molecule of Bacterial Origin](#)

## Application Details

Application Notes: Recommended dilution: WB:1:1000-1:5000, IHC:1:20-1:200,

Restrictions: For Research Use only

## Handling

Format: Liquid

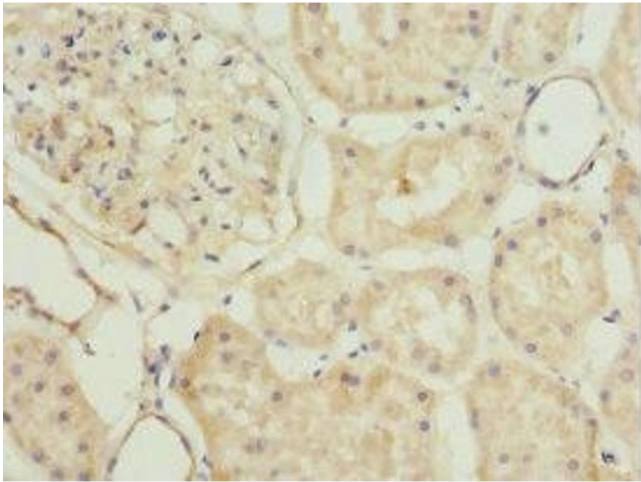
Buffer: PBS with 0.02 % sodium azide, 50 % glycerol, pH 7.3.

Preservative: Sodium azide

Precaution of Use: This product contains Sodium azide: a POISONOUS AND HAZARDOUS SUBSTANCE which should be handled by trained staff only.

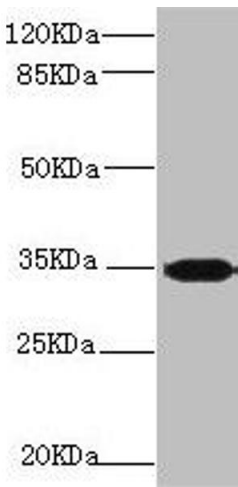
Storage: -20 °C,-80 °C

Storage Comment: Upon receipt, store at -20°C or -80°C. Avoid repeated freeze.



#### Immunohistochemistry

**Image 1.** Immunohistochemistry of paraffin-embedded human kidney tissue using ABIN7163361 at dilution of 1:100



#### Western Blotting

**Image 2.** Western blot All lanes: PLSCR1 antibody at 2.24  $\mu$ g/mL + 293T whole cell lysate Secondary Goat polyclonal to rabbit IgG at 1/10000 dilution Predicted band size: 36, 27 kDa Observed band size: 36 kDa