

Datasheet for ABIN7163370
anti-ATP8A2 antibody (AA 358-570)[Go to Product page](#)

2 Images

Overview

Quantity:	100 µg
Target:	ATP8A2
Binding Specificity:	AA 358-570
Reactivity:	Human
Host:	Rabbit
Clonality:	Polyclonal
Conjugate:	This ATP8A2 antibody is un-conjugated
Application:	ELISA, Immunohistochemistry (IHC), Immunofluorescence (IF)

Product Details

Immunogen:	Recombinant Human Phospholipid-transporting ATPase IB protein (358-570AA)
Isotype:	IgG
Cross-Reactivity:	Human
Purification:	>95%, Protein G purified

Target Details

Target:	ATP8A2
Alternative Name:	ATP8A2 (ATP8A2 Products)
Background:	Background: Catalytic component of a P4-ATPase flippase complex which catalyzes the hydrolysis of ATP coupled to the transport of aminophospholipids from the outer to the inner

Target Details

leaflet of various membranes and ensures the maintenance of asymmetric distribution of phospholipids. Phospholipid translocation seems also to be implicated in vesicle formation and in uptake of lipid signaling molecules. Reconstituted to liposomes, the ATP8A2:TMEM30A flippase complex predominantly transports phosphatidylserine (PS) and to a lesser extent phosphatidylethanolamine (PE). Proposed to function in the generation and maintenance of phospholipid asymmetry in photoreceptor disk membranes and neuronal axon membranes. May be involved in vesicle trafficking in neuronal cells. Involved in regulation of neurite outgrowth, acting in synergy with TMEM30A. Required for normal visual and auditory function, involved in photoreceptor and inner ear spiral ganglion cell survival.

Aliases: AT8A2_HUMAN antibody, ATP antibody, Atp8a2 antibody, ATPase aminophospholipid transporter class I type 8A member 2 antibody, ATPase aminophospholipid transporter like class I type 8A member 2 antibody, ATPase class I type 8A member 2 antibody, ATPase phospholipid transporting 8A2 antibody, ATPIB antibody, CAMRQ4 antibody, EC=3.6.3.1 antibody, IB antibody, ML-1 antibody, ML1 antibody, P4 ATPase flippase complex alpha subunit ATP8A2 antibody, Probable phospholipid-transporting ATPase IB antibody

UniProt: [Q9NTI2](#)

Application Details

Application Notes: Recommended dilution: IHC:1:20-1:200, IF:1:50-1:200,

Restrictions: For Research Use only

Handling

Format: Liquid

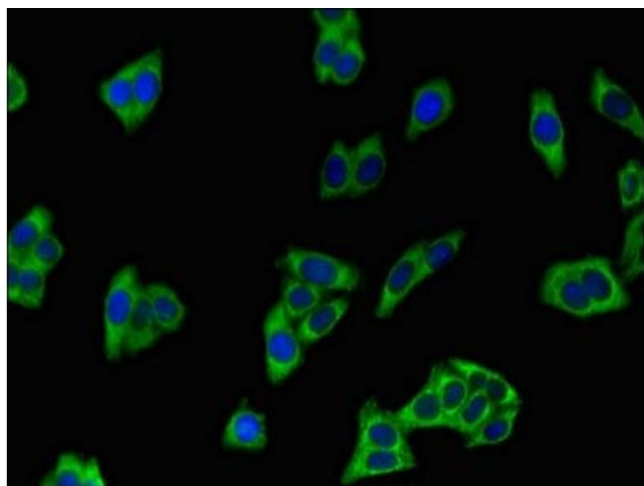
Buffer: Preservative: 0.03 % Proclin 300
Constituents: 50 % Glycerol, 0.01M PBS, PH 7.4

Preservative: ProClin

Precaution of Use: This product contains ProClin: a POISONOUS AND HAZARDOUS SUBSTANCE which should be handled by trained staff only.

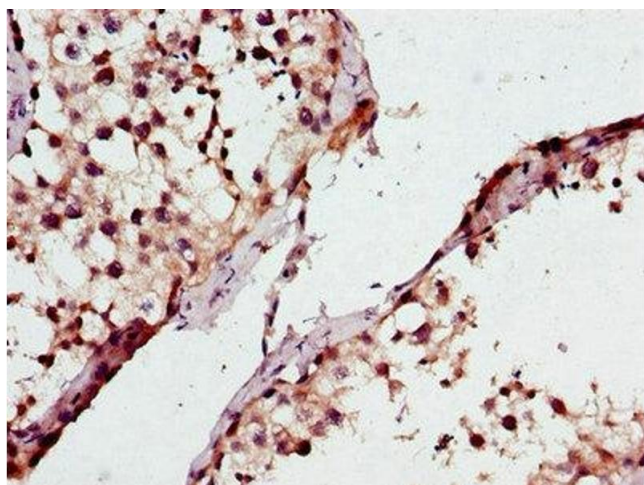
Storage: -20 °C,-80 °C

Storage Comment: Upon receipt, store at -20°C or -80°C. Avoid repeated freeze.



Immunofluorescence

Image 1. Immunofluorescent analysis of HepG2 cells using ABIN7163370 at dilution of 1:100 and Alexa Fluor 488-conjugated AffiniPure Goat Anti-Rabbit IgG(H+L)



Immunohistochemistry

Image 2. Immunohistochemistry of paraffin-embedded human testis tissue using ABIN7163370 at dilution of 1:100