

Datasheet for ABIN7163374  
**anti-ATP8B1 antibody (AA 217-330)**[Go to Product page](#)

## 1 Image

## Overview

Quantity:	100 µg
Target:	ATP8B1
Binding Specificity:	AA 217-330
Reactivity:	Human
Host:	Rabbit
Clonality:	Polyclonal
Conjugate:	This ATP8B1 antibody is un-conjugated
Application:	ELISA, Immunofluorescence (IF)

## Product Details

Immunogen:	Recombinant Human Phospholipid-transporting ATPase IC protein (217-330AA)
Isotype:	IgG
Cross-Reactivity:	Human
Purification:	>95%, Protein G purified

## Target Details

Target:	ATP8B1
Alternative Name:	ATP8B1 ( <a href="#">ATP8B1 Products</a> )
Background:	Background: Catalytic component of a P4-ATPase flippase complex which catalyzes the hydrolysis of ATP coupled to the transport of aminophospholipids from the outer to the inner

## Target Details

leaflet of various membranes and ensures the maintenance of asymmetric distribution of phospholipids. Phospholipid translocation seems also to be implicated in vesicle formation and in uptake of lipid signaling molecules. May play a role in asymmetric distribution of phospholipids in the canicular membrane. May have a role in transport of bile acids into the canaliculus, uptake of bile acids from intestinal contents into intestinal mucosa or both. In cooperation with ABCB4 may be involved in establishing integrity of the canalicular membrane thus protecting hepatocytes from bile salts. Together with TMEM30A is involved in uptake of the synthetic drug alkylphospholipid perifosine. Involved in the microvillus formation in polarized epithelial cells, the function seems to be independent from its flippase activity. Required for the preservation of cochlear hair cells in the inner ear. May act as cardiolipin transporter during inflammatory injury.

Aliases: AT8B1\_HUMAN antibody, ATP8B1 antibody, ATPase class I type 8B member 1 antibody, ATPase, aminophospholipid transporter, class I, type 8B, member 1 antibody, ATPIC antibody, BRIC antibody, E1-E2 ATPase antibody, Familial intrahepatic cholestasis type 1 antibody, FIC1 antibody, OTTHUMP00000163615 antibody, PFIC antibody, PFIC1 antibody, Phospholipid transporting ATPase IC antibody, Probable phospholipid-transporting ATPase IC antibody

UniProt: [O43520](#)

## Application Details

Application Notes: Recommended dilution: IF:1:50-1:200,

Restrictions: For Research Use only

## Handling

Format: Liquid

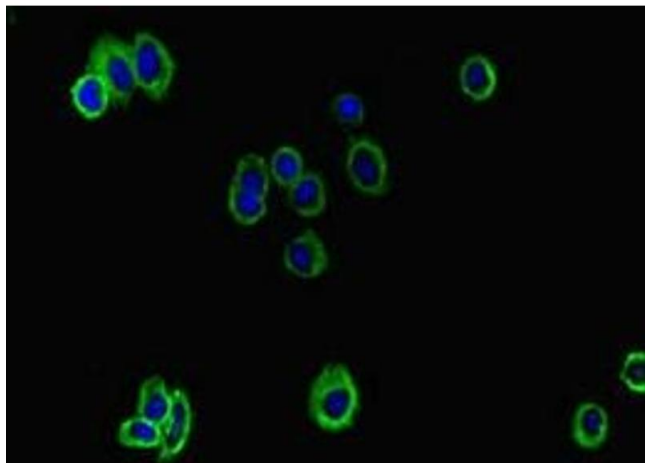
Buffer: Preservative: 0.03 % Proclin 300  
Constituents: 50 % Glycerol, 0.01M PBS, PH 7.4

Preservative: ProClin

Precaution of Use: This product contains ProClin: a POISONOUS AND HAZARDOUS SUBSTANCE which should be handled by trained staff only.

Storage: -20 °C, -80 °C

Storage Comment: Upon receipt, store at -20°C or -80°C. Avoid repeated freeze.



#### Immunofluorescence

**Image 1.** Immunofluorescent analysis of HepG2 cells using ABIN7163374 at dilution of 1:100 and Alexa Fluor 488-conjugated AffiniPure Goat Anti-Rabbit IgG(H+L)