

Datasheet for ABIN7163387  
**anti-PPCDC antibody (AA 51-183)**

## 2 Images

[Go to Product page](#)

## Overview

Quantity:	100 µg
Target:	PPCDC
Binding Specificity:	AA 51-183
Reactivity:	Human
Host:	Rabbit
Clonality:	Polyclonal
Conjugate:	This PPCDC antibody is un-conjugated
Application:	ELISA, Immunohistochemistry (IHC), Immunofluorescence (IF)

## Product Details

Immunogen:	Recombinant Human Phosphopantothienoylcysteine decarboxylase protein (51-183AA)
Isotype:	IgG
Cross-Reactivity:	Human
Purification:	>95%, Protein G purified

## Target Details

Target:	PPCDC
Alternative Name:	PPCDC ( <a href="#">PPCDC Products</a> )
Background:	Background: Necessary for the biosynthesis of coenzyme A. Catalyzes the decarboxylation of 4-phosphopantothienoylcysteine to form 4'-phosphopantotheine.

## Target Details

Aliases: 1810057113Rik antibody, 8430432M10Rik antibody, CoaC antibody, COAC\_HUMAN antibody, FLJ14585 antibody, MDS018 antibody, MGC102190 antibody, Phosphopantothenoylcysteine decarboxylase antibody, PPC-DC antibody, ppcdc antibody, RGD1306267 antibody

UniProt: [Q96CD2](#)

Pathways: [Ribonucleoside Biosynthetic Process](#)

## Application Details

Application Notes: Recommended dilution: IHC:1:500-1:1000, IF:1:50-1:200,

Restrictions: For Research Use only

## Handling

Format: Liquid

Buffer: Preservative: 0.03 % Proclin 300  
Constituents: 50 % Glycerol, 0.01M PBS, pH 7.4

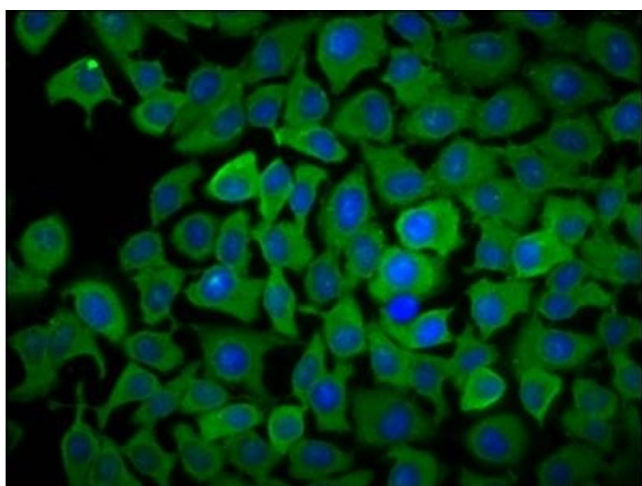
Preservative: ProClin

Precaution of Use: This product contains ProClin: a POISONOUS AND HAZARDOUS SUBSTANCE which should be handled by trained staff only.

Storage: -20 °C,-80 °C

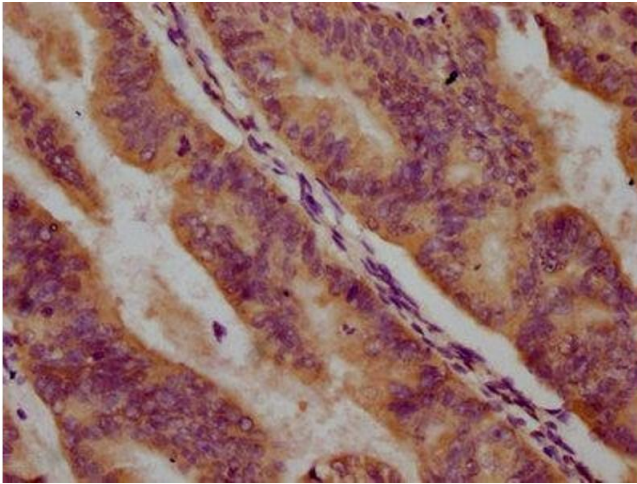
Storage Comment: Upon receipt, store at -20°C or -80°C. Avoid repeated freeze.

## Images



### Immunofluorescence

**Image 1.** Immunofluorescence staining of A549 cells with ABIN7163387 at 1:166, counter-stained with DAPI. The cells were fixed in 4% formaldehyde, permeabilized using 0.2% Triton X-100 and blocked in 10% normal Goat Serum. The cells were then incubated with the antibody overnight at 4°C. The secondary antibody was Alexa Fluor 488-conjugated AffiniPure Goat Anti-Rabbit IgG(H+L).



#### Immunohistochemistry

**Image 2.** IHC image of ABIN7163387 diluted at 1:500 and staining in paraffin-embedded human endometrial cancer performed on a Leica Bond™ system. After dewaxing and hydration, antigen retrieval was mediated by high pressure in a citrate buffer (pH 6.0). Section was blocked with 10% normal goat serum 30min at RT. Then primary antibody (1% BSA) was incubated at 4°C overnight. The primary is detected by a biotinylated secondary antibody and visualized using an HRP conjugated SP system.