

Datasheet for ABIN7163404

anti-PHKA1 antibody (Regulatory Subunit A)[Go to Product page](#)**1** Image

Overview

Quantity:	100 µg
Target:	PHKA1
Binding Specificity:	AA 555-688, Regulatory Subunit A
Reactivity:	Human
Host:	Rabbit
Clonality:	Polyclonal
Conjugate:	This PHKA1 antibody is un-conjugated
Application:	ELISA, Immunohistochemistry (IHC)

Product Details

Immunogen:	Recombinant Human Phosphorylase b kinase regulatory subunit alpha, skeletal muscle isoform protein (555-688AA)
Isotype:	IgG
Cross-Reactivity:	Human
Purification:	>95%, Protein G purified

Target Details

Target:	PHKA1
Alternative Name:	PHKA1 (PHKA1 Products)
Background:	Background: Phosphorylase b kinase catalyzes the phosphorylation of serine in certain

Target Details

substrates, including troponin I. The alpha chain may bind calmodulin.

Aliases: 5330411D17 antibody, 9830108K24Rik antibody, kinase PHKA1 antibody, KPB1 antibody, KPB1_HUMAN antibody, MGC132604 antibody, Pcyt1b antibody, PHKA antibody, PHKA1 antibody, Phosphorylase b kinase regulatory subunit alpha antibody, Phosphorylase b kinase regulatory subunit alpha, skeletal muscle isoform antibody, Phosphorylase kinase alpha M subunit antibody, phosphorylase kinase, alpha 1 (muscle) antibody, RP23 210E20.1 antibody, skeletal muscle isoform antibody

UniProt: [P46020](#)

Pathways: [Cellular Glucan Metabolic Process](#)

Application Details

Application Notes: Recommended dilution: IHC:1:500-1:1000,

Restrictions: For Research Use only

Handling

Format: Liquid

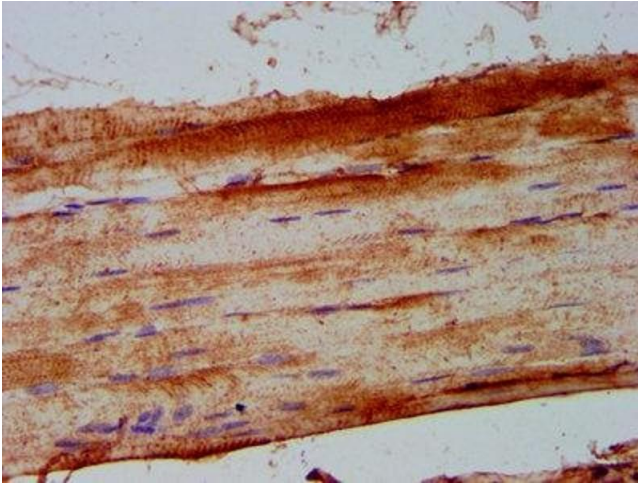
Buffer: Preservative: 0.03 % Proclin 300
Constituents: 50 % Glycerol, 0.01M PBS, pH 7.4

Preservative: ProClin

Precaution of Use: This product contains ProClin: a POISONOUS AND HAZARDOUS SUBSTANCE which should be handled by trained staff only.

Storage: -20 °C,-80 °C

Storage Comment: Upon receipt, store at -20°C or -80°C. Avoid repeated freeze.



Immunohistochemistry

Image 1. IHC image of ABIN7163404 diluted at 1:500 and staining in paraffin-embedded human skeletal muscle tissue performed on a Leica Bond™ system. After dewaxing and hydration, antigen retrieval was mediated by high pressure in a citrate buffer (pH 6.0). Section was blocked with 10% normal goat serum 30min at RT. Then primary antibody (1% BSA) was incubated at 4°C overnight. The primary is detected by a biotinylated secondary antibody and visualized using an HRP conjugated SP system.