



Datasheet for ABIN7163445
anti-PEDF antibody (AA 128-418)



[Go to Product page](#)

1 Image

Overview

| | |
|----------------------|-------------------------------------|
| Quantity: | 100 µL |
| Target: | PEDF (SERPINF1) |
| Binding Specificity: | AA 128-418 |
| Reactivity: | Human |
| Host: | Rabbit |
| Clonality: | Polyclonal |
| Conjugate: | This PEDF antibody is un-conjugated |
| Application: | Immunohistochemistry (IHC), ELISA |

Product Details

| | |
|-------------------|-------------------------------------------------------------------------|
| Immunogen: | Recombinant Human Pigment epithelium-derived factor protein (128-418AA) |
| Isotype: | IgG |
| Cross-Reactivity: | Human |
| Purification: | Antigen Affinity Purified |

Target Details

| | |
|-------------------|------------------------------------------------------------------------------------------------------------------------------------------------------------------------------------------------|
| Target: | PEDF (SERPINF1) |
| Alternative Name: | SERPINF1 (SERPINF1 Products) |
| Background: | Background: Neurotrophic protein, induces extensive neuronal differentiation in retinoblastoma cells. Potent inhibitor of angiogenesis. As it does not undergo the S (stressed) to R (relaxed) |

Target Details

conformational transition characteristic of active serpins, it exhibits no serine protease inhibitory activity.

Aliases: Cell proliferation-inducing gene 35 protein antibody, EPC 1 antibody, EPC-1 antibody, EPC1 antibody, OI12 antibody, OI6 antibody, PEDF antibody, PEDF_HUMAN antibody, PIG 35 antibody, PIG35 antibody, Pigment epithelium derived factor antibody, Pigment epithelium-derived factor antibody, Proliferation inducing protein 35 antibody, Serine (or cysteine) proteinase inhibitor antibody, serine (or cysteine) proteinase inhibitor, clade F (alpha-2 antiplasmin, pigment epithelium derived factor), member 1 antibody, Serpin F1 antibody, Serpin family F member 1 antibody, Serpin peptidase inhibitor antibody, Serpin peptidase inhibitor clade F member 1 antibody, serpin peptidase inhibitor, clade F (alpha-2 antiplasmin, pigment epithelium derived factor), member 1 antibody, SERPINF 1 antibody, Serpinf1 antibody

UniProt: [P36955](#)

Application Details

Application Notes: Recommended dilution: IHC:1:20-1:200,

Restrictions: For Research Use only

Handling

Format: Liquid

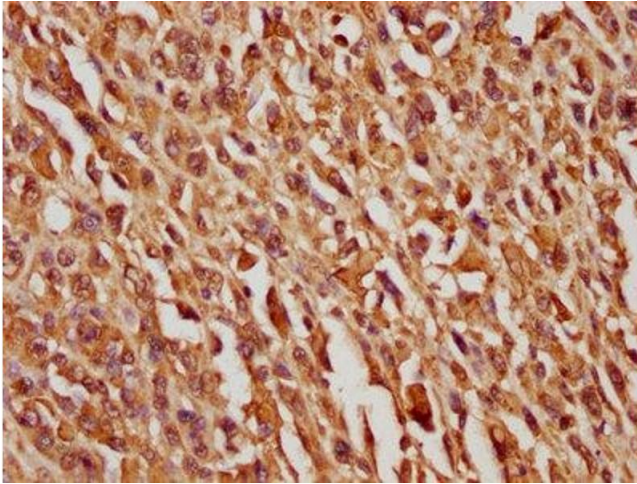
Buffer: Preservative: 0.03 % Proclin 300
Constituents: 50 % Glycerol, 0.01M PBS, pH 7.4

Preservative: ProClin

Precaution of Use: This product contains ProClin: a POISONOUS AND HAZARDOUS SUBSTANCE which should be handled by trained staff only.

Storage: -20 °C,-80 °C

Storage Comment: Upon receipt, store at -20°C or -80°C. Avoid repeated freeze.



Immunohistochemistry

Image 1. IHC image of ABIN7163445 diluted at 1:100 and staining in paraffin-embedded human melanoma cancer performed on a Leica Bond™ system. After dewaxing and hydration, antigen retrieval was mediated by high pressure in a citrate buffer (pH 6.0). Section was blocked with 10 % normal goat serum 30 min at RT. Then primary antibody (1 % BSA) was incubated at 4 °C overnight. The primary is detected by a biotinylated secondary antibody and visualized using an HRP conjugated SP system.