

Datasheet for ABIN7163449  
**anti-PIH1D1 antibody (AA 1-290)**[Go to Product page](#)

## 4 Images

## Overview

Quantity:	100 µg
Target:	PIH1D1
Binding Specificity:	AA 1-290
Reactivity:	Human
Host:	Rabbit
Clonality:	Polyclonal
Conjugate:	This PIH1D1 antibody is un-conjugated
Application:	Western Blotting (WB), ELISA, Immunohistochemistry (IHC), Immunofluorescence (IF), Immunoprecipitation (IP)

## Product Details

Immunogen:	Recombinant Human PIH1 domain-containing protein 1 protein (1-290AA)
Isotype:	IgG
Cross-Reactivity:	Human
Purification:	>95%, Protein G purified

## Target Details

Target:	PIH1D1
Alternative Name:	PIH1D1 ( <a href="#">PIH1D1 Products</a> )
Background:	Background: Involved in the assembly of C/D box small nucleolar ribonucleoprotein (snoRNP)

## Target Details

particles (PubMed:17636026). Recruits the SWI/SNF complex to the core promoter of rRNA genes and enhances pre-rRNA transcription (PubMed:22368283, PubMed:24036451). Mediates interaction of TEO2 with the R2TP complex which is necessary for the stability of MTOR and SMG1 (PubMed:20864032). Positively regulates the assembly and activity of the mTORC1 complex (PubMed:24036451).

Aliases: NOP17 antibody, Nucleolar protein 17 homolog antibody, PIH1 domain containing 1 antibody, PIH1 domain containing protein 1 antibody, PIH1 domain-containing protein 1 antibody, PIH1D1 antibody, PIHD1\_HUMAN antibody

UniProt: [Q9NWS0](#)

## Application Details

Application Notes: Recommended dilution: WB:1:500-1:5000, IHC:1:20-1:200, IF:1:50-1:500, IP:1:200-1:2000,

Restrictions: For Research Use only

## Handling

Format: Liquid

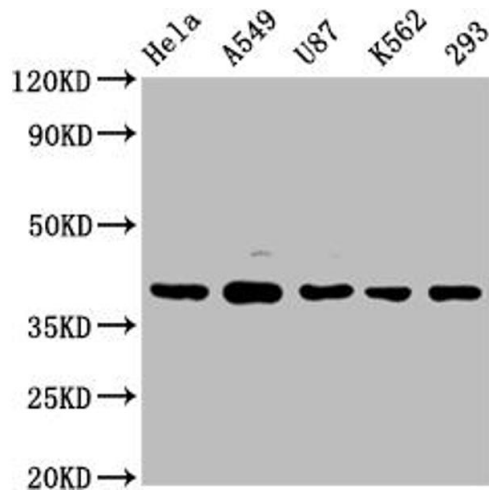
Buffer: Preservative: 0.03 % Proclin 300  
Constituents: 50 % Glycerol, 0.01M PBS, PH 7.4

Preservative: ProClin

Precaution of Use: This product contains ProClin: a POISONOUS AND HAZARDOUS SUBSTANCE which should be handled by trained staff only.

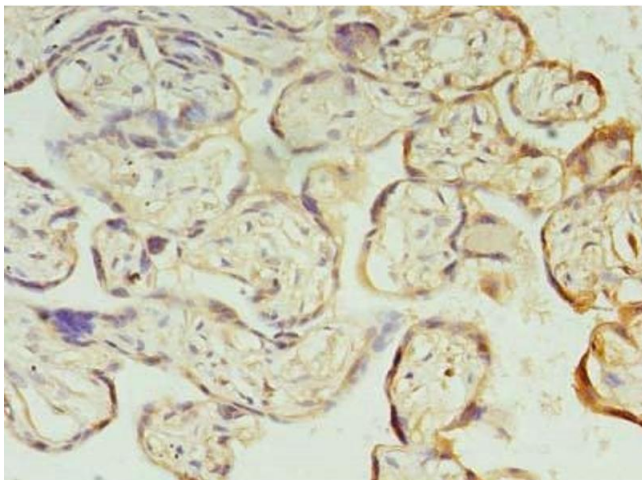
Storage: -20 °C,-80 °C

Storage Comment: Upon receipt, store at -20°C or -80°C. Avoid repeated freeze.



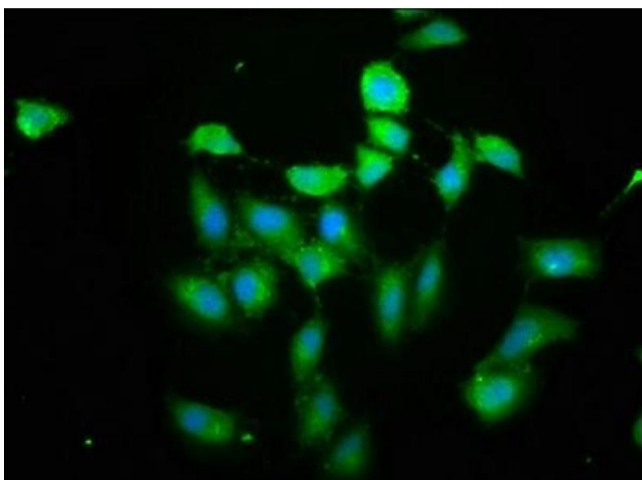
#### Western Blotting

**Image 1.** Western Blot Positive WB detected in: HeLa whole cell lysate, A549 whole cell lysate, U87 whole cell lysate, K562 whole cell lysate, 293 whole cell lysate All lanes: PIH1D1 antibody at 1:2000 Secondary Goat polyclonal to rabbit IgG at 1/50000 dilution Predicted band size: 33, 20, 22 kDa Observed band size: 39 kDa



#### Immunohistochemistry

**Image 2.** Immunohistochemistry of paraffin-embedded human placenta tissue using ABIN7163449 at dilution of 1:100



#### Immunofluorescence

**Image 3.** Immunofluorescence staining of HeLa cells cells with ABIN7163449 at 1: 200, counter-stained with DAPI. The cells were fixed in 4% formaldehyde, permeabilized tissue using 0.2% Triton X-100 and blocked in 10% normal Goat Serum. The cells were then incubated with the antibody overnight at 4°C. The secondary antibody was Alexa Fluor 488-conjugated AffiniPure Goat Anti-Rabbit IgG(H+L) .

Please check the [product details page](#) for more images. Overall 4 images are available for ABIN7163449.