



[Go to Product page](#)

Datasheet for ABIN7163487  
**anti-PLAC8 antibody (AA 1-110)**

3 Images

### Overview

Quantity:	100 µg
Target:	PLAC8
Binding Specificity:	AA 1-110
Reactivity:	Human
Host:	Rabbit
Clonality:	Polyclonal
Conjugate:	This PLAC8 antibody is un-conjugated
Application:	ELISA, Immunohistochemistry (IHC), Immunofluorescence (IF)

### Product Details

Immunogen:	Recombinant Human Placenta-specific gene 8 protein (1-110AA)
Isotype:	IgG
Cross-Reactivity:	Human
Purification:	>95%, Protein G purified

### Target Details

Target:	PLAC8
Alternative Name:	PLAC8 ( <a href="#">PLAC8 Products</a> )
Background:	PLAC8 antibody, BM-004 antibody, Placenta-specific gene 8 protein antibody, Protein C15 antibody

## Target Details

---

UniProt: [Q9NZF1](#)

Pathways: [Brown Fat Cell Differentiation](#)

## Application Details

---

Application Notes: Recommended dilution: IHC:1:20-1:200, IF:1:50-1:200,

Restrictions: For Research Use only

## Handling

---

Format: Liquid

Buffer: Preservative: 0.03 % Proclin 300  
Constituents: 50 % Glycerol, 0.01M PBS, PH 7.4

Preservative: ProClin

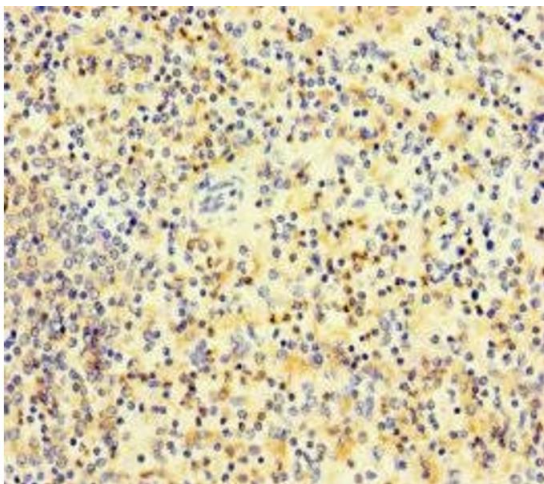
Precaution of Use: This product contains ProClin: a POISONOUS AND HAZARDOUS SUBSTANCE which should be handled by trained staff only.

Storage: -20 °C,-80 °C

Storage Comment: Upon receipt, store at -20°C or -80°C. Avoid repeated freeze.

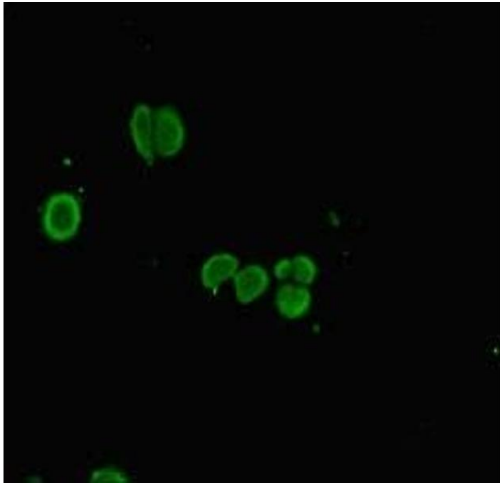
## Images

---



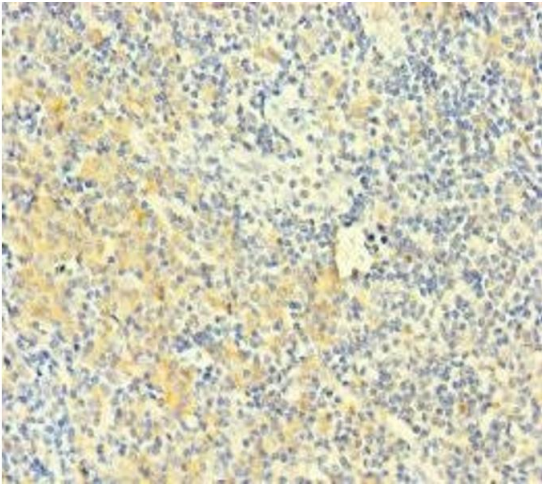
### Immunohistochemistry

**Image 1.** Immunohistochemistry of paraffin-embedded human spleen tissue using ABIN7163487 at dilution of 1:100



### Immunofluorescence

**Image 2.** Immunofluorescent analysis of HepG2 cells using ABIN7163487 at dilution of 1:100 and Alexa Fluor 488-conjugated AffiniPure Goat Anti-Rabbit IgG(H+L)



### Immunohistochemistry

**Image 3.** Immunohistochemistry of paraffin-embedded human tonsil tissue using ABIN7163487 at dilution of 1:100