

Datasheet for ABIN7163520
anti-ATP2B4 antibody (AA 281-345)[Go to Product page](#)

3 Images

Overview

Quantity:	100 µg
Target:	ATP2B4
Binding Specificity:	AA 281-345
Reactivity:	Human
Host:	Rabbit
Clonality:	Polyclonal
Conjugate:	This ATP2B4 antibody is un-conjugated
Application:	ELISA, Immunofluorescence (IF), Immunohistochemistry (IHC)

Product Details

Immunogen:	Recombinant Human Plasma membrane calcium-transporting ATPase 4 protein (281-345AA)
Isotype:	IgG
Cross-Reactivity:	Human
Purification:	>95%, Protein G purified

Target Details

Target:	ATP2B4
Alternative Name:	ATP2B4 (ATP2B4 Products)
Background:	Background: Calcium/calmodulin-regulated and magnesium-dependent enzyme that catalyzes the hydrolysis of ATP coupled with the transport of calcium out of the cell (PubMed:8530416).

Target Details

By regulating sperm cell calcium homeostasis, may play a role in sperm motility (By similarity).

Aliases: AT2B4_HUMAN antibody, ATP2B2 antibody, Atp2b4 antibody, ATPase Ca++ transporting plasma membrane 4 antibody, Cation transporting ATPase antibody, DKFZp686G08106 antibody, DKFZp686M088 antibody, Matrix remodelling associated 1 antibody, Matrix remodelling associated protein 1 antibody, Matrix-modeling-associated protein 1 antibody, MXRA 1 antibody, MXRA1 antibody, OTTHUMP00000034088 antibody, OTTHUMP00000034089 antibody, Plasma membrane calcium ATPase 4 antibody, Plasma membrane calcium ATPase isoform 4 antibody, Plasma membrane calcium pump isoform 4 antibody, Plasma membrane calcium transporting ATPase 4 antibody, Plasma membrane calcium-transporting ATPase 4 antibody, PMCA 4 antibody, PMCA4 antibody, PMCA4b antibody, PMCA4x antibody, Sarcolemmal calcium pump antibody

UniProt: [P23634](#)

Pathways: [Ribonucleoside Biosynthetic Process](#)

Application Details

Application Notes: Recommended dilution: IHC:1:20-1:200, IF:1:20-1:200,

Restrictions: For Research Use only

Handling

Format: Liquid

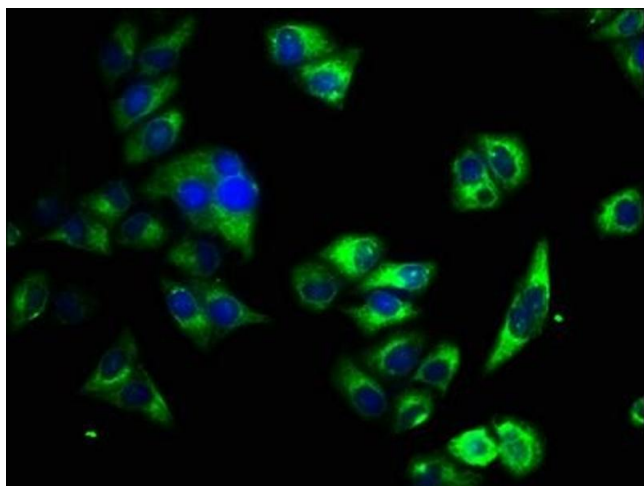
Buffer: Preservative: 0.03 % Proclin 300
Constituents: 50 % Glycerol, 0.01M PBS, pH 7.4

Preservative: ProClin

Precaution of Use: This product contains ProClin: a POISONOUS AND HAZARDOUS SUBSTANCE which should be handled by trained staff only.

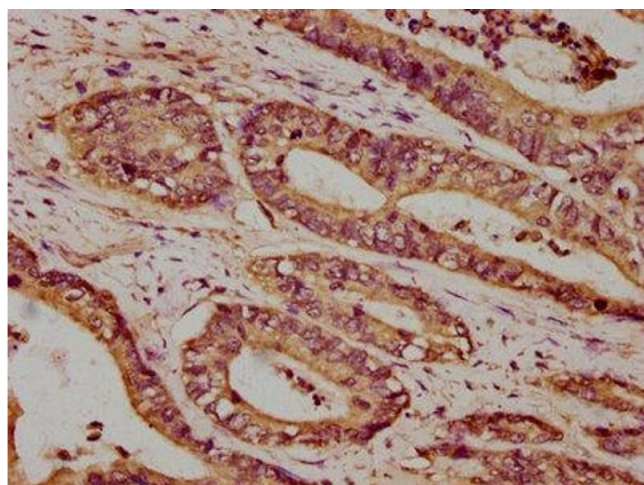
Storage: -20 °C, -80 °C

Storage Comment: Upon receipt, store at -20°C or -80°C. Avoid repeated freeze.



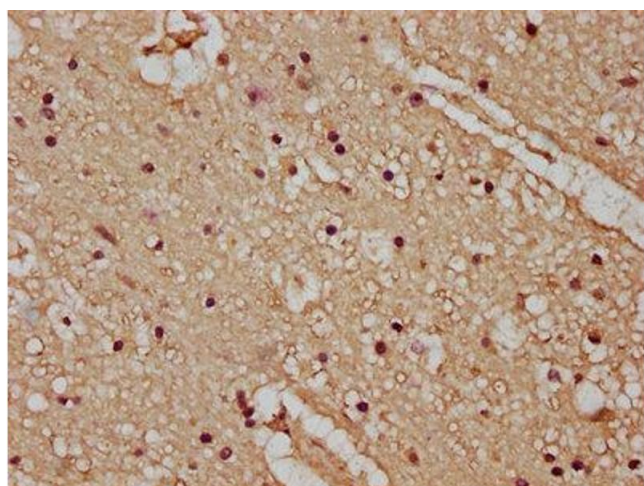
Immunofluorescence

Image 1. Immunofluorescence staining of HeLa cells with ABIN7163520 at 1:33, counter-stained with DAPI. The cells were fixed in 4% formaldehyde, permeabilized using 0.2% Triton X-100 and blocked in 10% normal Goat Serum. The cells were then incubated with the antibody overnight at 4°C. The secondary antibody was Alexa Fluor 488-conjugated AffiniPure Goat Anti-Rabbit IgG(H+L).



Immunohistochemistry

Image 2. IHC image of ABIN7163520 diluted at 1:100 and staining in paraffin-embedded human colon cancer performed on a Leica Bond™ system. After dewaxing and hydration, antigen retrieval was mediated by high pressure in a citrate buffer (pH 6.0). Section was blocked with 10% normal goat serum 30min at RT. Then primary antibody (1% BSA) was incubated at 4°C overnight. The primary is detected by a biotinylated secondary antibody and visualized using an HRP conjugated SP system.



Immunohistochemistry

Image 3. IHC image of ABIN7163520 diluted at 1:100 and staining in paraffin-embedded human brain tissue performed on a Leica Bond™ system. After dewaxing and hydration, antigen retrieval was mediated by high pressure in a citrate buffer (pH 6.0). Section was blocked with 10% normal goat serum 30min at RT. Then primary antibody (1% BSA) was incubated at 4°C overnight. The primary is detected by a biotinylated secondary antibody and visualized using an HRP conjugated SP system.