



[Go to Product page](#)

Datasheet for ABIN7163524
anti-SERPING1 antibody (AA 23-300)

3 Images

Overview

Quantity:	100 µg
Target:	SERPING1
Binding Specificity:	AA 23-300
Reactivity:	Human
Host:	Rabbit
Clonality:	Polyclonal
Conjugate:	This SERPING1 antibody is un-conjugated
Application:	Western Blotting (WB), Immunohistochemistry (IHC), ELISA, Immunofluorescence (IF)

Product Details

Immunogen:	Recombinant Human Plasma protease C1 inhibitor protein (23-300AA)
Isotype:	IgG
Cross-Reactivity:	Human, Rat
Purification:	>95%, Protein G purified

Target Details

Target:	SERPING1
Alternative Name:	SERPING1 (SERPING1 Products)
Background:	Background: Activation of the C1 complex is under control of the C1-inhibitor. It forms a proteolytically inactive stoichiometric complex with the C1r or C1s proteases. May play a

Target Details

potentially crucial role in regulating important physiological pathways including complement activation, blood coagulation, fibrinolysis and the generation of kinins. Very efficient inhibitor of FXIIa. Inhibits chymotrypsin and kallikrein.

Aliases: C1 esterase inhibitor antibody, C1 Inh antibody, C1 inhibiting factor antibody, C1 inhibitor antibody, C1-inhibiting factor antibody, C1IN antibody, C1Inh antibody, C1NH antibody, complement component 1 inhibitor antibody, esterase inhibitor antibody, HAE1 antibody, HAE2 antibody, IC1_HUMAN antibody, Plasma protease C1 inhibitor antibody, Serine (or cysteine) proteinase inhibitor clade G member 1 antibody, serine/cysteine proteinase inhibitor clade G member 1 antibody, Serpin G1 antibody, serpin peptidase inhibitor, clade G (C1 inhibitor), member 1 antibody, SERPING1 antibody

UniProt: [P05155](#)

Pathways: [Complement System](#)

Application Details

Application Notes: Recommended dilution: WB:1:200-1:5000, IHC:1:20-1:200, IF:1:50-1:200,

Restrictions: For Research Use only

Handling

Format: Liquid

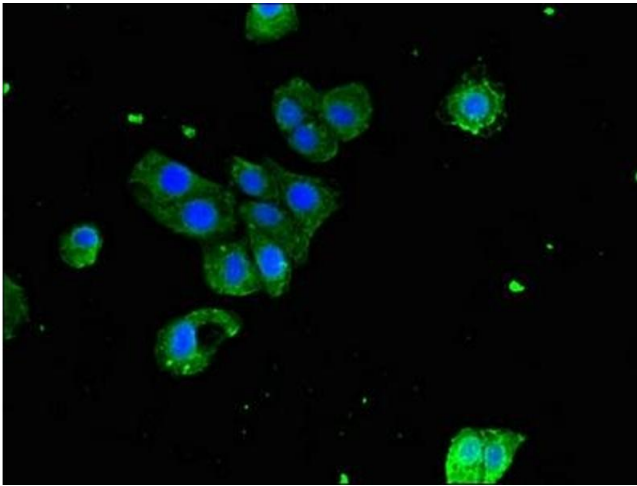
Buffer: Preservative: 0.03 % Proclin 300
Constituents: 50 % Glycerol, 0.01M PBS, pH 7.4

Preservative: ProClin

Precaution of Use: This product contains ProClin: a POISONOUS AND HAZARDOUS SUBSTANCE which should be handled by trained staff only.

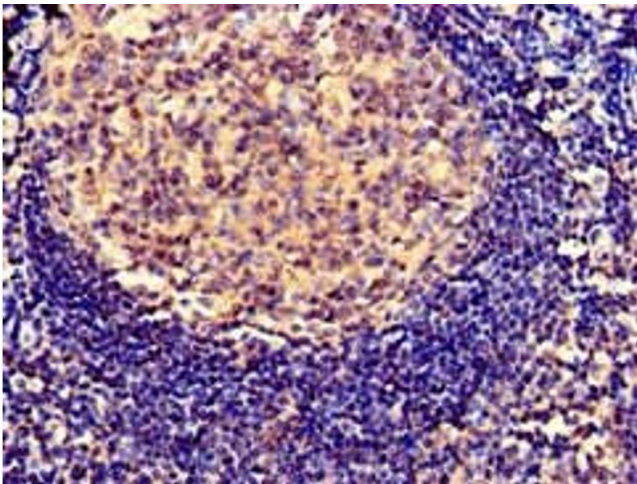
Storage: -20 °C,-80 °C

Storage Comment: Upon receipt, store at -20°C or -80°C. Avoid repeated freeze.



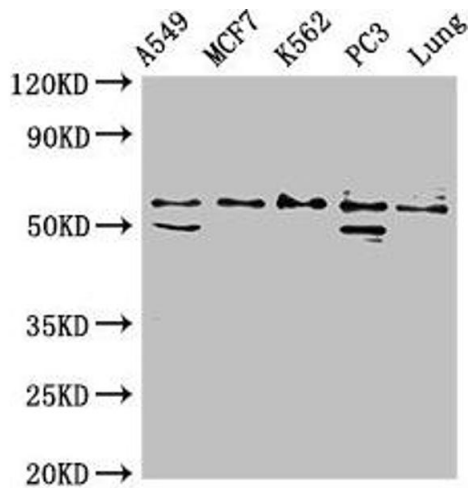
Immunofluorescence

Image 1. Immunofluorescent analysis of HepG2 cells using ABIN7163524 at dilution of 1:100 and Alexa Fluor 488-conjugated AffiniPure Goat Anti-Rabbit IgG(H+L)



Immunohistochemistry

Image 2. Immunohistochemistry of paraffin-embedded human tonsil tissue using ABIN7163524 at dilution of 1:100



Western Blotting

Image 3. Western Blot Positive WB detected in: A549 whole cell lysate, MCF-7 whole cell lysate, K562 whole cell lysate, PC-3 whole cell lysate, Rat lung tissue All lanes: SERPING1 antibody at 2 µg/mL Secondary Goat polyclonal to rabbit IgG at 1/50000 dilution Predicted band size: 56, 50 kDa Observed band size: 56 kDa