

Datasheet for ABIN7163532  
**anti-PAI1 antibody (AA 24-398)**[Go to Product page](#)

## 3 Images

## Overview

Quantity:	100 µg
Target:	PAI1 (SERPINE1)
Binding Specificity:	AA 24-398
Reactivity:	Human
Host:	Rabbit
Clonality:	Polyclonal
Conjugate:	This PAI1 antibody is un-conjugated
Application:	Western Blotting (WB), ELISA, Immunohistochemistry (IHC), Immunofluorescence (IF)

## Product Details

Immunogen:	Recombinant Human Plasminogen activator inhibitor 1 protein (24-398AA)
Isotype:	IgG
Cross-Reactivity:	Human
Purification:	>95%, Protein G purified

## Target Details

Target:	PAI1 (SERPINE1)
Alternative Name:	SERPINE1 ( <a href="#">SERPINE1 Products</a> )
Background:	Background: Serine protease inhibitor. Inhibits TMPRSS7 (PubMed:15853774). Is a primary inhibitor of tissue-type plasminogen activator (PLAT) and urokinase-type plasminogen activator

## Target Details

(PLAU). As PLAT inhibitor, it is required for fibrinolysis down-regulation and is responsible for the controlled degradation of blood clots (PubMed:8481516, PubMed:9207454, PubMed:17912461). As PLAU inhibitor, it is involved in the regulation of cell adhesion and spreading (PubMed:9175705). Acts as a regulator of cell migration, independently of its role as protease inhibitor (PubMed:15001579, PubMed:9168821). It is required for stimulation of keratinocyte migration during cutaneous injury repair (PubMed:18386027). It is involved in cellular and replicative senescence (PubMed:16862142). Plays a role in alveolar type 2 cells senescence in the lung (By similarity). Is involved in the regulation of cementogenic differentiation of periodontal ligament stem cells, and regulates odontoblast differentiation and dentin formation during odontogenesis (PubMed:25808697, PubMed:27046084).

Aliases: Clade E antibody, Endothelial plasminogen activator inhibitor antibody, Nexin antibody, Nexin plasminogen activator inhibitor type 1 antibody, PAI 1 antibody, PAI antibody, PAI-1 antibody, PAI1\_HUMAN antibody, PLANH1 antibody, Plasminogen activator inhibitor 1 antibody, Plasminogen activator inhibitor type 1 antibody, Serine (or cysteine) proteinase inhibitor antibody, Serine (or cysteine) proteinase inhibitor clade E (nexin plasminogen activator inhibitor type 1) member 1 antibody, Serine proteinase inhibitor clade E member 1 antibody, serpin antibody, Serpin E1 antibody, Serpin peptidase inhibitor clade E (nexin plasminogen activator inhibitor type 1) member 1 antibody, Serpin peptidase inhibitor clade E antibody, Serpine 1 antibody, SERPINE1 antibody

UniProt: [P05121](#)

Pathways: [p53 Signaling](#), [Cellular Response to Molecule of Bacterial Origin](#), [Carbohydrate Homeostasis](#), [Autophagy](#), [Smooth Muscle Cell Migration](#)

## Application Details

Application Notes: Recommended dilution: WB:1:500-1:5000, IHC:1:20-1:200, IF:1:50-1:200,

Restrictions: For Research Use only

## Handling

Format: Liquid

Buffer: Preservative: 0.03 % Proclin 300  
Constituents: 50 % Glycerol, 0.01M PBS, PH 7.4

Preservative: ProClin

Precaution of Use: This product contains ProClin: a POISONOUS AND HAZARDOUS SUBSTANCE which should be

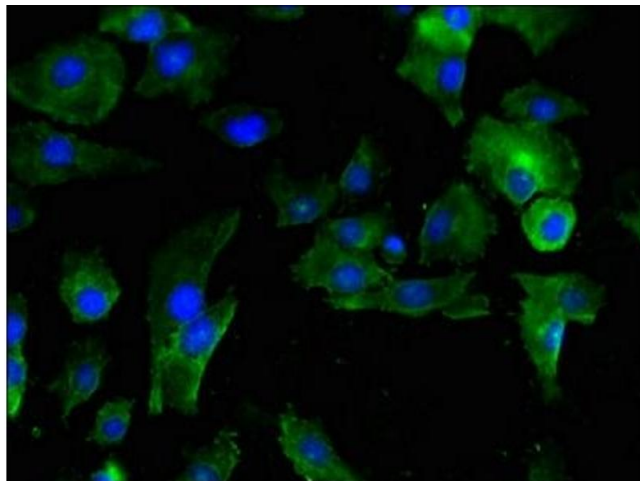
## Handling

handled by trained staff only.

Storage: -20 °C,-80 °C

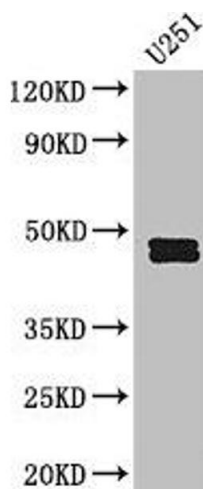
Storage Comment: Upon receipt, store at -20°C or -80°C. Avoid repeated freeze.

## Images



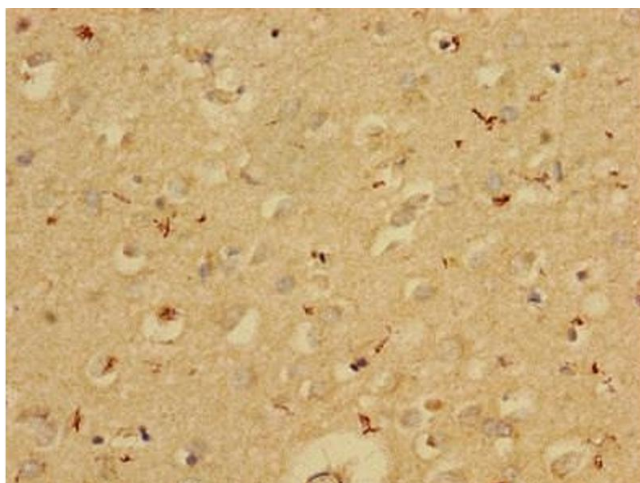
### Immunofluorescence

**Image 1.** Immunofluorescent analysis of U251 cells using ABIN7163532 at dilution of 1:100 and Alexa Fluor 488-conjugated AffiniPure Goat Anti-Rabbit IgG(H+L)



### Western Blotting

**Image 2.** Western Blot Positive WB detected in: U251 whole cell lysate All lanes: SERPINE1 antibody at 2.5 µg/mL Secondary Goat polyclonal to rabbit IgG at 1/50000 dilution Predicted band size: 46, 44 kDa Observed band size: 46, 44 kDa



### Immunohistochemistry

**Image 3.** Immunohistochemistry of paraffin-embedded human brain tissue using ABIN7163532 at dilution of 1:100