

Datasheet for ABIN7163536  
**anti-SERPINB2 antibody (AA 293-389)**[Go to Product page](#)

## 2 Images

## Overview

Quantity:	100 µg
Target:	SERPINB2
Binding Specificity:	AA 293-389
Reactivity:	Human
Host:	Rabbit
Clonality:	Polyclonal
Conjugate:	This SERPINB2 antibody is un-conjugated
Application:	Western Blotting (WB), Immunohistochemistry (IHC), ELISA

## Product Details

Immunogen:	Recombinant Human Plasminogen activator inhibitor 2 protein (293-389AA)
Isotype:	IgG
Cross-Reactivity:	Human
Purification:	>95%, Protein G purified

## Target Details

Target:	SERPINB2
Alternative Name:	SERPINB2 ( <a href="#">SERPINB2 Products</a> )
Target Type:	Amino Acid
Background:	Background: Inhibits urokinase-type plasminogen activator. The monocyte derived PAI-2 is

## Target Details

distinct from the endothelial cell-derived PAI-1.

Aliases: HsT1201 antibody, Monocyte Arg serpin antibody, Monocyte Arg-serpin antibody, Monocyte Arginine-serpin antibody, Monocyte-derived plasminogen activator inhibitor antibody, PAI antibody, PAI-2 antibody, PAI2 antibody, PAI2\_HUMAN antibody, Placental plasminogen activator inhibitor antibody, PLANH2 antibody, Plasminogen activator inhibitor 2 antibody, plasminogen activator inhibitor, type 2 antibody, plasminogen activator inhibitor, type II (arginine-serpin) antibody, serine (or cysteine) proteinase inhibitor, clade B (ovalbumin), member 2 antibody, Serpin B2 antibody, serpin peptidase inhibitor, clade B (ovalbumin), member 2 antibody, Serpinb2 antibody, Urokinase inhibitor antibody

UniProt: [P05120](#)

Pathways: [Autophagy](#)

## Application Details

Application Notes: Recommended dilution: WB:1:500-1:5000, IHC:1:200-1:500,

Restrictions: For Research Use only

## Handling

Format: Liquid

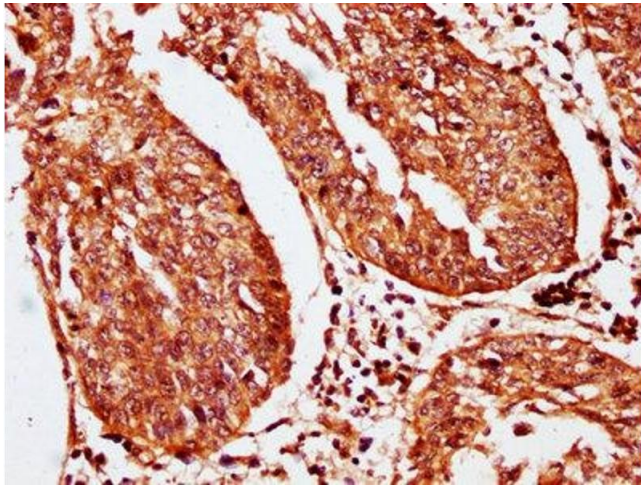
Buffer: Preservative: 0.03 % Proclin 300  
Constituents: 50 % Glycerol, 0.01M PBS, pH 7.4

Preservative: ProClin

Precaution of Use: This product contains ProClin: a POISONOUS AND HAZARDOUS SUBSTANCE which should be handled by trained staff only.

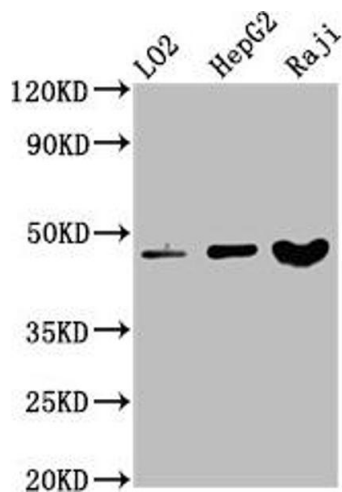
Storage: -20 °C,-80 °C

Storage Comment: Upon receipt, store at -20°C or -80°C. Avoid repeated freeze.



#### Immunohistochemistry

**Image 1.** IHC image of ABIN7163536 diluted at 1:200 and staining in paraffin-embedded human cervical cancer performed on a Leica Bond™ system. After dewaxing and hydration, antigen retrieval was mediated by high pressure in a citrate buffer (pH 6.0). Section was blocked with 10% normal goat serum 30min at RT. Then primary antibody (1% BSA) was incubated at 4°C overnight. The primary is detected by a biotinylated secondary antibody and visualized using an HRP conjugated SP system.



#### Western Blotting

**Image 2.** Western Blot Positive WB detected in: LO2 whole cell lysate, HepG2 whole cell lysate, Raji whole cell lysate All lanes: SERPINB2 antibody at 3.4 µg/mL Secondary Goat polyclonal to rabbit IgG at 1/50000 dilution Predicted band size: 47 kDa Observed band size: 47 kDa