

Datasheet for ABIN7163540  
**anti-PLG antibody (AA 103-343)**



[Go to Product page](#)

1 Image

## Overview

Quantity:	100 µL
Target:	PLG
Binding Specificity:	AA 103-343
Reactivity:	Human
Host:	Rabbit
Clonality:	Polyclonal
Conjugate:	This PLG antibody is un-conjugated
Application:	ELISA, Immunohistochemistry (IHC)

## Product Details

Immunogen:	Recombinant Human Plasminogen protein (103-343AA)
Isotype:	IgG
Cross-Reactivity:	Human
Purification:	>95%, Protein G purified

## Target Details

Target:	PLG
Alternative Name:	PLG ( <a href="#">PLG Products</a> )
Background:	Background: Plasmin dissolves the fibrin of blood clots and acts as a proteolytic factor in a variety of other processes including embryonic development, tissue remodeling, tumor

## Target Details

---

invasion, and inflammation. In ovulation, weakens the walls of the Graafian follicle. It activates the urokinase-type plasminogen activator, collagenases and several complement zymogens, such as C1 and C5. Cleavage of fibronectin and laminin leads to cell detachment and apoptosis. Also cleaves fibrin, thrombospondin and von Willebrand factor. Its role in tissue remodeling and tumor invasion may be modulated by CSPG4. Binds to cells.

Aliases: Plasmin antibody, Plasmin heavy chain A antibody, Plasmin light chain B antibody, Plasminogen antibody, PLG antibody, PLMN\_HUMAN antibody

---

UniProt: [P00747](#)

---

Pathways: [Complement System](#), [Lipid Metabolism](#)

## Application Details

---

Application Notes: Recommended dilution: IHC:1:1000-1:2000,

---

Restrictions: For Research Use only

## Handling

---

Format: Liquid

---

Buffer: Preservative: 0.03 % Proclin 300  
Constituents: 50 % Glycerol, 0.01M PBS, pH 7.4

---

Preservative: ProClin

---

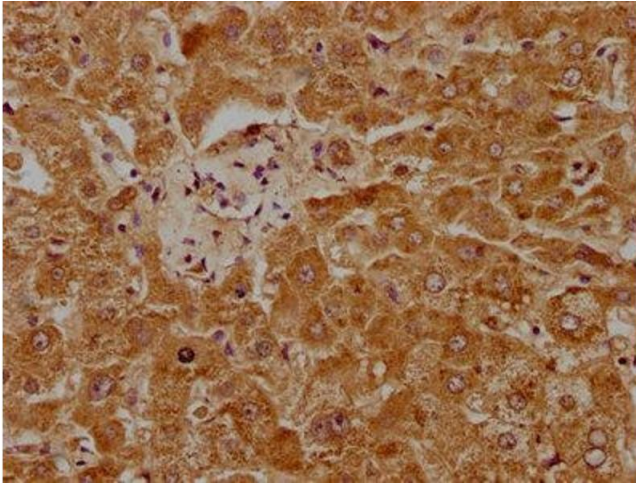
Precaution of Use: This product contains ProClin: a POISONOUS AND HAZARDOUS SUBSTANCE which should be handled by trained staff only.

---

Storage: -20 °C,-80 °C

---

Storage Comment: Upon receipt, store at -20°C or -80°C. Avoid repeated freeze.



### Immunohistochemistry

**Image 1.** IHC image of ABIN7163540 diluted at 1:1000 and staining in paraffin-embedded human liver tissue performed on a Leica Bond™ system. After dewaxing and hydration, antigen retrieval was mediated by high pressure in a citrate buffer (pH 6.0). Section was blocked with 10 % normal goat serum 30 min at RT. Then primary antibody (1 % BSA) was incubated at 4 °C overnight. The primary is detected by a biotinylated secondary antibody and visualized using an HRP conjugated SP system.