



[Go to Product page](#)

Datasheet for ABIN7163548
anti-Plasmolipin antibody (AA 1-35)

2 Images

Overview

| | |
|----------------------|---|
| Quantity: | 100 µg |
| Target: | Plasmolipin |
| Binding Specificity: | AA 1-35 |
| Reactivity: | Human |
| Host: | Rabbit |
| Clonality: | Polyclonal |
| Conjugate: | This Plasmolipin antibody is un-conjugated |
| Application: | ELISA, Western Blotting (WB), Immunofluorescence (IF) |

Product Details

| | |
|-------------------|--|
| Immunogen: | Recombinant Human Plasmolipin protein (1-35AA) |
| Isotype: | IgG |
| Cross-Reactivity: | Human, Mouse |
| Purification: | >95%, Protein G purified |

Target Details

| | |
|-------------------|---|
| Target: | Plasmolipin |
| Alternative Name: | PLLIP (Plasmolipin Products) |
| Background: | Background: Appears to be involved in myelination. Could also participate in ion transport events as addition of plasmolipin to lipid bilayers induces the formation of ion channels, which |

Target Details

are voltage-dependent and K(+)-selective.

Aliases: PLLP antibody, PMLP antibody, TM4SF11 antibody, Plasmolipin antibody, Plasma membrane proteolipid antibody

UniProt: [Q9Y342](#)

Application Details

Application Notes: Recommended dilution: WB:1:1000-1:5000, IF:1:50-1:200,

Restrictions: For Research Use only

Handling

Format: Liquid

Buffer: Preservative: 0.03 % Proclin 300
Constituents: 50 % Glycerol, 0.01M PBS, PH 7.4

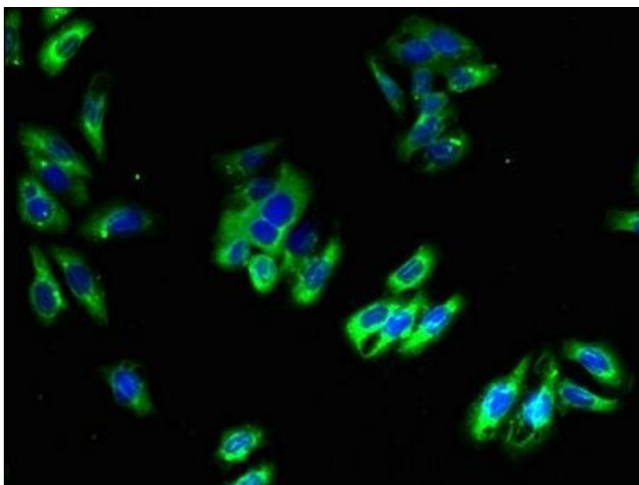
Preservative: ProClin

Precaution of Use: This product contains ProClin: a POISONOUS AND HAZARDOUS SUBSTANCE which should be handled by trained staff only.

Storage: -20 °C,-80 °C

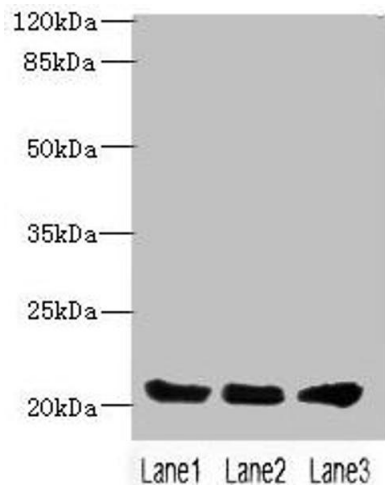
Storage Comment: Upon receipt, store at -20°C or -80°C. Avoid repeated freeze.

Images



Immunofluorescence

Image 1. Immunofluorescent analysis of HepG2 cells using ABIN7163548 at dilution of 1:100 and Alexa Fluor 488-conjugated AffiniPure Goat Anti-Rabbit IgG(H+L)



Western Blotting

Image 2. Western blot All lanes: PLLP antibody at 4 $\mu\text{g}/\text{mL}$
Lane 1: Mouse gonadal tissue Lane 2: Mouse kidney tissue
Lane 3: Mouse lung tissue Secondary Goat polyclonal to
rabbit IgG at 1/10000 dilution Predicted band size: 20 kDa
Observed band size: 20 kDa