



[Go to Product page](#)

Datasheet for ABIN7163552
anti-PLS1 antibody (AA 1-143)

5 Images

Overview

Quantity:	100 µg
Target:	PLS1
Binding Specificity:	AA 1-143
Reactivity:	Human
Host:	Rabbit
Clonality:	Polyclonal
Conjugate:	This PLS1 antibody is un-conjugated
Application:	Western Blotting (WB), ELISA, Immunohistochemistry (IHC), Immunoprecipitation (IP), Immunofluorescence (IF)

Product Details

Immunogen:	Recombinant Human Plastin-1 protein (1-143AA)
Isotype:	IgG
Cross-Reactivity:	Human
Purification:	>95%, Protein G purified

Target Details

Target:	PLS1
Alternative Name:	PLS1 (PLS1 Products)
Background:	Background: Actin-bundling protein in the absence of calcium.

Target Details

Aliases: PLS1 antibody, Plastin-1 antibody, Intestine-specific plastin antibody, I-plastin antibody

UniProt: [Q14651](#)

Application Details

Application Notes: Recommended dilution: WB:1:500-1:5000, IHC:1:200-1:500, IF:1:50-1:200, IP:1:200-1:2000,

Restrictions: For Research Use only

Handling

Format: Liquid

Buffer: Preservative: 0.03 % Proclin 300
Constituents: 50 % Glycerol, 0.01M PBS, pH 7.4

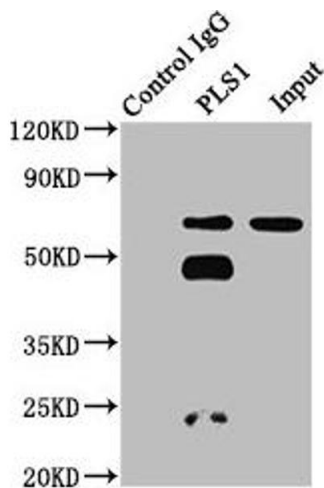
Preservative: ProClin

Precaution of Use: This product contains ProClin: a POISONOUS AND HAZARDOUS SUBSTANCE which should be handled by trained staff only.

Storage: -20 °C,-80 °C

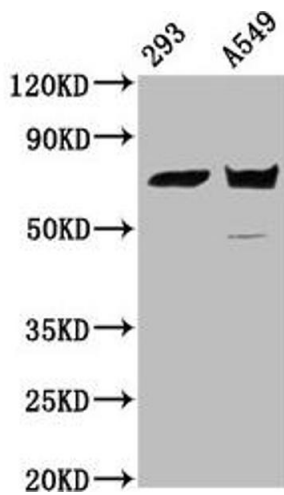
Storage Comment: Upon receipt, store at -20°C or -80°C. Avoid repeated freeze.

Images



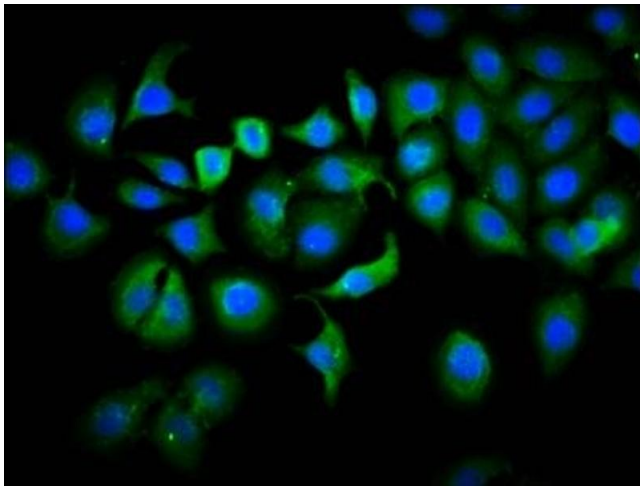
Western Blotting

Image 1. Immunoprecipitating PLS1 in 293 whole cell lysate
Lane 1: Rabbit control IgG instead of ABIN7163552 in 293 whole cell lysate. For western blotting, a HRP-conjugated Protein G antibody was used as the secondary antibody (1/2000) Lane 2: ABIN7163552 (6 µg) + 293 whole cell lysate (500 µg) Lane 3: 293 whole cell lysate (20 µg)



Western Blotting

Image 2. Western Blot Positive WB detected in: 293 whole cell lysate, A549 whole cell lysate All lanes: PLS1 antibody at 5.2 µg/mL Secondary Goat polyclonal to rabbit IgG at 1/50000 dilution Predicted band size: 71 kDa Observed band size: 71 kDa



Immunofluorescence

Image 3. Immunofluorescence staining of A549 cells with ABIN7163552 at 1:133, counter-stained with DAPI. The cells were fixed in 4% formaldehyde, permeabilized using 0.2% Triton X-100 and blocked in 10% normal Goat Serum. The cells were then incubated with the antibody overnight at 4°C. The secondary antibody was Alexa Fluor 488-conjugated AffiniPure Goat Anti-Rabbit IgG(H+L).

Please check the [product details page](#) for more images. Overall 5 images are available for ABIN7163552.