

Datasheet for ABIN7163556
anti-LCP1 antibody (AA 2-627)[Go to Product page](#)

3 Images

Overview

Quantity:	100 µg
Target:	LCP1
Binding Specificity:	AA 2-627
Reactivity:	Human
Host:	Rabbit
Clonality:	Polyclonal
Conjugate:	This LCP1 antibody is un-conjugated
Application:	Western Blotting (WB), ELISA, Immunohistochemistry (IHC), Immunoprecipitation (IP)

Product Details

Immunogen:	Recombinant Human Platin-2 protein (2-627AA)
Isotype:	IgG
Cross-Reactivity:	Human
Purification:	>95%, Protein G purified

Target Details

Target:	LCP1
Alternative Name:	LCP1 (LCP1 Products)
Background:	Background: Actin-binding protein. Plays a role in the activation of T-cells in response to costimulation through TCR/CD3 and CD2 or CD28. Modulates the cell surface expression of

Target Details

IL2RA/CD25 and CD69.

Aliases: CP64 antibody, L plastin antibody, L-plastin antibody, Larval cuticle protein 1 antibody, LC64P antibody, LCP-1 antibody, LCP1 antibody, LPL antibody, Lplastin antibody, Lymphocyte cytosolic protein 1 antibody, Plastin 2 antibody, Plastin-2 antibody, PLS2 antibody, PLSL_HUMAN antibody

UniProt: [P13796](#)

Application Details

Application Notes: Recommended dilution: WB:1:1000-1:5000, IHC:1:200-1:500, IP:1:200-1:2000,

Restrictions: For Research Use only

Handling

Format: Liquid

Buffer: Preservative: 0.03 % Proclin 300
Constituents: 50 % Glycerol, 0.01M PBS, PH 7.4

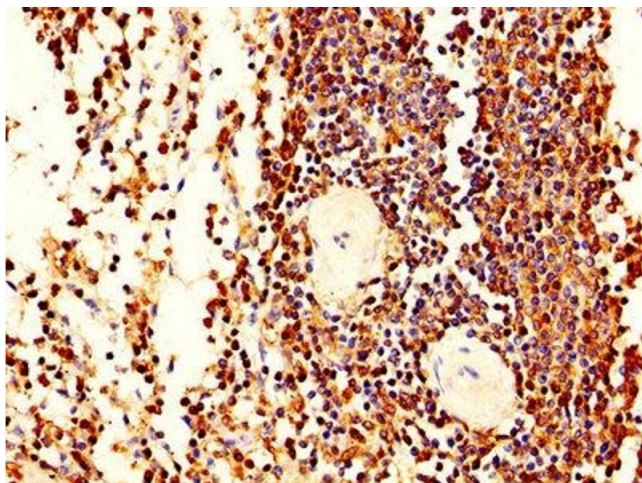
Preservative: ProClin

Precaution of Use: This product contains ProClin: a POISONOUS AND HAZARDOUS SUBSTANCE which should be handled by trained staff only.

Storage: -20 °C,-80 °C

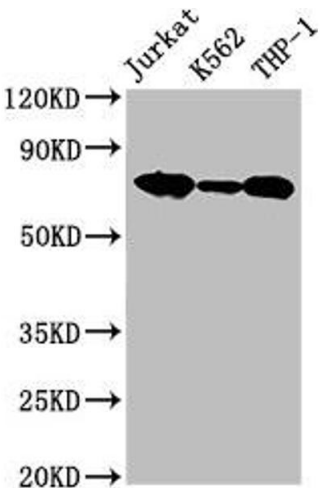
Storage Comment: Upon receipt, store at -20°C or -80°C. Avoid repeated freeze.

Images



Immunohistochemistry

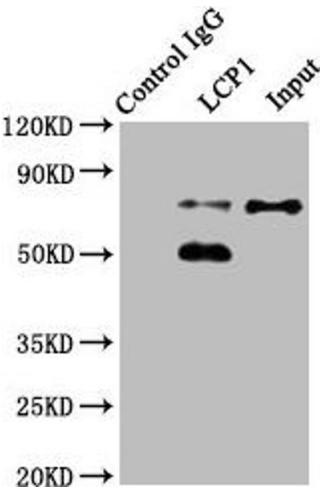
Image 1. IHC image of ABIN7163556 diluted at 1:400 and staining in paraffin-embedded human spleen tissue performed on a Leica Bond™ system. After dewaxing and hydration, antigen retrieval was mediated by high pressure in a citrate buffer (pH 6.0). Section was blocked with 10% normal goat serum 30min at RT. Then primary antibody (1% BSA) was incubated at 4°C overnight. The primary is detected by a biotinylated secondary antibody and



visualized using an HRP conjugated SP system.

Western Blotting

Image 2. Western Blot Positive WB detected in: Jurkat whole cell lysate, K562 whole cell lysate, THP-1 whole cell lysate All lanes: LCP1 antibody at 2.6 µg/mL Secondary Goat polyclonal to rabbit IgG at 1/50000 dilution Predicted band size: 71, 22 kDa Observed band size: 71 kDa



Western Blotting

Image 3. Immunoprecipitating LCP1 in Jurkat whole cell lysate Lane 1: Rabbit control IgG instead of ABIN7163556 in Jurkat whole cell lysate. For western blotting, a HRP-conjugated Protein G antibody was used as the secondary antibody (1/2000) Lane 2: ABIN7163556 (8 µg) + Jurkat whole cell lysate (500 µg) Lane 3: Jurkat whole cell lysate (20 µg)