



[Go to Product page](#)

Datasheet for ABIN7163589
anti-CD42a antibody (AA 17-88)

3 Images

Overview

Quantity:	100 µg
Target:	CD42a (GP9)
Binding Specificity:	AA 17-88
Reactivity:	Human
Host:	Rabbit
Clonality:	Polyclonal
Conjugate:	This CD42a antibody is un-conjugated
Application:	Immunohistochemistry (IHC), ELISA, Immunofluorescence (IF)

Product Details

Immunogen:	Recombinant Human Platelet glycoprotein IX protein (17-88AA)
Isotype:	IgG
Cross-Reactivity:	Human
Purification:	>95%, Protein G purified

Target Details

Target:	CD42a (GP9)
Alternative Name:	GP9 (GP9 Products)
Background:	Background: The GPIb-V-IX complex functions as the vWF receptor and mediates vWF-dependent platelet adhesion to blood vessels. The adhesion of platelets to injured vascular

Target Details

surfaces in the arterial circulation is a critical initiating event in hemostasis. GP-IX may provide for membrane insertion and orientation of GP-Ib.

Aliases: CD42a antibody, Glycoprotein 9 antibody, Glycoprotein IX antibody, Glycoprotein IX (platelet) antibody, Glycoprotein IX precursor antibody, GP IX antibody, GP-IX antibody, GP9 antibody, GPIX antibody, GPIX_HUMAN antibody, Platelet glycoprotein IX antibody

UniProt: [P14770](#)

Application Details

Application Notes: Recommended dilution: IHC:1:20-1:200, IF:1:50-1:200,

Restrictions: For Research Use only

Handling

Format: Liquid

Buffer: Preservative: 0.03 % Proclin 300
Constituents: 50 % Glycerol, 0.01M PBS, pH 7.4

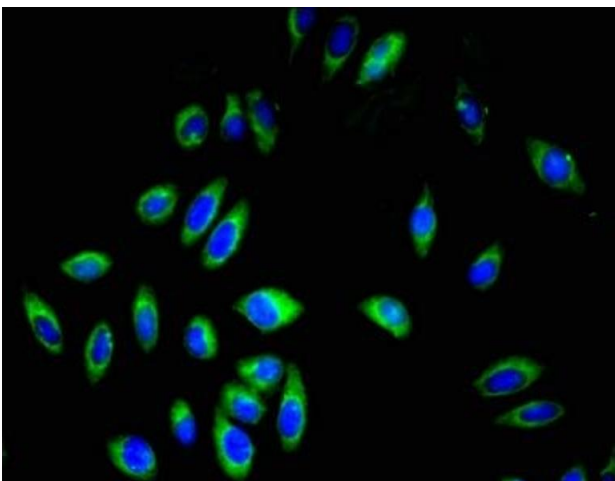
Preservative: ProClin

Precaution of Use: This product contains ProClin: a POISONOUS AND HAZARDOUS SUBSTANCE which should be handled by trained staff only.

Storage: -20 °C,-80 °C

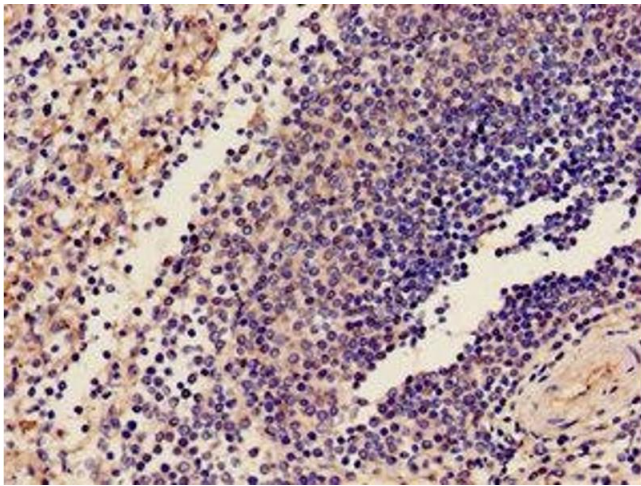
Storage Comment: Upon receipt, store at -20°C or -80°C. Avoid repeated freeze.

Images



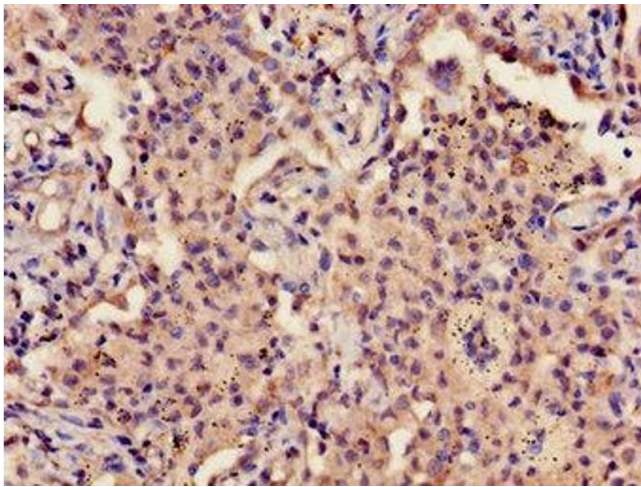
Immunofluorescence

Image 1. Immunofluorescent analysis of A549 cells using ABIN7163589 at dilution of 1:100 and Alexa Fluor 488-conjugated AffiniPure Goat Anti-Rabbit IgG(H+L)



Immunohistochemistry

Image 2. Immunohistochemistry of paraffin-embedded human spleen tissue using ABIN7163589 at dilution of 1:100



Immunohistochemistry

Image 3. Immunohistochemistry of paraffin-embedded human lung cancer using ABIN7163589 at dilution of 1:100