



[Go to Product page](#)

Datasheet for ABIN7163613  
**anti-PLA2G7 antibody (AA 49-441)**

3 Images

### Overview

Quantity:	100 µg
Target:	PLA2G7 (Lp-PLA2)
Binding Specificity:	AA 49-441
Reactivity:	Human
Host:	Rabbit
Clonality:	Polyclonal
Conjugate:	This PLA2G7 antibody is un-conjugated
Application:	Western Blotting (WB), ELISA, Immunohistochemistry (IHC)

### Product Details

Immunogen:	Recombinant Human Platelet-activating factor acetylhydrolase protein (49-441AA)
Isotype:	IgG
Cross-Reactivity:	Human
Purification:	>95%, Protein G purified

### Target Details

Target:	PLA2G7 (Lp-PLA2)
Alternative Name:	PLA2G7 ( <a href="#">Lp-PLA2 Products</a> )
Background:	Background: Modulates the action of platelet-activating factor (PAF) by hydrolyzing the sn-2 ester bond to yield the biologically inactive lyso-PAF. Has a specificity for substrates with a

## Target Details

---

short residue at the sn-2 position. It is inactive against long-chain phospholipids.

Aliases: Platelet-activating factor acetylhydrolase precursor antibody, 1 alkyl 2 acetyllycerophosphocholine esterase antibody, 1-alkyl-2-acetyllycerophosphocholine esterase antibody, 2 acetyl 1 alkyllycerophosphocholine esterase antibody, 2-acetyl-1-alkyllycerophosphocholine esterase antibody, EC 3.1.1.47 PAF acetylhydrolase PAF 2-acylhydrolase LDL associated phospholipase A2 antibody, Group VIIA phospholipase A2 antibody, Group-VIIA phospholipase A2 antibody, gVIIA PLA2 antibody, gVIIA-PLA2 antibody, LDL associated phospholipase A2 antibody, LDL PLA(2) antibody, LDL PLA2 antibody, LDL-associated phospholipase A2 antibody, LDL-PLA(2) antibody, Lipoprotein associated phospholipase A2 antibody, LP PLA2 antibody, PAF 2 acylhydrolase antibody, PAF 2 acylhydrolase LDL associated phospholipase A2 antibody, PAF 2-acylhydrolase antibody, PAF acetylhydrolase antibody, PAFA\_HUMAN antibody, PAFAD antibody, PAFAH antibody, Phospholipase A2, group VII (platelet activating factor acetylhydrolase, plasma) antibody, PLA2G7 antibody, Platelet activating factor acetylhydrolase 2 antibody, Platelet activating factor acetylhydrolase antibody, Platelet-activating factor acetylhydrolase antibody

---

UniProt: [Q13093](#)

---

Pathways: [Peptide Hormone Metabolism](#)

## Application Details

---

Application Notes: Recommended dilution: WB:1:1000-1:5000, IHC:1:20-1:200,

---

Restrictions: For Research Use only

## Handling

---

Format: Liquid

---

Buffer: Preservative: 0.03 % Proclin 300  
Constituents: 50 % Glycerol, 0.01M PBS, PH 7.4

---

Preservative: ProClin

---

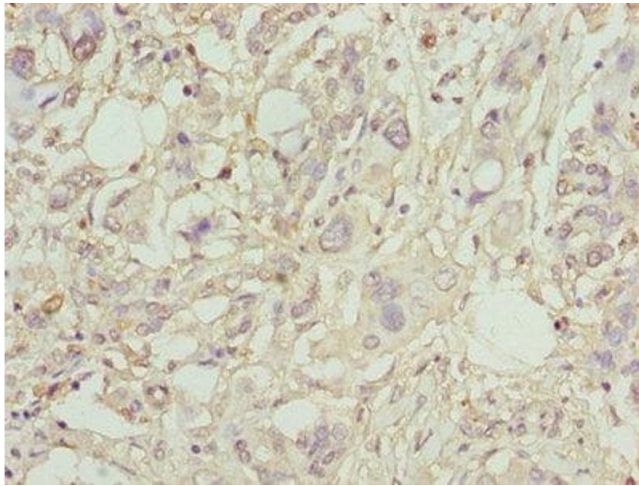
Precaution of Use: This product contains ProClin: a POISONOUS AND HAZARDOUS SUBSTANCE which should be handled by trained staff only.

---

Storage: -20 °C,-80 °C

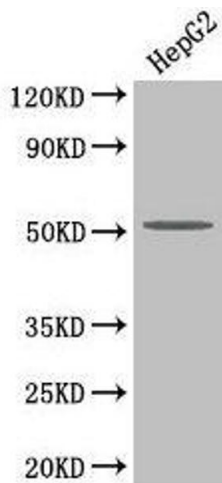
---

Storage Comment: Upon receipt, store at -20°C or -80°C. Avoid repeated freeze.



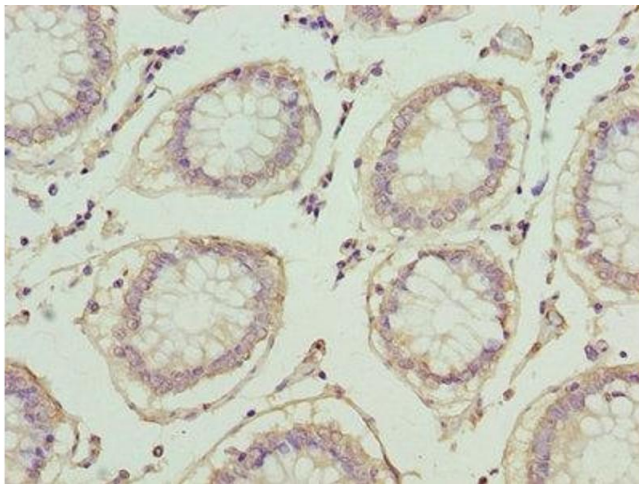
### Immunohistochemistry

**Image 1.** Immunohistochemistry of paraffin-embedded human pancreatic cancer using ABIN7163613 at dilution of 1:100



### Western Blotting

**Image 2.** Western Blot Positive WB detected in: HepG2 whole cell lysate All lanes: PLA2G7 antibody at 4 µg/mL Secondary Goat polyclonal to rabbit IgG at 1/50000 dilution Predicted band size: 51 kDa Observed band size: 51 kDa



### Immunohistochemistry

**Image 3.** Immunohistochemistry of paraffin-embedded human colon cancer using ABIN7163613 at dilution of 1:100