

Datasheet for ABIN7163636  
**anti-PLEKHA1 antibody (AA 285-404)**[Go to Product page](#)

## 3 Images

## Overview

Quantity:	100 µL
Target:	PLEKHA1
Binding Specificity:	AA 285-404
Reactivity:	Human
Host:	Rabbit
Clonality:	Polyclonal
Conjugate:	This PLEKHA1 antibody is un-conjugated
Application:	Western Blotting (WB), ELISA, Immunohistochemistry (IHC)

## Product Details

Immunogen:	Recombinant Human Pleckstrin homology domain-containing family A member 1 protein (285-404AA)
Isotype:	IgG
Cross-Reactivity:	Human
Purification:	Antigen Affinity Purified

## Target Details

Target:	PLEKHA1
Alternative Name:	PLEKHA1 ( <a href="#">PLEKHA1 Products</a> )
Background:	Background: Binds specifically to phosphatidylinositol 3,4-diphosphate (PtdIns3,4P2), but not to

## Target Details

other phosphoinositides. May recruit other proteins to the plasma membrane.

Aliases: OTTHUMP00000020651 antibody, PH domain containing family A member 1 antibody, PH domain-containing family A member 1 antibody, PKHA1\_HUMAN antibody, Pleckstrin homology domain containing A1 antibody, Pleckstrin homology domain containing family A member 1 antibody, Pleckstrin homology domain containing, family A (phosphoinositide binding specific) member antibody, Pleckstrin homology domain-containing family A member 1 antibody, PLEKHA1 antibody, Tandem PH domain containing protein 1 antibody, Tandem PH domain-containing protein 1 antibody, TAPP 1 antibody, TAPP-1 antibody, TAPP1 antibody

UniProt: [Q9HB21](#)

Pathways: [Platelet-derived growth Factor Receptor Signaling](#)

## Application Details

Application Notes: Recommended dilution: WB:1:1000-1:5000, IHC:1:20-1:200,

Restrictions: For Research Use only

## Handling

Format: Liquid

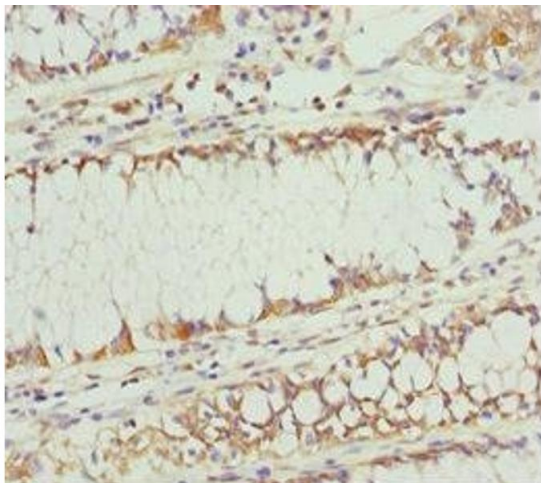
Buffer: PBS with 0.02 % sodium azide, 50 % glycerol, pH 7.3.

Preservative: Sodium azide

Precaution of Use: This product contains Sodium azide: a POISONOUS AND HAZARDOUS SUBSTANCE which should be handled by trained staff only.

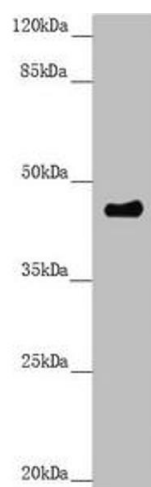
Storage: -20 °C,-80 °C

Storage Comment: Upon receipt, store at -20°C or -80°C. Avoid repeated freeze.



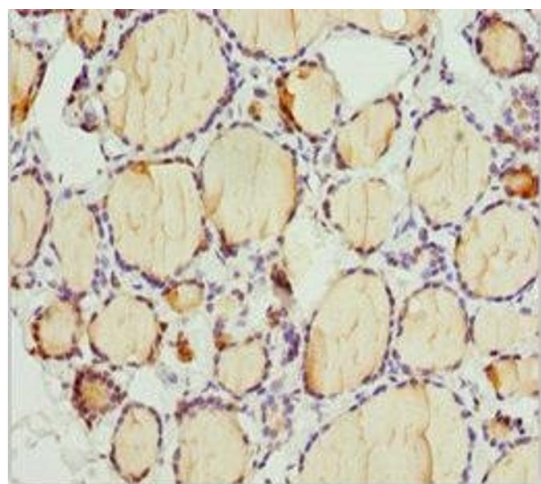
#### Immunohistochemistry

**Image 1.** Immunohistochemistry of paraffin-embedded human colon cancer using ABIN7163636 at dilution of 1:100



#### Western Blotting

**Image 2.** Western blot All lanes: PLEKHA1 antibody at 3.11 µg/mL + A549 whole cell lysate Secondary Goat polyclonal to rabbit IgG at 1/10000 dilution Predicted band size: 46, 39 kDa Observed band size: 46 kDa



#### Immunohistochemistry

**Image 3.** Immunohistochemistry of paraffin-embedded human thyroid tissue using ABIN7163636 at dilution of 1:100