



[Go to Product page](#)

Datasheet for ABIN7163641
anti-PLEKHA8 antibody (AA 1-300)

3 Images

Overview

| | |
|----------------------|--|
| Quantity: | 100 µg |
| Target: | PLEKHA8 |
| Binding Specificity: | AA 1-300 |
| Reactivity: | Human |
| Host: | Rabbit |
| Clonality: | Polyclonal |
| Conjugate: | This PLEKHA8 antibody is un-conjugated |
| Application: | ELISA, Western Blotting (WB), Immunohistochemistry (IHC) |

Product Details

| | |
|-------------------|---|
| Immunogen: | Recombinant Human Pleckstrin homology domain-containing family A member 8 protein (1-300AA) |
| Isotype: | IgG |
| Cross-Reactivity: | Human, Mouse |
| Purification: | Antigen Affinity Purified |

Target Details

| | |
|-------------------|--|
| Target: | PLEKHA8 |
| Alternative Name: | PLEKHA8 (PLEKHA8 Products) |
| Background: | Background: Cargo transport protein that is required for apical transport from the Golgi |

Target Details

complex. Transports AQP2 from the trans-Golgi network (TGN) to sites of AQP2 phosphorylation. Mediates the non-vesicular transport of glucosylceramide (GlcCer) from the trans-Golgi network (TGN) to the plasma membrane and plays a pivotal role in the synthesis of complex glycosphingolipids. Binding of both phosphatidylinositol 4-phosphate (PIP) and ARF1 are essential for the GlcCer transfer ability. Also required for primary cilium formation, possibly by being involved in the transport of raft lipids to the apical membrane, and for membrane tubulation.

Aliases: FAPP-2 antibody, FAPP2 antibody, hFAPP2 antibody, MGC3358 antibody, PH domain-containing family A member 8 antibody, Phosphatidylinositol-four-phosphate adapter protein 2 antibody, Phosphoinositide binding specific member 8 antibody, Phosphoinositol 4 phosphate adaptor protein 2 antibody, Phosphoinositol 4-phosphate adapter protein 2 antibody, PKHA8_HUMAN antibody, Pleckstrin homology domain containing A8 antibody, Pleckstrin homology domain containing family A (Phosphoinositide binding specific) member 8 antibody, Pleckstrin homology domain containing family A antibody, Pleckstrin homology domain-containing family A member 8 antibody, Plekha8 antibody, PLEKHA8 protein antibody, Serologically defined breast cancer antigen NY-BR-86 antibody

UniProt: [Q96JA3](#)

Application Details

Application Notes: Recommended dilution: WB:1:500-1:2000, IHC:1:20-1:200,

Restrictions: For Research Use only

Handling

Format: Liquid

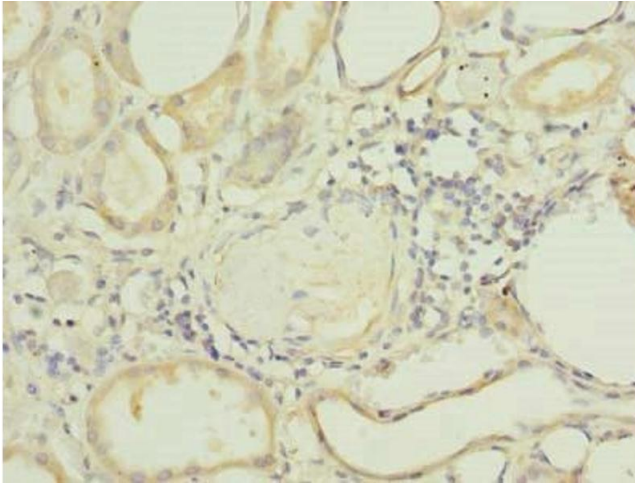
Buffer: Preservative: 0.03 % Proclin 300
Constituents: 50 % Glycerol, 0.01M PBS, PH 7.4

Preservative: ProClin

Precaution of Use: This product contains ProClin: a POISONOUS AND HAZARDOUS SUBSTANCE which should be handled by trained staff only.

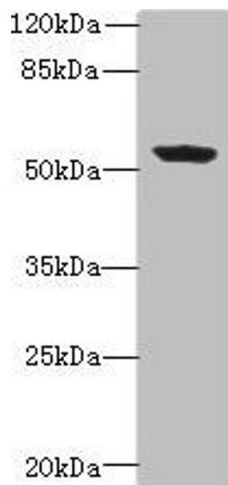
Storage: -20 °C,-80 °C

Storage Comment: Upon receipt, store at -20°C or -80°C. Avoid repeated freeze.



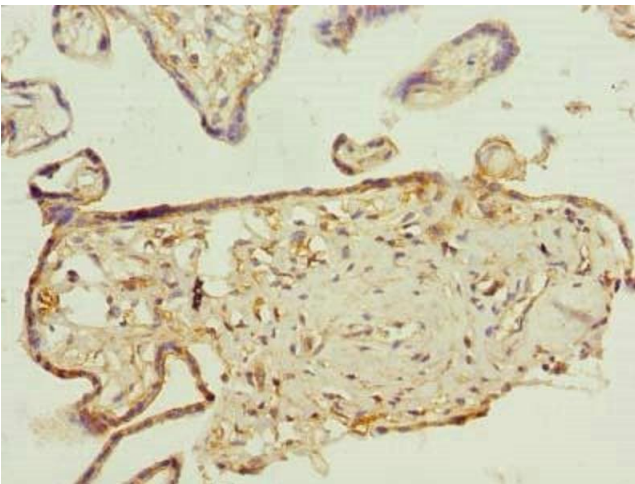
Immunohistochemistry

Image 1. Immunohistochemistry of paraffin-embedded human kidney tissue using ABIN7163641 at dilution of 1:100



Western Blotting

Image 2. Western blot All lanes: PLEKHA8 antibody at 0.8 μ g/mL + Mouse brain tissue Secondary Goat polyclonal to rabbit IgG at 1/10000 dilution Predicted band size: 59, 52, 50 kDa Observed band size: 59 kDa



Immunohistochemistry

Image 3. Immunohistochemistry of paraffin-embedded human placenta tissue using ABIN7163641 at dilution of 1:100