



[Go to Product page](#)

Datasheet for ABIN7163671
anti-PHLDA3 antibody (AA 43-95)

1 Image

Overview

Quantity:	100 µg
Target:	PHLDA3
Binding Specificity:	AA 43-95
Reactivity:	Human
Host:	Rabbit
Clonality:	Polyclonal
Conjugate:	This PHLDA3 antibody is un-conjugated
Application:	ELISA, Immunofluorescence (IF)

Product Details

Immunogen:	Recombinant Human Pleckstrin homology-like domain family A member 3 protein (43-95AA)
Isotype:	IgG
Cross-Reactivity:	Human
Purification:	>95%, Protein G purified

Target Details

Target:	PHLDA3
Alternative Name:	PHLDA3 (PHLDA3 Products)
Background:	Background: p53/TP53-regulated repressor of Akt/AKT1 signaling. Represses AKT1 by preventing AKT1-binding to membrane lipids, thereby inhibiting AKT1 translocation to the

Target Details

cellular membrane and activation. Contributes to p53/TP53-dependent apoptosis by repressing AKT1 activity. Its direct transcription regulation by p53/TP53 may explain how p53/TP53 can negatively regulate AKT1. May act as a tumor suppressor.

Aliases: PHLA3_HUMAN antibody, PHLDA 3 antibody, phlda3 antibody, Pleckstrin homology like domain family A member 2 antibody, Pleckstrin homology like domain family A member 3 antibody, Pleckstrin homology-like domain family A member 3 antibody, TDAG51/Ipl homolog 1 antibody, TDAG51/Ipl homologue 1 antibody, TIH 1 antibody, TIH1 antibody

UniProt: [Q9Y5J5](#)

Application Details

Application Notes: Recommended dilution: IF:1:50-1:200,

Restrictions: For Research Use only

Handling

Format: Liquid

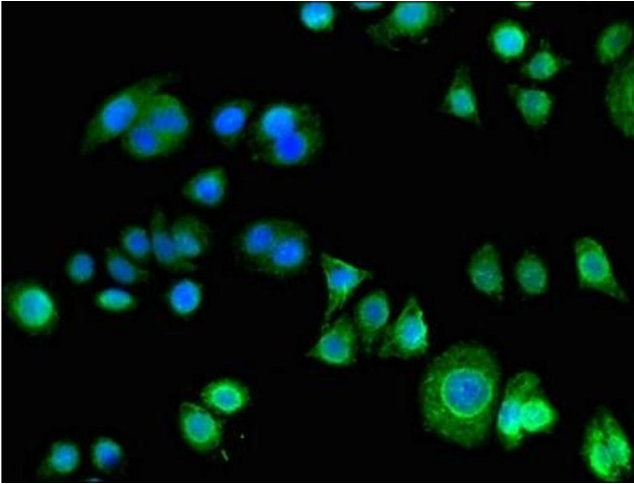
Buffer: Preservative: 0.03 % Proclin 300
Constituents: 50 % Glycerol, 0.01M PBS, pH 7.4

Preservative: ProClin

Precaution of Use: This product contains ProClin: a POISONOUS AND HAZARDOUS SUBSTANCE which should be handled by trained staff only.

Storage: -20 °C,-80 °C

Storage Comment: Upon receipt, store at -20°C or -80°C. Avoid repeated freeze.



Immunofluorescence

Image 1. Immunofluorescent analysis of PC-3 cells using ABIN7163671 at dilution of 1:100 and Alexa Fluor 488-conjugated AffiniPure Goat Anti-Rabbit IgG(H+L)