

Datasheet for ABIN7163675
anti-PHLDB1 antibody (AA 233-423)[Go to Product page](#)

1 Image

Overview

Quantity:	100 µg
Target:	PHLDB1
Binding Specificity:	AA 233-423
Reactivity:	Human
Host:	Rabbit
Clonality:	Polyclonal
Conjugate:	This PHLDB1 antibody is un-conjugated
Application:	ELISA, Immunohistochemistry (IHC)

Product Details

Immunogen:	Recombinant Human Pleckstrin homology-like domain family B member 1 protein (233-423AA)
Isotype:	IgG
Cross-Reactivity:	Human
Purification:	>95%, Protein G purified

Target Details

Target:	PHLDB1
Alternative Name:	PHLDB1 (PHLDB1 Products)
Background:	Background: basal cortex, positive regulation of basement membrane assembly involved in embryonic body morphogenesis, regulation of epithelial to mesenchymal transition, regulation

Target Details

of gastrulation, regulation of microtubule cytoskeleton organization

Aliases: PHLDB1 antibody, KIAA0638 antibody, LL5A antibody, DLNB07Pleckstrin homology-like domain family B member 1 antibody, Protein LL5-alpha antibody

UniProt: [Q86UU1](#)

Application Details

Application Notes: Recommended dilution: IHC:1:200-1:500,

Restrictions: For Research Use only

Handling

Format: Liquid

Buffer: Preservative: 0.03 % Proclin 300
Constituents: 50 % Glycerol, 0.01M PBS, pH 7.4

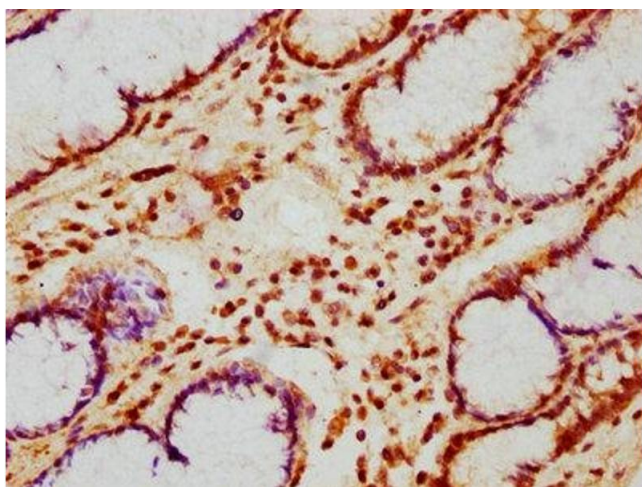
Preservative: ProClin

Precaution of Use: This product contains ProClin: a POISONOUS AND HAZARDOUS SUBSTANCE which should be handled by trained staff only.

Storage: -20 °C,-80 °C

Storage Comment: Upon receipt, store at -20°C or -80°C. Avoid repeated freeze.

Images



Immunohistochemistry

Image 1. IHC image of ABIN7163675 diluted at 1:200 and staining in paraffin-embedded human gastric cancer performed on a Leica Bond™ system. After dewaxing and hydration, antigen retrieval was mediated by high pressure in a citrate buffer (pH 6.0). Section was blocked with 10 % normal goat serum 30 min at RT. Then primary antibody (1 % BSA) was incubated at 4 °C overnight. The primary is detected by a biotinylated secondary antibody and visualized using an HRP conjugated SP system.