



[Go to Product page](#)

Datasheet for ABIN7163695  
**anti-Plexin A1 antibody (AA 32-296)**

1 Image

### Overview

Quantity:	100 µg
Target:	Plexin A1 (PLXNA1)
Binding Specificity:	AA 32-296
Reactivity:	Human
Host:	Rabbit
Clonality:	Polyclonal
Conjugate:	This Plexin A1 antibody is un-conjugated
Application:	ELISA, Immunohistochemistry (IHC)

### Product Details

Immunogen:	Recombinant Human Plexin-A1 protein (32-296AA)
Isotype:	IgG
Cross-Reactivity:	Human
Purification:	>95%, Protein G purified

### Target Details

Target:	Plexin A1 (PLXNA1)
Alternative Name:	PLXNA1 ( <a href="#">PLXNA1 Products</a> )
Background:	Background: Coreceptor for SEMA3A, SEMA3C, SEMA3F and SEMA6D. Necessary for signaling by class 3 semaphorins and subsequent remodeling of the cytoskeleton. Plays a role in axon

## Target Details

---

guidance, invasive growth and cell migration. Class 3 semaphorins bind to a complex composed of a neuropilin and a plexin. The plexin modulates the affinity of the complex for specific semaphorins, and its cytoplasmic domain is required for the activation of down-stream signaling events in the cytoplasm

Aliases: PLXNA1 antibody, NOV antibody, PLXN1 antibody, Plexin-A1 antibody, Semaphorin receptor NOV antibody

---

UniProt: [Q9UIW2](#)

---

Pathways: [Smooth Muscle Cell Migration](#)

## Application Details

---

---

Application Notes: Recommended dilution: IHC:1:10-1:100,

---

Restrictions: For Research Use only

## Handling

---

---

Format: Liquid

---

Buffer: Preservative: 0.03 % Proclin 300  
Constituents: 50 % Glycerol, 0.01M PBS, PH 7.4

---

Preservative: ProClin

---

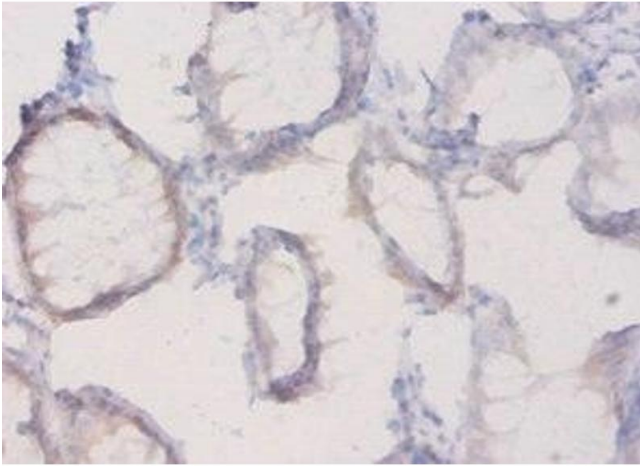
Precaution of Use: This product contains ProClin: a POISONOUS AND HAZARDOUS SUBSTANCE which should be handled by trained staff only.

---

Storage: -20 °C,-80 °C

---

Storage Comment: Upon receipt, store at -20°C or -80°C. Avoid repeated freeze.



### Immunohistochemistry

**Image 1.** Immunohistochemistry of paraffin-embedded human colon cancer using ABIN7163695 at dilution of 1:20