



[Go to Product page](#)

Datasheet for ABIN7163721
anti-POC1A antibody (AA 138-407)

3 Images

Overview

| | |
|----------------------|--|
| Quantity: | 100 µL |
| Target: | POC1A |
| Binding Specificity: | AA 138-407 |
| Reactivity: | Human |
| Host: | Rabbit |
| Clonality: | Polyclonal |
| Conjugate: | This POC1A antibody is un-conjugated |
| Application: | Western Blotting (WB), Immunohistochemistry (IHC), ELISA |

Product Details

| | |
|-------------------|---|
| Immunogen: | Recombinant Human POC1 centriolar protein homolog A protein (138-407AA) |
| Isotype: | IgG |
| Cross-Reactivity: | Human |
| Purification: | Antigen Affinity Purified |

Target Details

| | |
|-------------------|---|
| Target: | POC1A |
| Alternative Name: | POC1A (POC1A Products) |
| Background: | Background: Plays an important role in centriole assembly and/or stability and ciliogenesis. Involved in early steps of centriole duplication, as well as in the later steps of centriole length |

Target Details

control. Acts in concert with POC1B to ensure centriole integrity and proper mitotic spindle formation.

Aliases: Pix2 antibody, POC1 centriolar protein homolog A (Chlamydomonas) antibody, POC1 centriolar protein homolog A antibody, Poc1a antibody, POC1A_HUMAN antibody, WD repeat containing protein 51A antibody, WD repeat domain 51A antibody, WD repeat-containing protein 51A antibody

UniProt: [Q8NBT0](#)

Application Details

Application Notes: Recommended dilution: WB:1:1000-1:5000, IHC:1:20-1:200,

Restrictions: For Research Use only

Handling

Format: Liquid

Buffer: PBS with 0.02 % sodium azide, 50 % glycerol, pH 7.3.

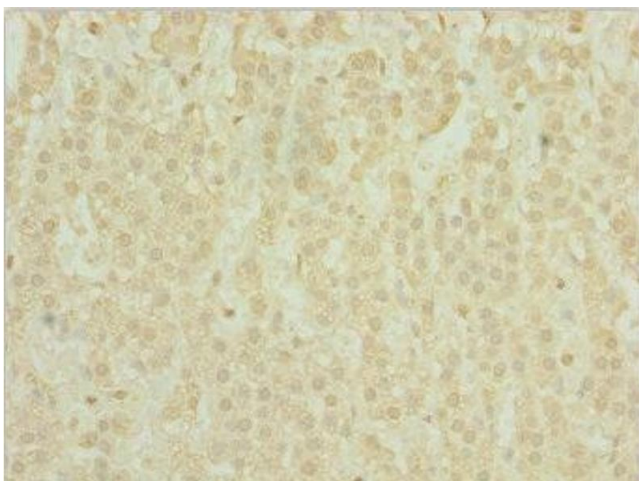
Preservative: Sodium azide

Precaution of Use: This product contains Sodium azide: a POISONOUS AND HAZARDOUS SUBSTANCE which should be handled by trained staff only.

Storage: -20 °C,-80 °C

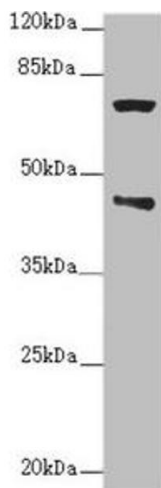
Storage Comment: Upon receipt, store at -20°C or -80°C. Avoid repeated freeze.

Images



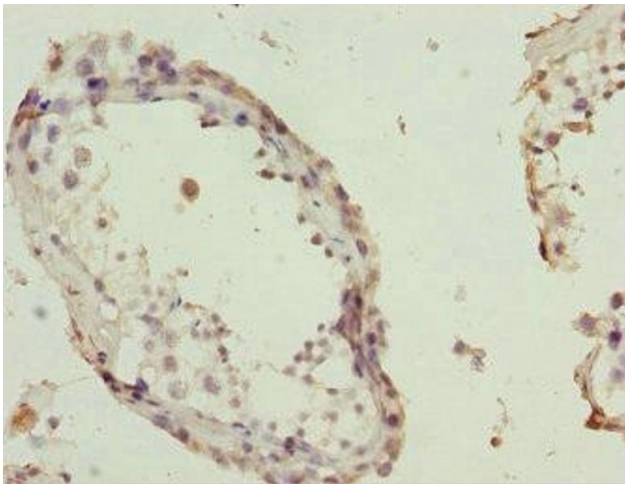
Immunohistochemistry

Image 1. Immunohistochemistry of paraffin-embedded human adrenal gland tissue using ABIN7163721 at dilution of 1:100



Western Blotting

Image 2. Western blot All lanes: POC1A antibody at 2.76 μ g/mL + Raji whole cell lysate Secondary Goat polyclonal to rabbit IgG at 1/10000 dilution Predicted band size: 46, 40, 41 kDa Observed band size: 46, 70 kDa



Immunohistochemistry

Image 3. Immunohistochemistry of paraffin-embedded human testis tissue using ABIN7163721 at dilution of 1:100