

Datasheet for ABIN7163806
anti-EED antibody (AA 1-300)[Go to Product page](#)

2 Images

Overview

Quantity:	100 µL
Target:	EED
Binding Specificity:	AA 1-300
Reactivity:	Human
Host:	Rabbit
Clonality:	Polyclonal
Conjugate:	This EED antibody is un-conjugated
Application:	Western Blotting (WB), ELISA, Immunohistochemistry (IHC)

Product Details

Immunogen:	Recombinant Human Polycomb protein EED protein (1-300AA)
Isotype:	IgG
Cross-Reactivity:	Human
Purification:	Antigen Affinity Purified

Target Details

Target:	EED
Alternative Name:	EED (EED Products)
Background:	Background: Polycomb group (PcG) protein. Component of the PRC2/EED-EZH2 complex, which methylates '\\Lys-9\\' and '\\Lys-27\\' of histone H3, leading to transcriptional

Target Details

repression of the affected target gene. Also recognizes 'Lys-26' trimethylated histone H1 with the effect of inhibiting PRC2 complex methyltransferase activity on nucleosomal histone H3 'Lys-27', whereas H3 'Lys-27' recognition has the opposite effect, enabling the propagation of this repressive mark. The PRC2/EED-EZH2 complex may also serve as a recruiting platform for DNA methyltransferases, thereby linking two epigenetic repression systems. Genes repressed by the PRC2/EED-EZH2 complex include HOXC8, HOXA9, MYT1 and CDKN2A.

Aliases: eed antibody, EED protein antibody, EED, mouse, homolog of antibody, EED_HUMAN antibody, Embryonic ectoderm development antibody, Embryonic ectoderm development isoform a antibody, Embryonic ECTODERM development protein homolog antibody, Embryonic ectoderm development protein, mouse, homolog of antibody, hEED antibody, OTTHUMP00000235483 antibody, OTTHUMP00000235484 antibody, OTTHUMP00000235485 antibody, Polycomb protein eed antibody, WAIT 1 antibody, WAIT-1 antibody, WAIT1 antibody, WD protein associating with integrin cytoplasmic tails 1 antibody

UniProt: [O75530](#)

Application Details

Application Notes: Recommended dilution: WB:1:500-1:2000, IHC:1:20-1:200,

Restrictions: For Research Use only

Handling

Format: Liquid

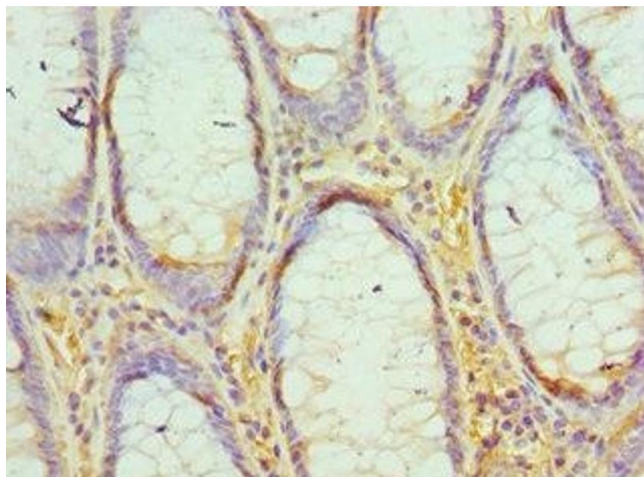
Buffer: PBS with 0.02 % sodium azide, 50 % glycerol, pH 7.3.

Preservative: Sodium azide

Precaution of Use: This product contains Sodium azide: a POISONOUS AND HAZARDOUS SUBSTANCE which should be handled by trained staff only.

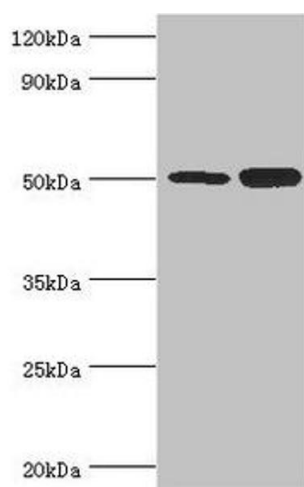
Storage: -20 °C, -80 °C

Storage Comment: Upon receipt, store at -20°C or -80°C. Avoid repeated freeze.



Immunohistochemistry

Image 1. Immunohistochemistry of paraffin-embedded human colon cancer using ABIN7163806 at dilution of 1:100



Western Blotting

Image 2. Western blot All lanes: Polycomb protein EED antibody at 4 µg/mL Lane 1: Hela whole cell lysate Lane 2: K562 whole cell lysate Secondary Goat polyclonal to rabbit IgG at 1/10000 dilution Predicted band size: 51, 54, 46 kDa Observed band size: 51 kDa