



[Go to Product page](#)

Datasheet for ABIN7163811
anti-SUZ12 antibody (AA 131-305)

3 Images

Overview

Quantity:	100 µg
Target:	SUZ12
Binding Specificity:	AA 131-305
Reactivity:	Human
Host:	Rabbit
Clonality:	Polyclonal
Conjugate:	This SUZ12 antibody is un-conjugated
Application:	Western Blotting (WB), ELISA, Immunohistochemistry (IHC), Immunofluorescence (IF)

Product Details

Immunogen:	Recombinant Human Polycomb protein SUZ12 protein (131-305AA)
Isotype:	IgG
Cross-Reactivity:	Human, Rat
Purification:	>95%, Protein G purified

Target Details

Target:	SUZ12
Alternative Name:	SUZ12 (SUZ12 Products)
Background:	Background: Polycomb group (PcG) protein. Component of the PRC2/EED-EZH2 complex, which methylates '\Lys-9\' (H3K9me) and '\Lys-27\' (H3K27me) of histone H3, leading to

Target Details

transcriptional repression of the affected target gene. The PRC2/EED-EZH2 complex may also serve as a recruiting platform for DNA methyltransferases, thereby linking two epigenetic repression systems. Genes repressed by the PRC2/EED-EZH2 complex include HOXC8, HOXA9, MYT1 and CDKN2A.

Aliases: ChET 9 protein antibody, CHET9 antibody, Chromatin precipitated E2F target 9 protein antibody, JJAZ1 antibody, Joined to JAZF1 protein antibody, KIAA0160 antibody, Polycomb protein SUZ12 antibody, Suppressor of zeste 12 homolog antibody, Suppressor of zeste 12 protein homolog antibody, SUZ12 antibody, SUZ12 polycomb repressive complex 2 subunit antibody, SUZ12_HUMAN antibody

UniProt: [Q15022](#)

Application Details

Application Notes: Recommended dilution: WB:1:500-1:5000, IHC:1:1000-1:2000, IF:1:50-1:500,

Restrictions: For Research Use only

Handling

Format: Liquid

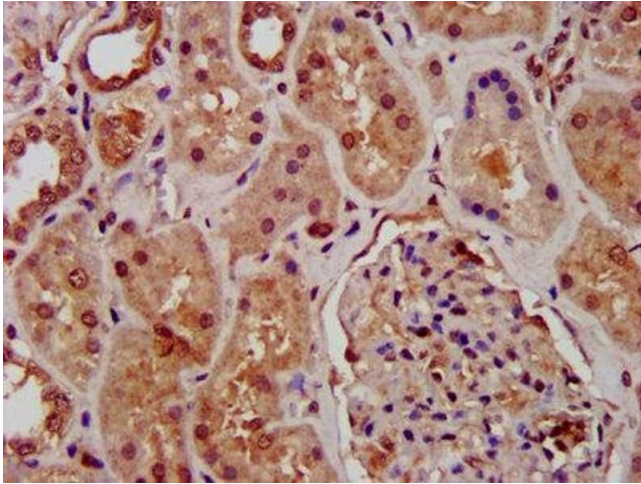
Buffer: Preservative: 0.03 % Proclin 300
Constituents: 50 % Glycerol, 0.01M PBS, PH 7.4

Preservative: ProClin

Precaution of Use: This product contains ProClin: a POISONOUS AND HAZARDOUS SUBSTANCE which should be handled by trained staff only.

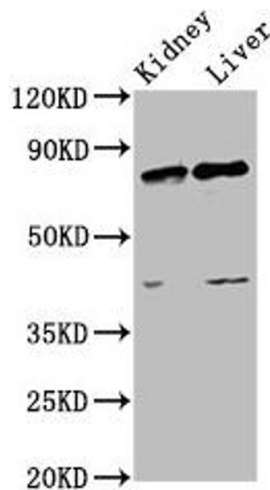
Storage: -20 °C,-80 °C

Storage Comment: Upon receipt, store at -20°C or -80°C. Avoid repeated freeze.



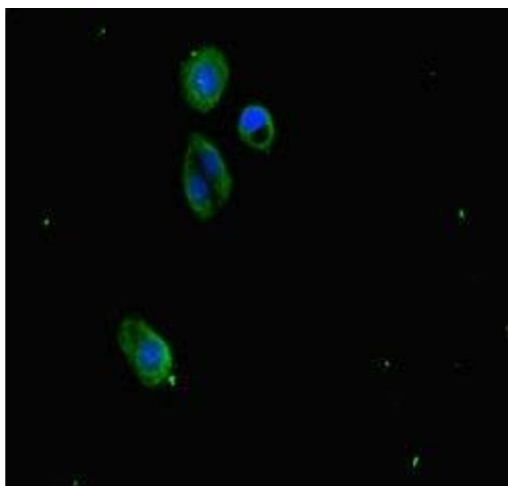
Immunohistochemistry

Image 1. IHC image of ABIN7163811 diluted at 1:1000 and staining in paraffin-embedded human kidney tissue performed on a Leica Bond™ system. After dewaxing and hydration, antigen retrieval was mediated by high pressure in a citrate buffer (pH 6.0). Section was blocked with 10 % normal goat serum 30 min at RT. Then primary antibody (1 % BSA) was incubated at 4 °C overnight. The primary is detected by a biotinylated secondary antibody and visualized using an HRP conjugated SP system.



Western Blotting

Image 2. Western Blot Positive WB detected in: Rat kidney tissue, Rat liver tissue All lanes: SUZ12 antibody at 3.4 μg/mL Secondary Goat polyclonal to rabbit IgG at 1/50000 dilution Predicted band size: 84 kDa Observed band size: 84 kDa



Immunofluorescence

Image 3. Immunofluorescence staining of HepG2 cells with ABIN7163811 at 1:333, counter-stained with DAPI. The cells were fixed in 4 % formaldehyde, permeabilized using 0.2 % Triton X-100 and blocked in 10 % normal Goat Serum. The cells were then incubated with the antibody overnight at 4 °C. The secondary antibody was Alexa Fluor 488-conjugated AffiniPure Goat Anti-Rabbit IgG(H+L).