

Datasheet for ABIN7163820  
**anti-PKD1L1 antibody (AA 921-1164)**



[Go to Product page](#)

2 Images

## Overview

Quantity:	100 µg
Target:	PKD1L1
Binding Specificity:	AA 921-1164
Reactivity:	Human
Host:	Rabbit
Clonality:	Polyclonal
Conjugate:	This PKD1L1 antibody is un-conjugated
Application:	ELISA, Immunohistochemistry (IHC), Immunofluorescence (IF)

## Product Details

Immunogen:	Recombinant Human Polycystic kidney disease protein 1-like 1 protein (921-1164AA)
Isotype:	IgG
Cross-Reactivity:	Human
Purification:	>95%, Protein G purified

## Target Details

Target:	PKD1L1
Alternative Name:	PKD1L1 ( <a href="#">PKD1L1 Products</a> )
Background:	Background: Component of a ciliary calcium channel that controls calcium concentration within primary cilia without affecting cytoplasmic calcium concentration. Forms a heterodimer with

## Target Details

---

PKD2L1 in primary cilia and forms a calcium-permeant ciliary channel that regulates sonic hedgehog/SHH signaling and GLI2 transcription. Does not constitute the pore-forming subunit. Also involved in left/right axis specification downstream of nodal flow: forms a complex with PKD2 in cilia to facilitate flow detection in left/right patterning.

Aliases: PKD1L1 antibody, UNQ5785/PRO19563 antibody, Polycystic kidney disease protein 1-like 1 antibody, PC1-like 1 protein antibody, Polycystin-1L1 antibody

---

UniProt: [Q8TDX9](#)

## Application Details

---

Application Notes: Recommended dilution: IHC:1:20-1:200, IF:1:50-1:200,

Restrictions: For Research Use only

## Handling

---

Format: Liquid

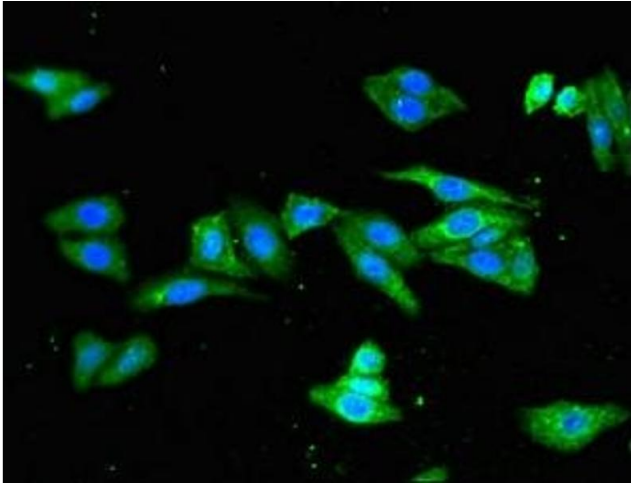
Buffer: Preservative: 0.03 % Proclin 300  
Constituents: 50 % Glycerol, 0.01M PBS, pH 7.4

Preservative: ProClin

Precaution of Use: This product contains ProClin: a POISONOUS AND HAZARDOUS SUBSTANCE which should be handled by trained staff only.

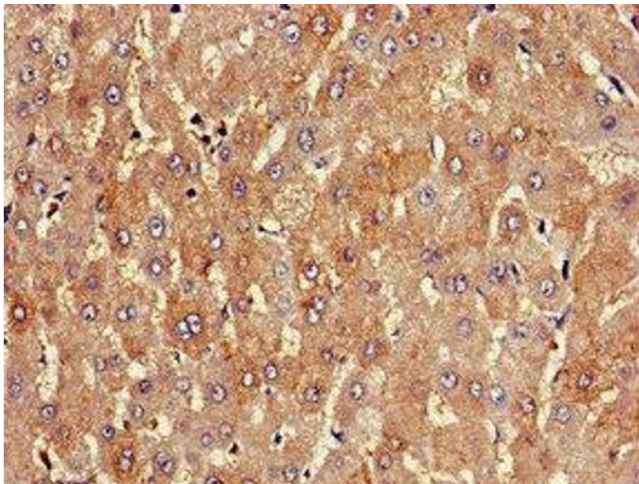
Storage: -20 °C,-80 °C

Storage Comment: Upon receipt, store at -20°C or -80°C. Avoid repeated freeze.



#### Immunofluorescence

**Image 1.** Immunofluorescent analysis of HepG2 cells using ABIN7163820 at dilution of 1:100 and Alexa Fluor 488-conjugated AffiniPure Goat Anti-Rabbit IgG(H+L)



#### Immunohistochemistry

**Image 2.** Immunohistochemistry of paraffin-embedded human liver tissue using ABIN7163820 at dilution of 1:100