

Datasheet for ABIN7163828
anti-PKD1L3 antibody (AA 22-194)[Go to Product page](#)

3 Images

Overview

Quantity:	100 µg
Target:	PKD1L3
Binding Specificity:	AA 22-194
Reactivity:	Human
Host:	Rabbit
Clonality:	Polyclonal
Conjugate:	This PKD1L3 antibody is un-conjugated
Application:	ELISA, Immunohistochemistry (IHC), Immunofluorescence (IF)

Product Details

Immunogen:	Recombinant Human Polycystic kidney disease protein 1-like 3 protein (22-194AA)
Isotype:	IgG
Cross-Reactivity:	Human
Purification:	>95%, Protein G purified

Target Details

Target:	PKD1L3
Alternative Name:	PKD1L3 (PKD1L3 Products)
Background:	Background: Component of a calcium channel. May act as a sour taste receptor by forming a calcium channel with PKD1L3 in gustatory cells, however, its contribution to sour taste

Target Details

perception is unclear in vivo and may be indirect.

Aliases: PKD1L3 antibody, Polycystic kidney disease protein 1-like 3 antibody, PC1-like 3 protein antibody, Polycystin-1L3 antibody

UniProt: [Q7Z443](#)

Application Details

Application Notes: Recommended dilution: IHC:1:20-1:200, IF:1:50-1:200,

Restrictions: For Research Use only

Handling

Format: Liquid

Buffer: Preservative: 0.03 % Proclin 300
Constituents: 50 % Glycerol, 0.01M PBS, PH 7.4

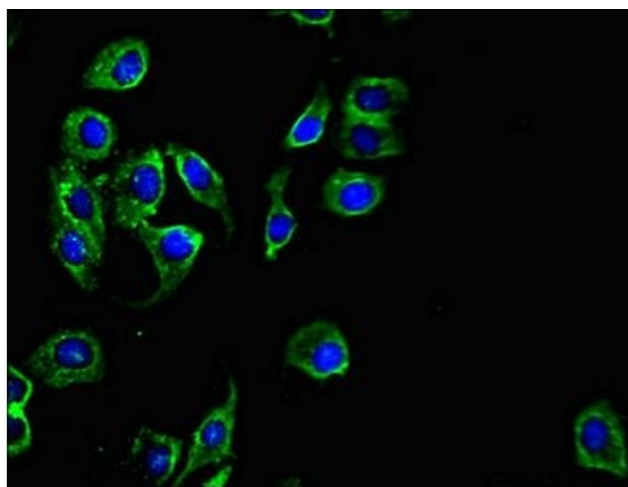
Preservative: ProClin

Precaution of Use: This product contains ProClin: a POISONOUS AND HAZARDOUS SUBSTANCE which should be handled by trained staff only.

Storage: -20 °C,-80 °C

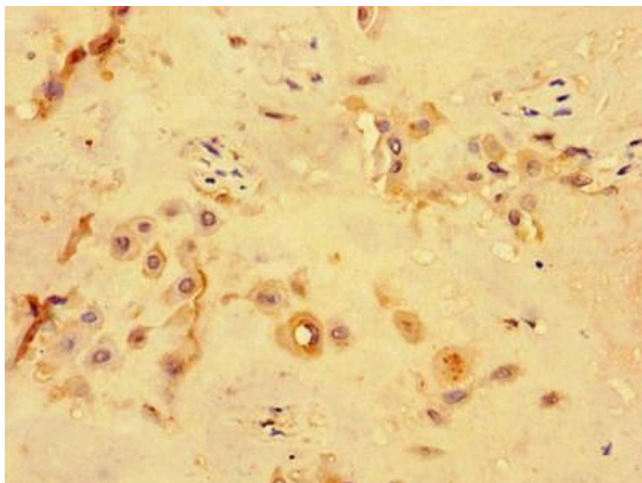
Storage Comment: Upon receipt, store at -20°C or -80°C. Avoid repeated freeze.

Images



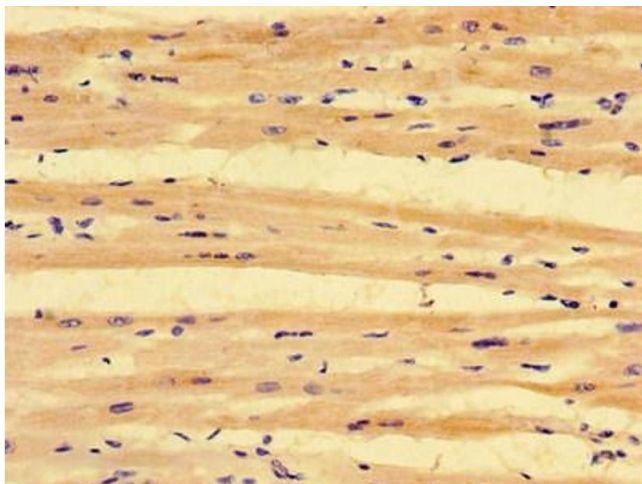
Immunofluorescence

Image 1. Immunofluorescent analysis of A549 cells using ABIN7163828 at dilution of 1:100 and Alexa Fluor 488-conjugated AffiniPure Goat Anti-Rabbit IgG(H+L)



Immunohistochemistry

Image 2. Immunohistochemistry of paraffin-embedded human placenta tissue using ABIN7163828 at dilution of 1:100



Immunohistochemistry

Image 3. Immunohistochemistry of paraffin-embedded human heart tissue using ABIN7163828 at dilution of 1:100