

Datasheet for ABIN7163844
anti-PHC1 antibody (AA 142-225)[Go to Product page](#)

1 Image

Overview

Quantity:	100 µg
Target:	PHC1
Binding Specificity:	AA 142-225
Reactivity:	Human
Host:	Rabbit
Clonality:	Polyclonal
Conjugate:	This PHC1 antibody is un-conjugated
Application:	ELISA, Immunohistochemistry (IHC)

Product Details

Immunogen:	Recombinant Human Polyhomeotic-like protein 1 protein (142-225AA)
Isotype:	IgG
Cross-Reactivity:	Human
Purification:	>95%, Protein G purified

Target Details

Target:	PHC1
Alternative Name:	PHC1 (PHC1 Products)
Background:	Background: Component of a Polycomb group (PcG) multiprotein PRC1-like complex, a complex class required to maintain the transcriptionally repressive state of many genes,

Target Details

including Hox genes, throughout development. PcG PRC1 complex acts via chromatin remodeling and modification of histones, it mediates monoubiquitination of histone H2A 'Lys-119', rendering chromatin heritably changed in its expressibility. Required for proper control of cellular levels of GMNN expression.

Aliases: Early development regulatory protein 1 antibody, hPH1 antibody, mPH1 antibody, PH1 antibody, Phc1 antibody, PHC1_HUMAN antibody, Polyhomeotic-like protein 1 antibody, Rae28 antibody

UniProt: [P78364](#)

Application Details

Application Notes: Recommended dilution: IHC:1:20-1:200,

Restrictions: For Research Use only

Handling

Format: Liquid

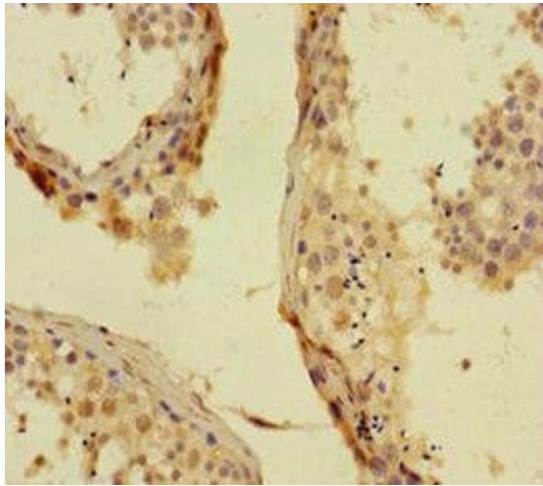
Buffer: Preservative: 0.03 % Proclin 300
Constituents: 50 % Glycerol, 0.01M PBS, PH 7.4

Preservative: ProClin

Precaution of Use: This product contains ProClin: a POISONOUS AND HAZARDOUS SUBSTANCE which should be handled by trained staff only.

Storage: -20 °C, -80 °C

Storage Comment: Upon receipt, store at -20°C or -80°C. Avoid repeated freeze.



Immunohistochemistry

Image 1. Immunohistochemistry of paraffin-embedded human testis tissue using ABIN7163844 at dilution of 1:100