



[Go to Product page](#)

Datasheet for ABIN7163899
anti-POPDC3 antibody (AA 130-291)

1 Image

Overview

Quantity:	100 µg
Target:	POPDC3
Binding Specificity:	AA 130-291
Reactivity:	Human
Host:	Rabbit
Clonality:	Polyclonal
Conjugate:	This POPDC3 antibody is un-conjugated
Application:	ELISA, Immunofluorescence (IF)

Product Details

Immunogen:	Recombinant Human Popeye domain-containing protein 3 protein (130-291AA)
Isotype:	IgG
Cross-Reactivity:	Human
Purification:	>95%, Protein G purified

Target Details

Target:	POPDC3
Alternative Name:	POPDC3 (POPDC3 Products)
Background:	Background: May play a role in the maintenance of heart function mediated, at least in part, through cAMP-binding.

Target Details

Aliases: bA355M14.1 antibody, POP3 antibody, POPD3 antibody, POPD3_HUMAN antibody, POPDC3 antibody, Popeye domain containing 3 antibody, Popeye domain containing protein 3 antibody, Popeye domain-containing protein 3 antibody, Popeye protein 3 antibody, RP11-99L11.2 antibody

UniProt: [Q9HBV1](#)

Application Details

Application Notes: Recommended dilution: IF:1:200-1:500,

Restrictions: For Research Use only

Handling

Format: Liquid

Buffer: Preservative: 0.03 % Proclin 300
Constituents: 50 % Glycerol, 0.01M PBS, pH 7.4

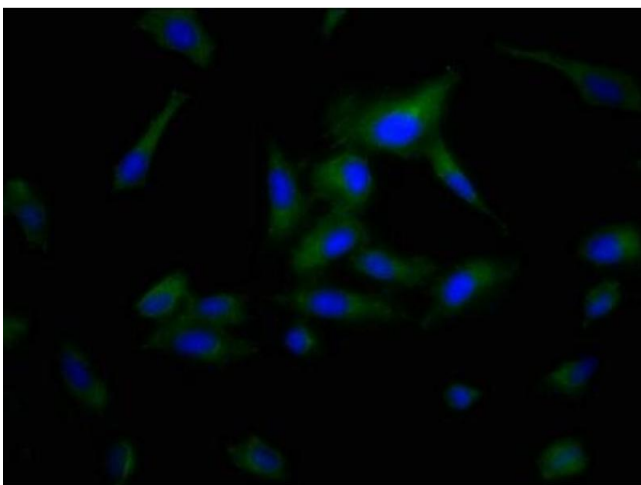
Preservative: ProClin

Precaution of Use: This product contains ProClin: a POISONOUS AND HAZARDOUS SUBSTANCE which should be handled by trained staff only.

Storage: -20 °C,-80 °C

Storage Comment: Upon receipt, store at -20°C or -80°C. Avoid repeated freeze.

Images



Immunofluorescence

Image 1. Immunofluorescence staining of HeLa cells with ABIN7163899 at 1:200, counter-stained with DAPI. The cells were fixed in 4% formaldehyde, permeabilized using 0.2% Triton X-100 and blocked in 10% normal Goat Serum. The cells were then incubated with the antibody overnight at 4°C. The secondary antibody was Alexa Fluor 488-conjugated AffiniPure Goat Anti-Rabbit IgG(H+L).