



[Go to Product page](#)

Datasheet for ABIN7163908
anti-Pgap2 antibody (AA 45-114)

3 Images

Overview

Quantity:	100 µg
Target:	Pgap2
Binding Specificity:	AA 45-114
Reactivity:	Human
Host:	Rabbit
Clonality:	Polyclonal
Conjugate:	This Pgap2 antibody is un-conjugated
Application:	ELISA, Immunohistochemistry (IHC), Immunofluorescence (IF)

Product Details

Immunogen:	Recombinant Human Post-GPI attachment to proteins factor 2 protein (45-114AA)
Isotype:	IgG
Cross-Reactivity:	Human
Purification:	>95%, Protein G purified

Target Details

Target:	Pgap2
Alternative Name:	PGAP2 (Pgap2 Products)
Background:	Background: Involved in the lipid remodeling steps of GPI-anchor maturation. Required for stable expression of GPI-anchored proteins at the cell surface (By similarity).

Target Details

Aliases: PGAP2 antibody, FRAG1 antibody, Post-GPI attachment to proteins factor 2 antibody, FGF receptor-activating protein 1 antibody

UniProt: [Q9UHH9](#)

Application Details

Application Notes: Recommended dilution: IHC:1:20-1:200, IF:1:50-1:200,

Restrictions: For Research Use only

Handling

Format: Liquid

Buffer: Preservative: 0.03 % Proclin 300
Constituents: 50 % Glycerol, 0.01M PBS, PH 7.4

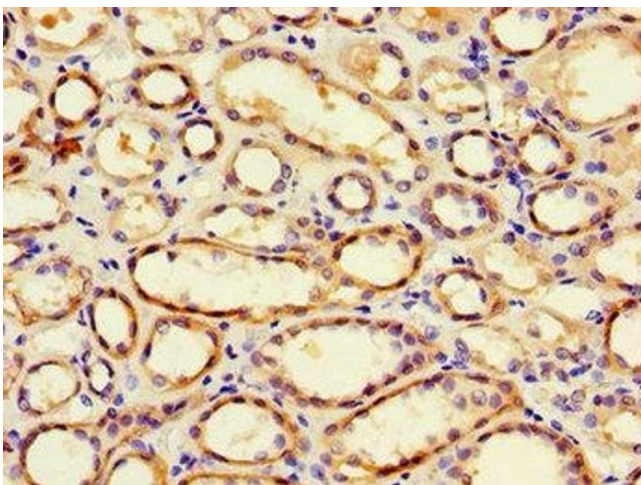
Preservative: ProClin

Precaution of Use: This product contains ProClin: a POISONOUS AND HAZARDOUS SUBSTANCE which should be handled by trained staff only.

Storage: -20 °C,-80 °C

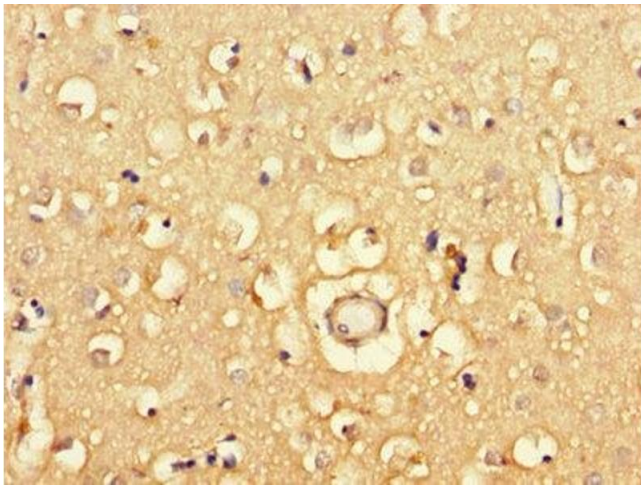
Storage Comment: Upon receipt, store at -20°C or -80°C. Avoid repeated freeze.

Images



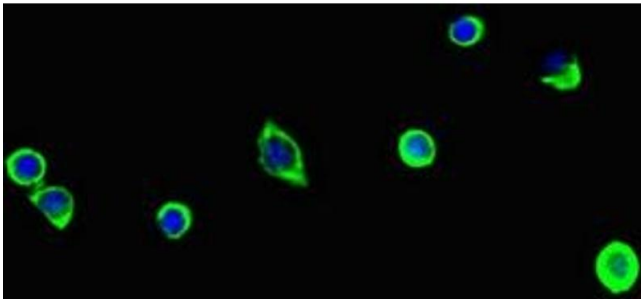
Immunohistochemistry

Image 1. Immunohistochemistry of paraffin-embedded human kidney tissue using ABIN7163908 at dilution of 1:100



Immunohistochemistry

Image 2. Immunohistochemistry of paraffin-embedded human brain tissue using ABIN7163908 at dilution of 1:100



Immunofluorescence

Image 3. Immunofluorescent analysis of MCF-7 cells using ABIN7163908 at dilution of 1:100 and Alexa Fluor 488-conjugated AffiniPure Goat Anti-Rabbit IgG(H+L)