

Datasheet for ABIN7163924
anti-KCNK15 antibody (AA 244-330)[Go to Product page](#)

1 Image

Overview

Quantity:	100 µL
Target:	KCNK15
Binding Specificity:	AA 244-330
Reactivity:	Human
Host:	Rabbit
Clonality:	Polyclonal
Conjugate:	This KCNK15 antibody is un-conjugated
Application:	ELISA, Immunofluorescence (IF)

Product Details

Immunogen:	Recombinant Human Potassium channel subfamily K member 15 protein (244-330AA)
Isotype:	IgG
Cross-Reactivity:	Human
Purification:	>95%, Antigen Affinity purified & Affinity purified

Target Details

Target:	KCNK15
Alternative Name:	KCNK15 (KCNK15 Products)
Background:	Background: Probable potassium channel subunit. No channel activity observed in heterologous systems. May need to associate with another protein to form a functional

Target Details

channel.

Aliases: KCNK15 antibody, TASK5 antibody, Potassium channel subfamily K member 15 antibody, Acid-sensitive potassium channel protein TASK-5 antibody, TWIK-related acid-sensitive K(+) channel 5 antibody, Two pore potassium channel KT3.3 antibody, Two pore K(+) channel KT3.3 antibody

UniProt: [Q9H427](#)

Application Details

Application Notes: Recommended dilution: IF:1:200-1:500,

Restrictions: For Research Use only

Handling

Format: Liquid

Buffer: Preservative: 0.03 % Proclin 300
Constituents: 50 % Glycerol, 0.01M PBS, pH 7.4

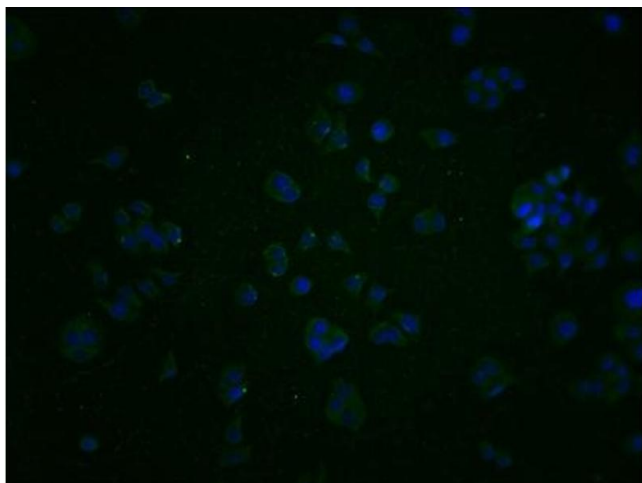
Preservative: ProClin

Precaution of Use: This product contains ProClin: a POISONOUS AND HAZARDOUS SUBSTANCE which should be handled by trained staff only.

Storage: -20 °C,-80 °C

Storage Comment: Upon receipt, store at -20°C or -80°C. Avoid repeated freeze.

Images



Immunofluorescence

Image 1. Immunofluorescence staining of PC3 cells with ABIN7163924 at 1:200, counter-stained with DAPI. The cells were fixed in 4 % formaldehyde and blocked in 10 % normal Goat Serum. The cells were then incubated with the antibody overnight at 4 °C. The secondary antibody was Alexa Fluor 488-conjugated AffiniPure Goat Anti-Rabbit IgG(H+L).