



[Go to Product page](#)

Datasheet for ABIN7163928  
**anti-KCNK16 antibody (AA 259-309)**

2 Images

Overview

Quantity:	100 µg
Target:	KCNK16
Binding Specificity:	AA 259-309
Reactivity:	Human
Host:	Rabbit
Clonality:	Polyclonal
Conjugate:	This KCNK16 antibody is un-conjugated
Application:	ELISA, Immunohistochemistry (IHC)

Product Details

Immunogen:	Recombinant Human Potassium channel subfamily K member 16 protein (259-309AA)
Isotype:	IgG
Cross-Reactivity:	Human
Purification:	>95%, Protein G purified

Target Details

Target:	KCNK16
Alternative Name:	KCNK16 ( <a href="#">KCNK16 Products</a> )
Background:	Background: Outward rectifying potassium channel. Produces rapidly activating and non-inactivating outward rectifier K(+) currents.

## Target Details

---

Aliases: 2P domain potassium channel Talk 1 antibody, 2P domain potassium channel Talk-1 antibody, KCNK16 antibody, KCNKG\_HUMAN antibody, pancreatic potassium channel Talk 1 antibody, potassium channel subfamily K member 16 antibody, Potassium channel subfamily K member 16 antibody, TALK 1 antibody, TALK-1 antibody, TALK1 antibody, TWIK related alkaline pH activated K(+) channel 1 antibody, TWIK-related alkaline pH -activated K(+) channel 1 antibody

UniProt: [Q96T55](#)

## Application Details

---

Application Notes: Recommended dilution: IHC:1:20-1:200,

Restrictions: For Research Use only

## Handling

---

Format: Liquid

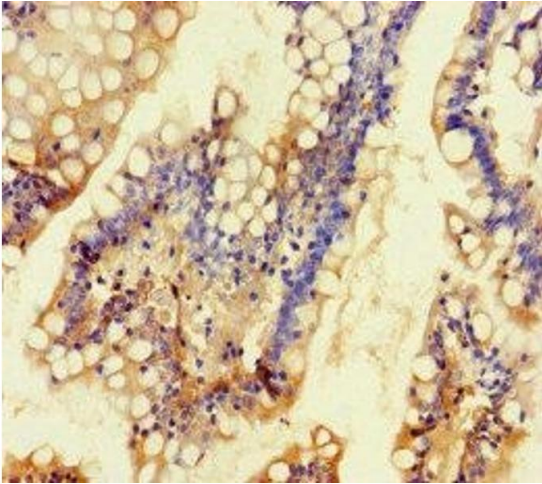
Buffer: Preservative: 0.03 % Proclin 300  
Constituents: 50 % Glycerol, 0.01M PBS, PH 7.4

Preservative: ProClin

Precaution of Use: This product contains ProClin: a POISONOUS AND HAZARDOUS SUBSTANCE which should be handled by trained staff only.

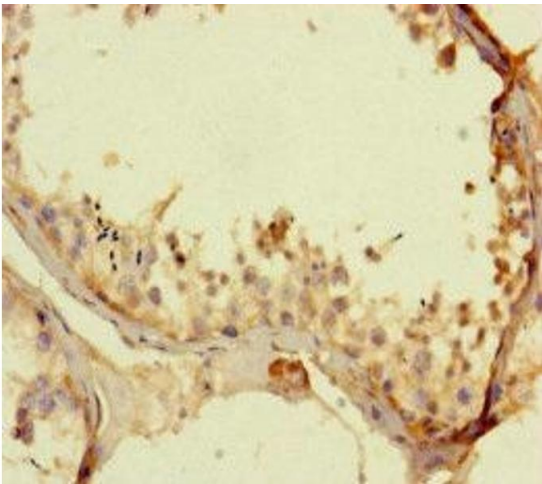
Storage: -20 °C,-80 °C

Storage Comment: Upon receipt, store at -20°C or -80°C. Avoid repeated freeze.



#### Immunohistochemistry

**Image 1.** Immunohistochemistry of paraffin-embedded human small intestine tissue using ABIN7163928 at dilution of 1:100



#### Immunohistochemistry

**Image 2.** Immunohistochemistry of paraffin-embedded human testis tissue using ABIN7163928 at dilution of 1:100